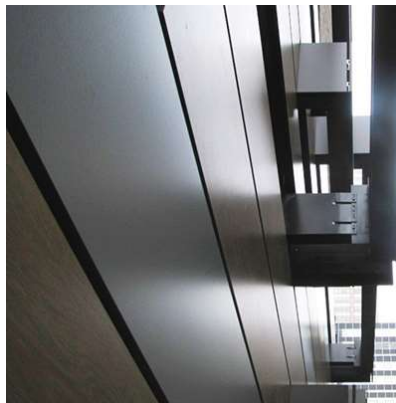


HPL RAINSCREEN

1221 Avenue of Americas

New York, NY



HPL panels and Plus5 attachment systems were married to create a unique facade on 1221 Avenue of the Americas. Various bracket sizes were used to achieve this 5,000 square foot wall.

System Type: Vci.10
Panel Type: HPL
Architect: Specter DeSouza Architects
Installer: Advance Carpentry Const.
Completed: 2009

888.826.8453

www.claddingcorp.com

CLADDING CORP

THE 1ST NAME IN RAINSCREEN

