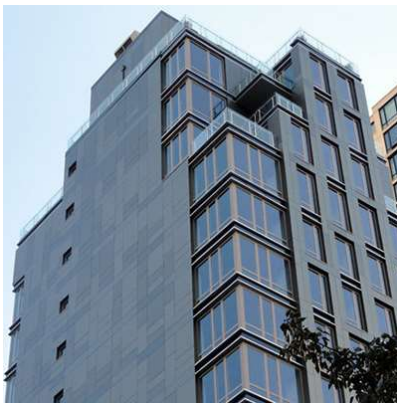


HPL RAINSCREEN

303 East 77th Street

New York, NY



Manhattan's Upper EastSide new luxury building called The Isis Condominiums was designed by FXFowle. The 28,000 square foot HPL rainscreen used the Plus5 attachment system.

System Type: Vci.10
Panel Type: HPL
Architect: FXFOWLE – New York
Installer: Cardrona, Inc
Completed: 2009

888.826.8453

www.claddingcorp.com

CLADDING CORP

THE 1ST NAME IN RAINSCREEN

