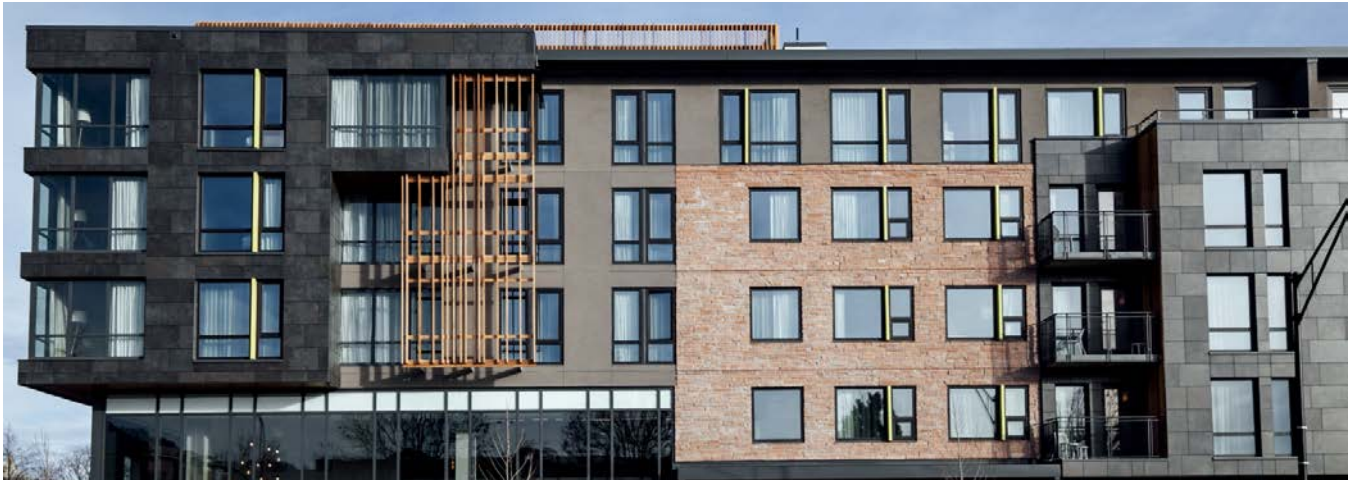


PORCELAIN CERAMIC RAINSCREEN

28th & Canyon Embassy Suites

Modern, Energy-efficient Rainscreen for Boulder's Newest Hotel



Boulder's happening Twenty Ninth Street added some awesome hotel options as [28th and Canyon Embassy Suites](#) has opened around the corner.

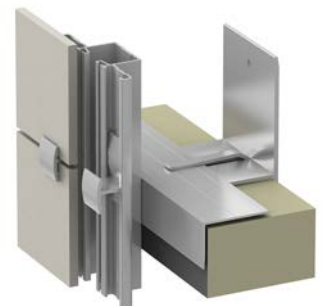
[Johnson Nathan Strohe Architects](#) (JNS) of Denver design work on the new Embassy Suites has added to Boulder's international appeal.

Incorporating a thermally efficient [Ceramic5](#) rainscreen, the firm selected a rugged ceramic stone veneer.

System Type: Alpha Hci.20

Panel Type: Ceramic5

Architect: Johnson Nathan Strohe Architects



888-826-8453

CLADDING CORP

THE 1ST NAME IN RAINSCREEN

082919