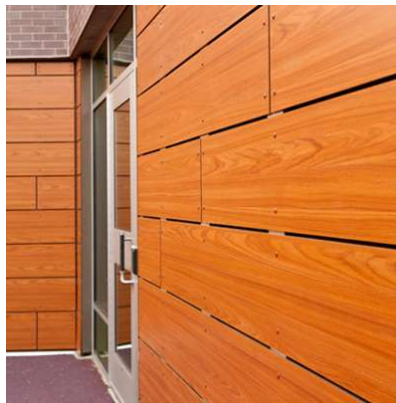


HPL RAINSCREEN

# Educare School

Washington, DC



RDG Planning and Design of Omaha designed a HPL rainscreen wall featuring Plus5 substructure. An exposed fixing system was used and the depth accommodated fiber insulation.

System Type: Vci.10  
Panel Type: HPL  
Architect: RDG Planning & Design  
Installer: Boatman & Magnani  
Completed: 2012

**888.826.8453**

[www.claddingcorp.com](http://www.claddingcorp.com)

**CLADDING CORP**

THE 1<sup>ST</sup> NAME IN RAINSCREEN

