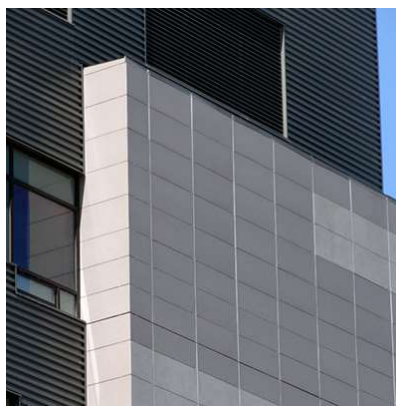


CERAMIC RAINSCREEN

Providence Park Hospital

Novi, MI



For this cutting-edge hospital project in Michigan, NBBJ Columbus selected a Ceramic5 rainscreen system along with wood laminate panels for the featured cladding on this facade.

System Type: Hci.20
Panel Type: Ceramic5
Architect: NBBJ - Columbus
Installer: Flynn Specialty Metals
Completed: 2008

888.826.8453

www.claddingcorp.com

CLADDING CORP

THE 1ST NAME IN RAINSCREEN

