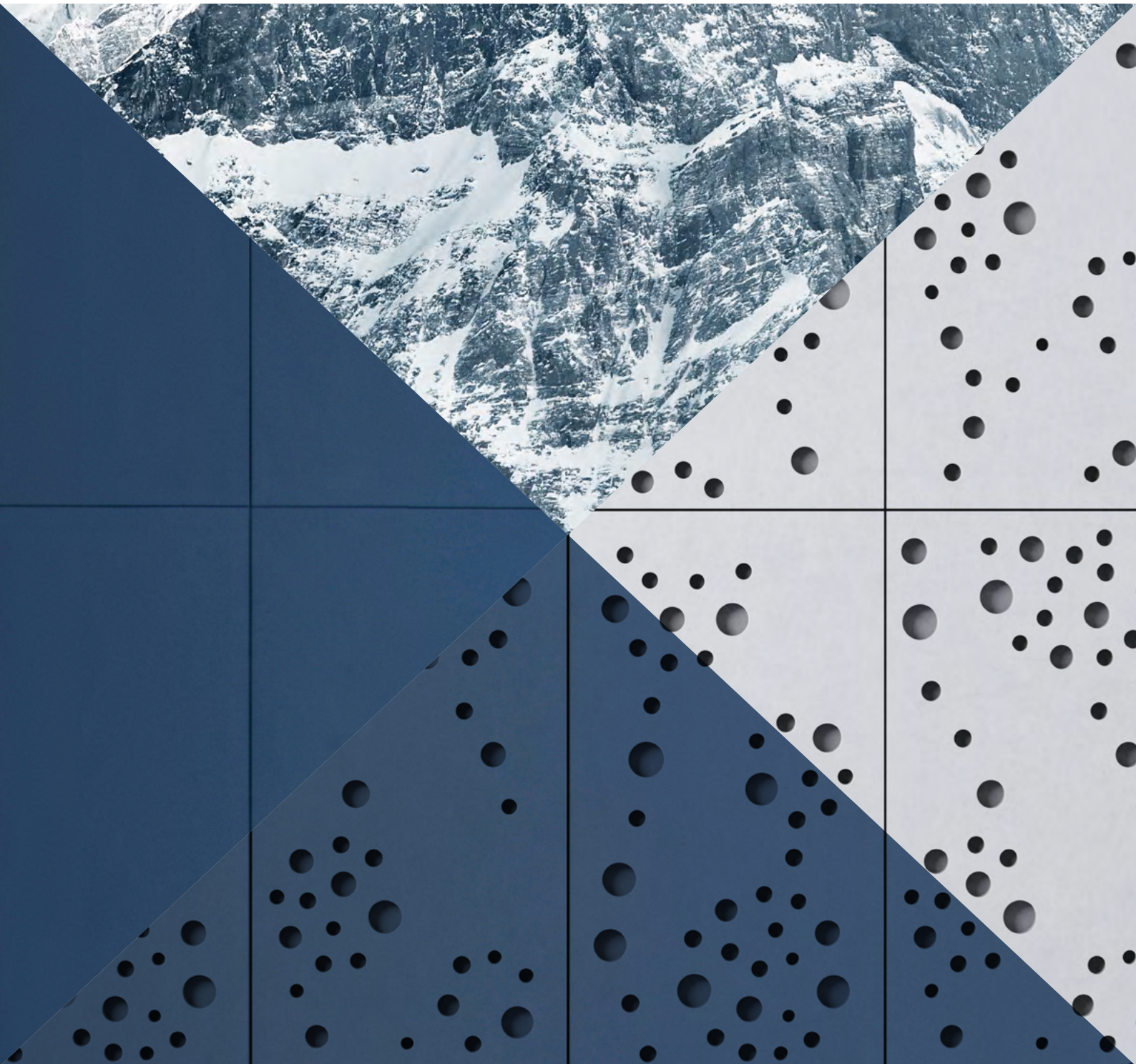


SWISSPEARL

# Facades





# PATINA ORIGINAL NXT

---

Natural, vibrant structures are created by a textured surface that develops a unique patina over time.

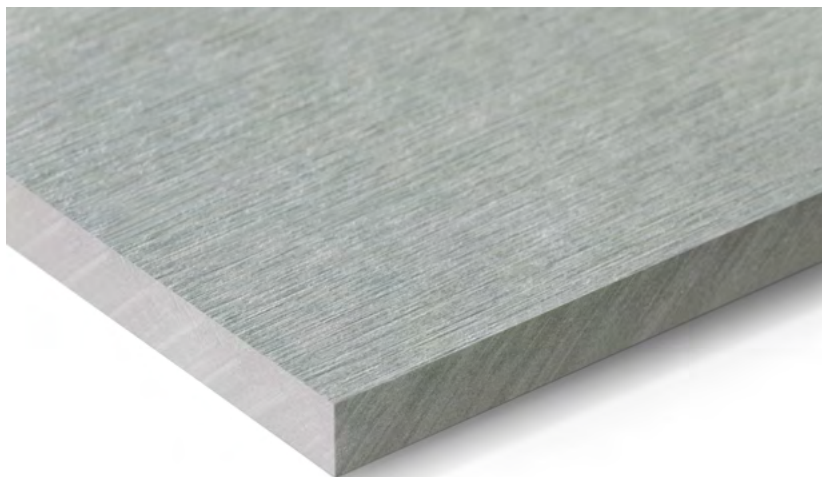






# PATINA ORIGINAL NXT

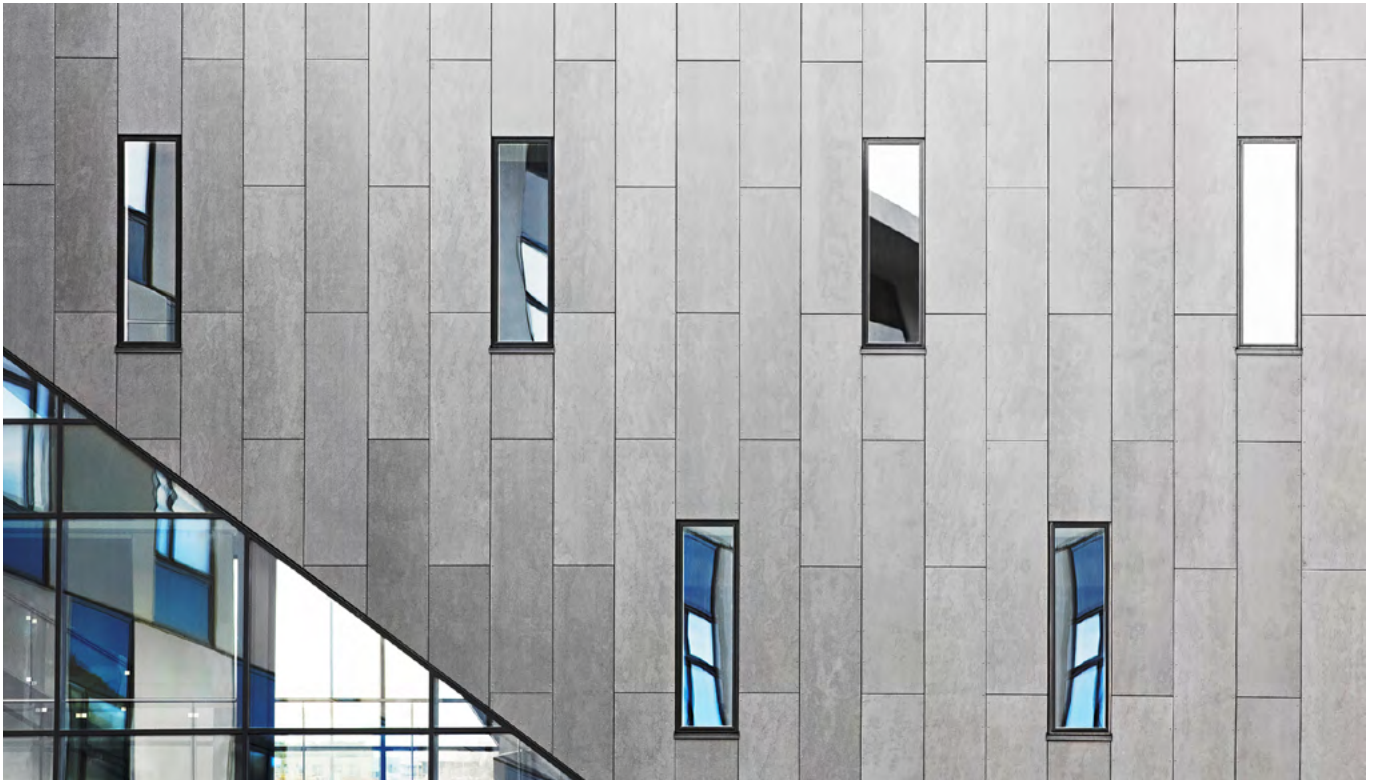
---



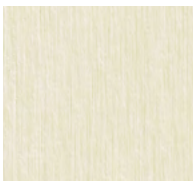
Patina Original NXT is a coloured fibre cement panel with a textured surface that stylishly showcases the character of the material. The texture emphasises the fibres and the characterful properties of the raw materials. As the seasons change, a subtle patina is created that tells the story of the building and brings its facade to life.

As the panel develops a beautiful patina over time, it gives the building a unique, aesthetic appearance with small, subtle variations in the surface.

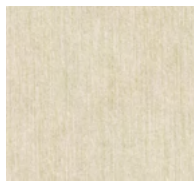
Due to the slight sanding, it is important to ensure that Patina Original NXT panels are installed in the correct direction.



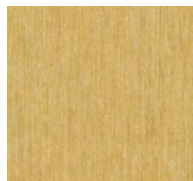
Visionshuset, Ålborg, Denmark. Architect: KPF arkitekter, Ålborg, Denmark. Builder: C.W. Obel Ejendomme A/S, Ålborg, Denmark.  
(1st generation Patina)



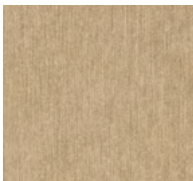
P 222



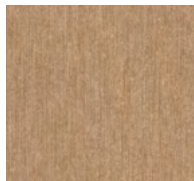
P 545



P 565



P 313



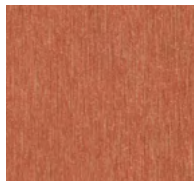
P 333



P 626



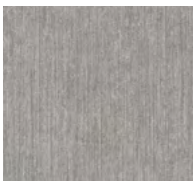
P 323



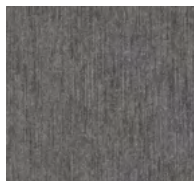
P 343



P 020



P 045



P 070

## Technical data

### Panels

The panel is through coloured and very finely ground on the visible side. This preserves the structure of the fibre cement and creates a deliberately vibrant character. The panel surfaces are hydrophobized on all sides.

### Panel format

#### Swisspearl Largo:

Maximum usable format 3050 x 1250 mm,  
panel thickness 8 mm

For a detailed summary of the sizing and colour options, please refer to our delivery program.

### Colours

11 standard colours.

Deviations in the colour shades of the different panels are a natural part of the production properties underlining the vibrant character of the material.

### Mounting

#### Visible on wooden substructure:

Screws with painted heads

#### Visible on metal substructure

(aluminium or steel):

Blind rivets with painted heads

### Technical data

Detailed information can be found in the DIM – “Design and Installation Manual”.



# PATINA INLINE NXT

---

Light and shadow in the rhythm  
of time. Linear milled indentations  
create a dynamic appearance.







# PATINA INLINE NXT

---



Patina Inline NXT is a through coloured fibre cement panel with a linear milled surface structure. The indentations create an atmospheric play of shadows, which changes depending on the time of day and viewing angle. A fine patina will form on the surface over time.

The restrained colours, which range from white to beige to a dark grey, create a stylish harmony in combination with the milled surface.

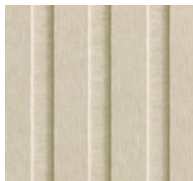




Långsjöskolan Huddinge, Segeltorp, Sweden. Architect: Tyréns, Sweden and Arkitema Architects, Denmark. Photographer: Barabild Sverige AB, Stockholm, Sweden. (1st generation Patina)



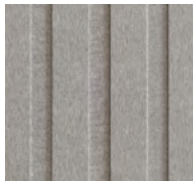
P 222



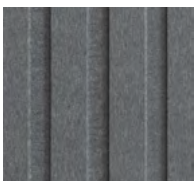
P 545



P 020



P 045



P 070

## Technical data

### Panels

The panel is coloured through with linear milled structural grooves. This gives the building a unique 3D effect and a dynamic appearance. The panel surfaces are hydrophobized on all sides.

### Panel format

#### Swisspearl Largo:

Maximum usable format 3050 x 1250 mm, panel thickness 9,5 / 8 mm

For a detailed summary of the sizing and colour options, please refer to our delivery program.

### Colours

5 standard colours.

Deviations in the colour shades of the different panels are a natural part of the production properties underlining the vibrant character of the material.

### Mounting

**Visible on wooden substructure:**

Screws with painted heads

**Visible on metal substructure**

(aluminium or steel):

Blind rivets with painted heads

### Technical data

Detailed information can be found in the DIM – "Design and Installation Manual".



# PATINA ROUGH NXT

---

Unique, rough, versatile. The rough surface gives it a distinctive character.







# PATINA ROUGH NXT

---



Patina Rough NXT is a through coloured fibre cement panel that creates a varied appearance due to its rough, sandblasted surface. Subtle variations in colour and texture make each panel unique. Like all variants of the Patina NXT series, Patina Rough NXT forms a fine coating over the years, which gives the facade an individual character.

The exquisite shades support the rough surface in its expressiveness and form a harmonious combination with the other Patina NXT products.





Vigtil Terrasse, Trondheim, Norway. Architect: Per Knudsen Arkitekter, Trondheim, Norway.  
 Photographer: Kristoffer Wittrup, Atelier IISVika, Trondheim, Norway.  
 (1st generation Patina)

## Technical data

### Panels

The panel is through coloured and has a velvety, textured surface on the visible side. The panel surfaces are hydrophobized on all sides. Their appearance is reminiscent of natural materials, such as naturally aged sandstone.

### Panel format

#### Swisspearl Largo:

Maximum usable format 3050 x 1250 mm,  
 panel thickness 8 mm

For a detailed summary of the sizing and colour options, please refer to our delivery program.

### Colours

5 standard colours.

Deviations in the colour shades of the different panels are a natural part of the production properties underlining the vibrant character of the material.

### Mounting

#### Visible on wooden substructure:

Screws with painted heads

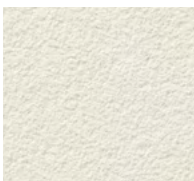
#### Visible on metal substructure

(aluminium or steel):

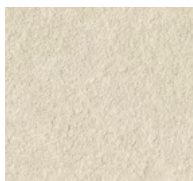
Blind rivets with painted heads

### Technical data

Detailed information can be found in the DIM – “Design and Installation Manual”.



P 222



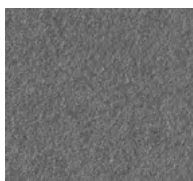
P 545



P 020



P 045



P 070



# PATINA STRUCTURE NXT

---

Structure created between shadow and light.  
Transforms fibre cement into a visual and  
tactile experience.

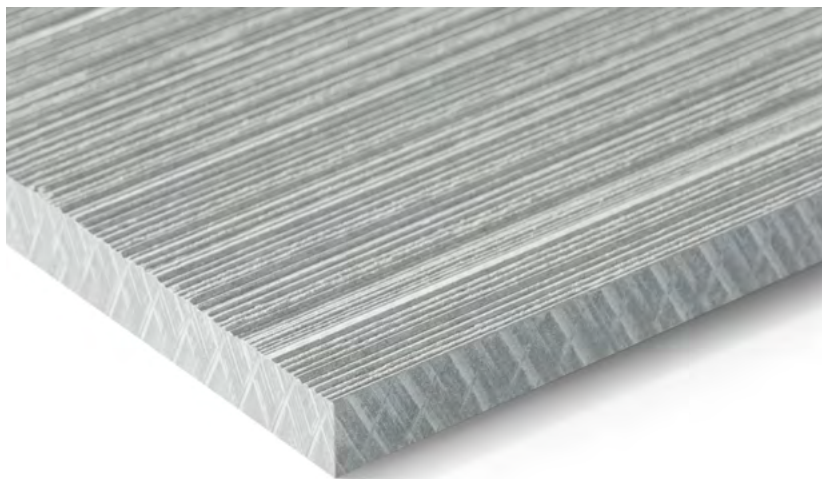






# PATINA STRUCTURE NXT

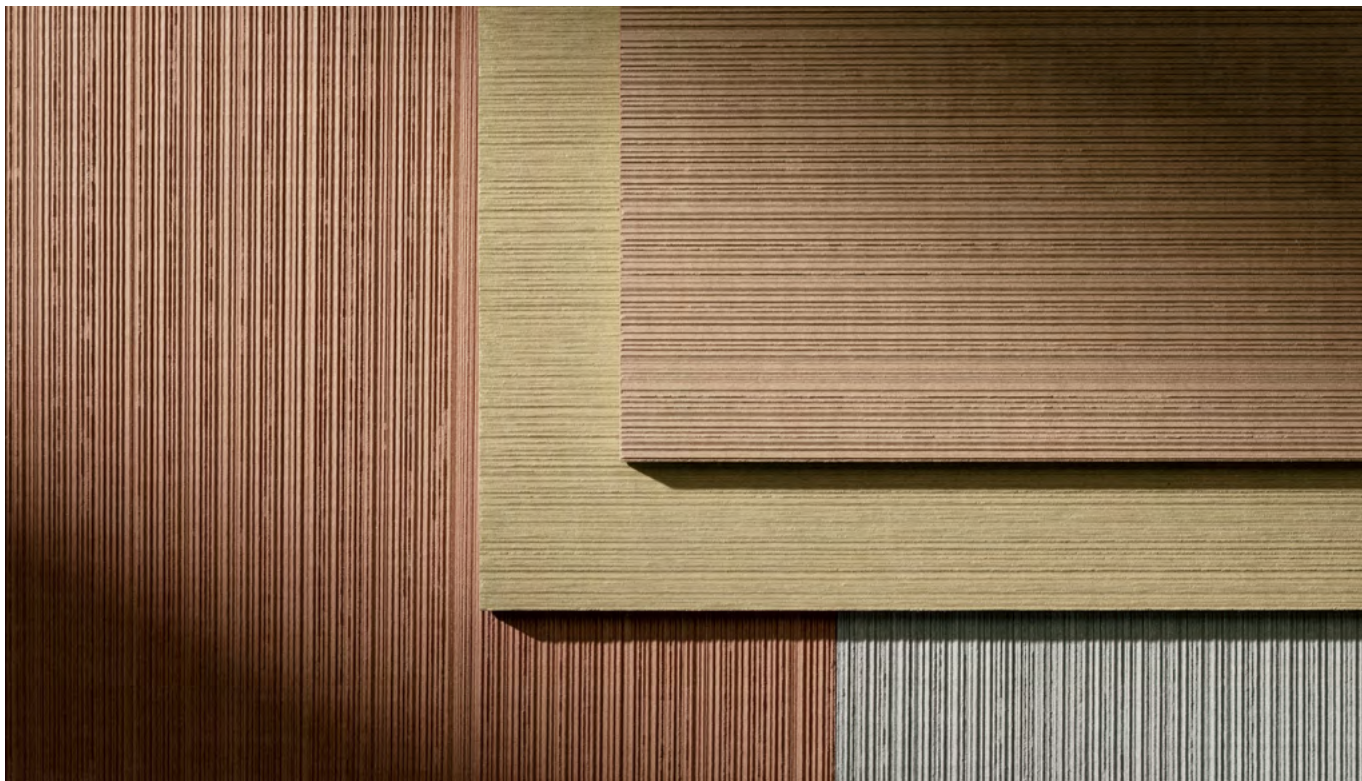
---



The surface of Patina Structure NXT reveals a refined, natural rhythm created by subtle linear grooves. As light grazes the material, fine and versatile shadows dance across the texture, enhancing the architectural depth of each panel. Each colour variation is enriched by the structured finish, offering a dynamic interplay of shadows with the course of daylight and perspective. The material conveys both strength and sophistication, combining a natural look with modern design sensibilities.

Patina Structure NXT transforms fibre cement into a visual and tactile experience, giving architects various aesthetic possibilities within the Patina NXT family.





Inspired by Meraner & Hauser OHG/SNC, Bolzano, Italy.

## Standard colours



P 222



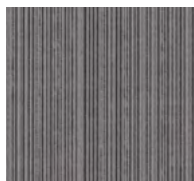
P 545



P 020



P 045



P 070

## Rare colours



P 313



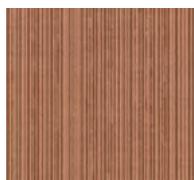
P 333



P 626



P 323



P 343



P 565

## Technical data

### Panels

The panel is through coloured and milled with a natural rhythm created by subtle linear grooves. The fine and versatile texture, enhancing the architectural depth of each panel. The surfaces on all sides are hydrophobized.

### Panel format

#### Swisspearl Largo:

Maximum usable format 3050 x 1250 mm, panel thickness 8 mm.

For a detailed summary of the sizing and colour options, please refer to our delivery program.

### Colours

5 standard colours and 6 rare colours. Deviations in the colour shades of the different panels are a natural part of the production properties underlining the vibrant character of the material.

### Mounting

#### Visible on wooden substructure:

Screws with painted heads

#### Visible on metal substructure

(aluminium or steel):

Blind rivets with painted heads

### Technical data

Detailed information can be found in the DIM – “Design and Installation Manual”.





[swisspearl.com](https://swisspearl.com)



(888)826-8453 | [claddingcorp.com](https://claddingcorp.com)