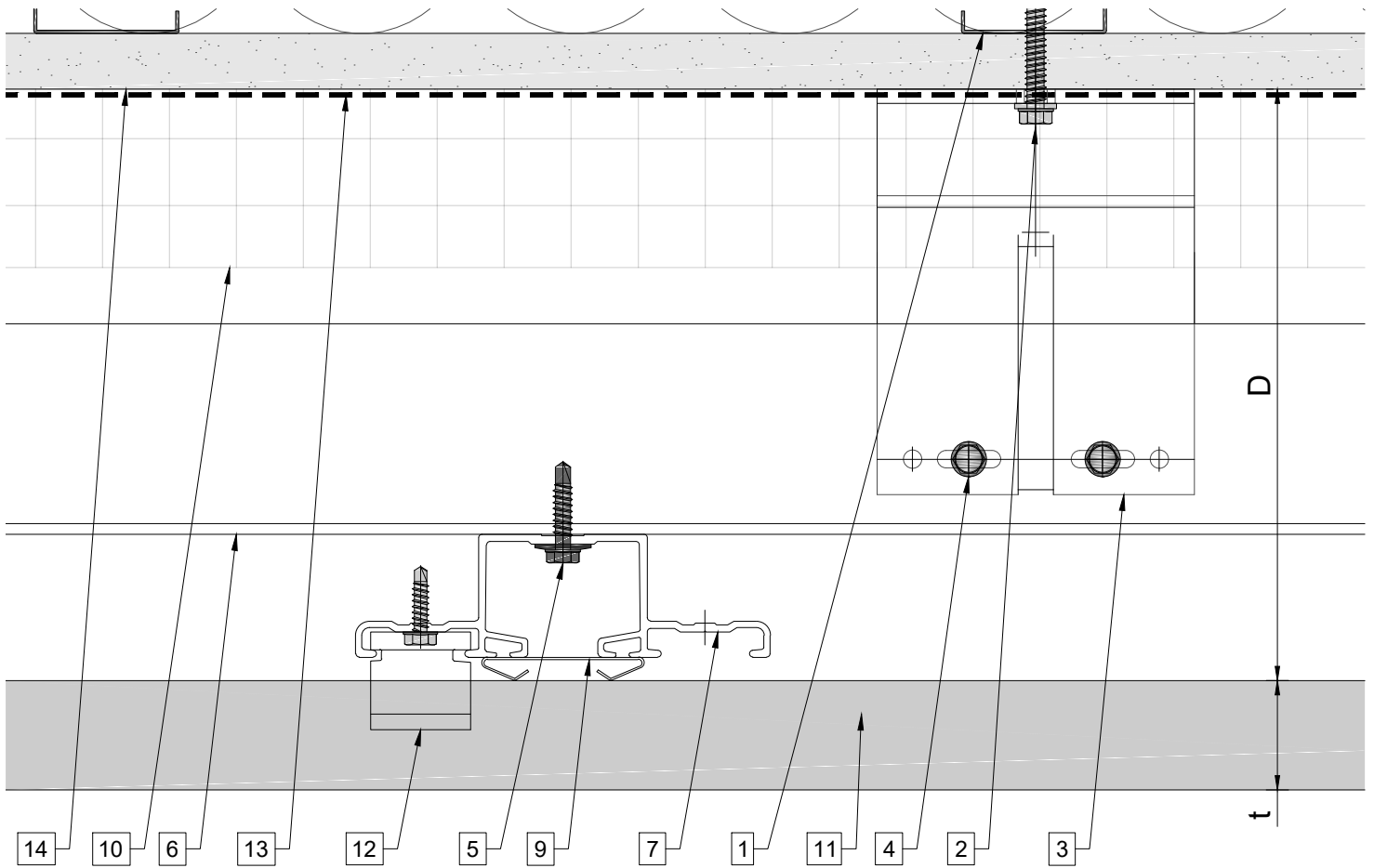


System depth

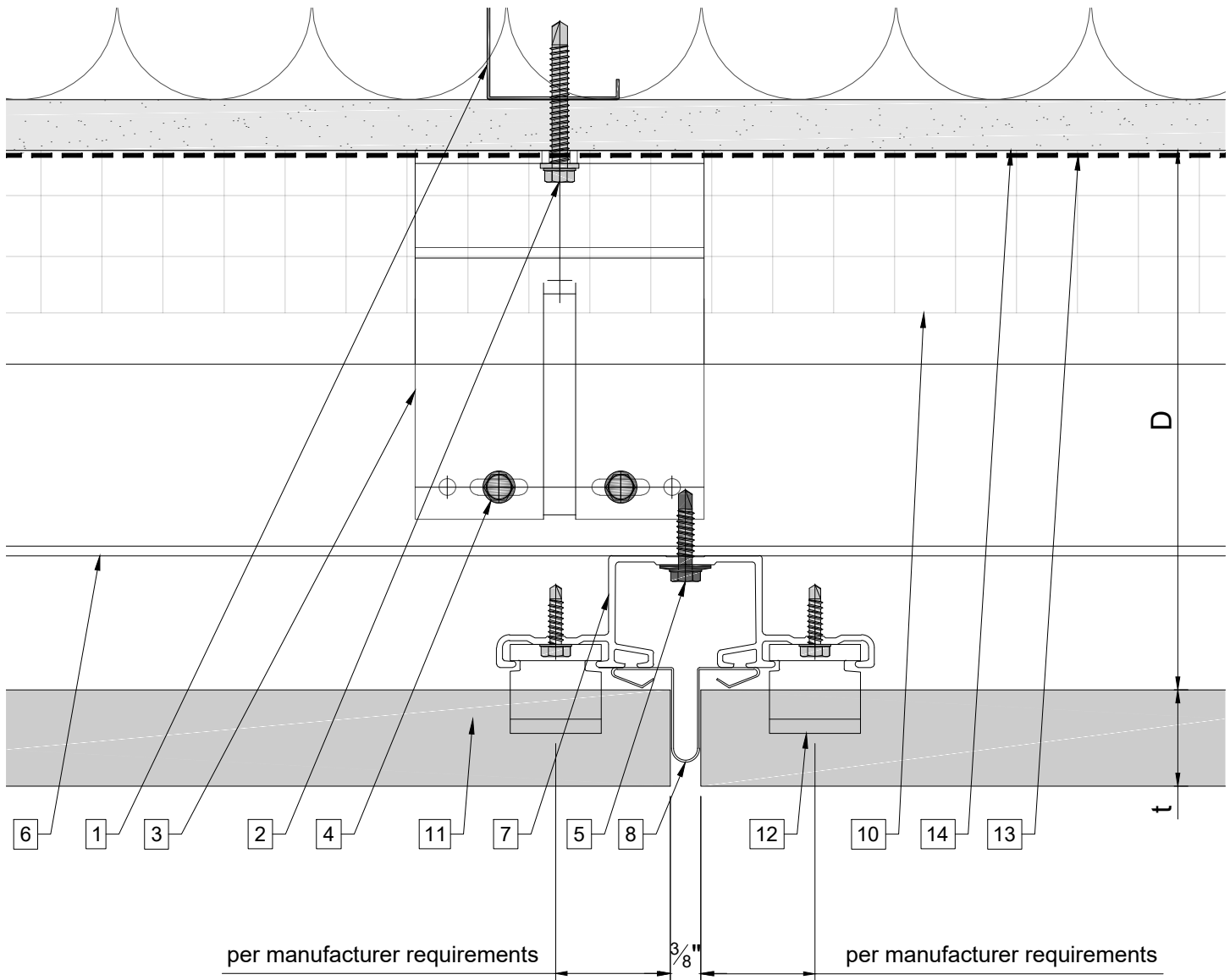


System depth			
Bracket	min. D system depth	max. D system depth	t panel thickness
Alpha H 035	4 $\frac{1}{4}$ " (108mm)	5 $\frac{5}{16}$ " (135mm)	varies
Alpha H 050	5" (127mm)	6 $\frac{5}{16}$ " (160mm)	varies
Alpha H 080	6" (153mm)	7 $\frac{1}{2}$ " (191mm)	varies
Alpha H 115	7 $\frac{7}{16}$ " (189mm)	8 $\frac{7}{8}$ " (226mm)	varies
Alpha H 150	8 $\frac{13}{16}$ " (224mm)	10 $\frac{1}{4}$ " (261mm)	varies
Alpha H 185	10 $\frac{3}{16}$ " (259mm)	11 $\frac{11}{16}$ " (297mm)	varies
Alpha H 220	11 $\frac{9}{16}$ " (294mm)	13 $\frac{1}{16}$ " (332mm)	varies
Alpha H 235	12 $\frac{15}{16}$ " (329mm)	14 $\frac{7}{16}$ " (367mm)	varies

Legend

- | | | |
|---|--|--|
| <ul style="list-style-type: none"> 1. Steel stud (16 GA typical) 2. Perimeter anchor 3. Alpha H wall bracket 4. st/st self-drilling screw $\frac{3}{16}$"x$\frac{3}{4}$" 5. st/st self-drilling screw $\frac{1}{4}$"x1" 6. Horizontal L-profile 7. Vertical Omega-profile 8. Joint profile | <ul style="list-style-type: none"> 9. Press Profile / Piece 10. Insulation 11. Tile 12. Tile Clamp 13. A/V barrier 14. Exterior wall 15. Outer corner closure 16. Jamb closure | <ul style="list-style-type: none"> 17. Vertical L-profile 18. Coping 19. Perforated window head closure 20. Window sill 21. Perforated base closure <p>D - System depth
t - Panel thickness</p> |
|---|--|--|

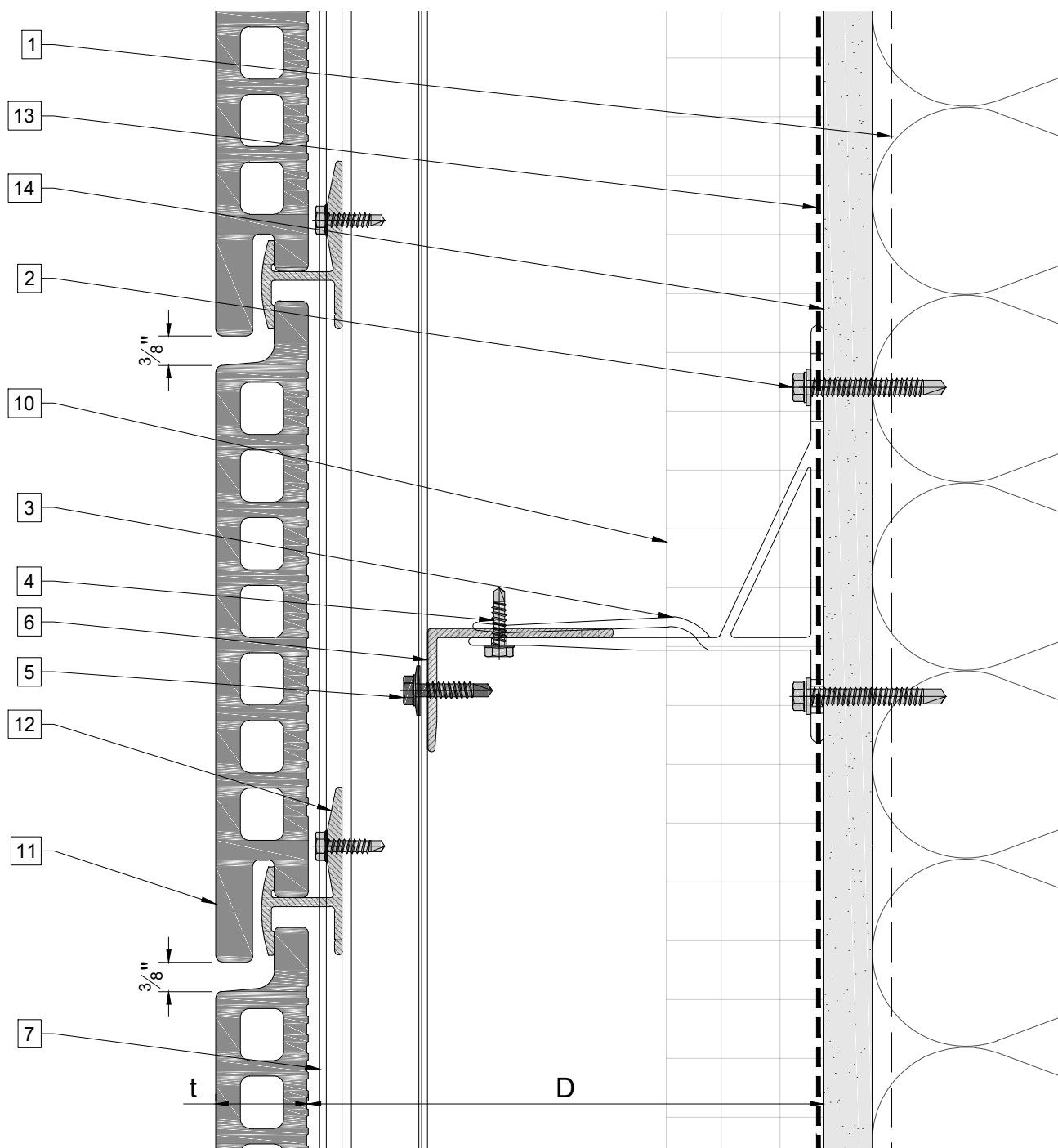
Vertical joint



Legend

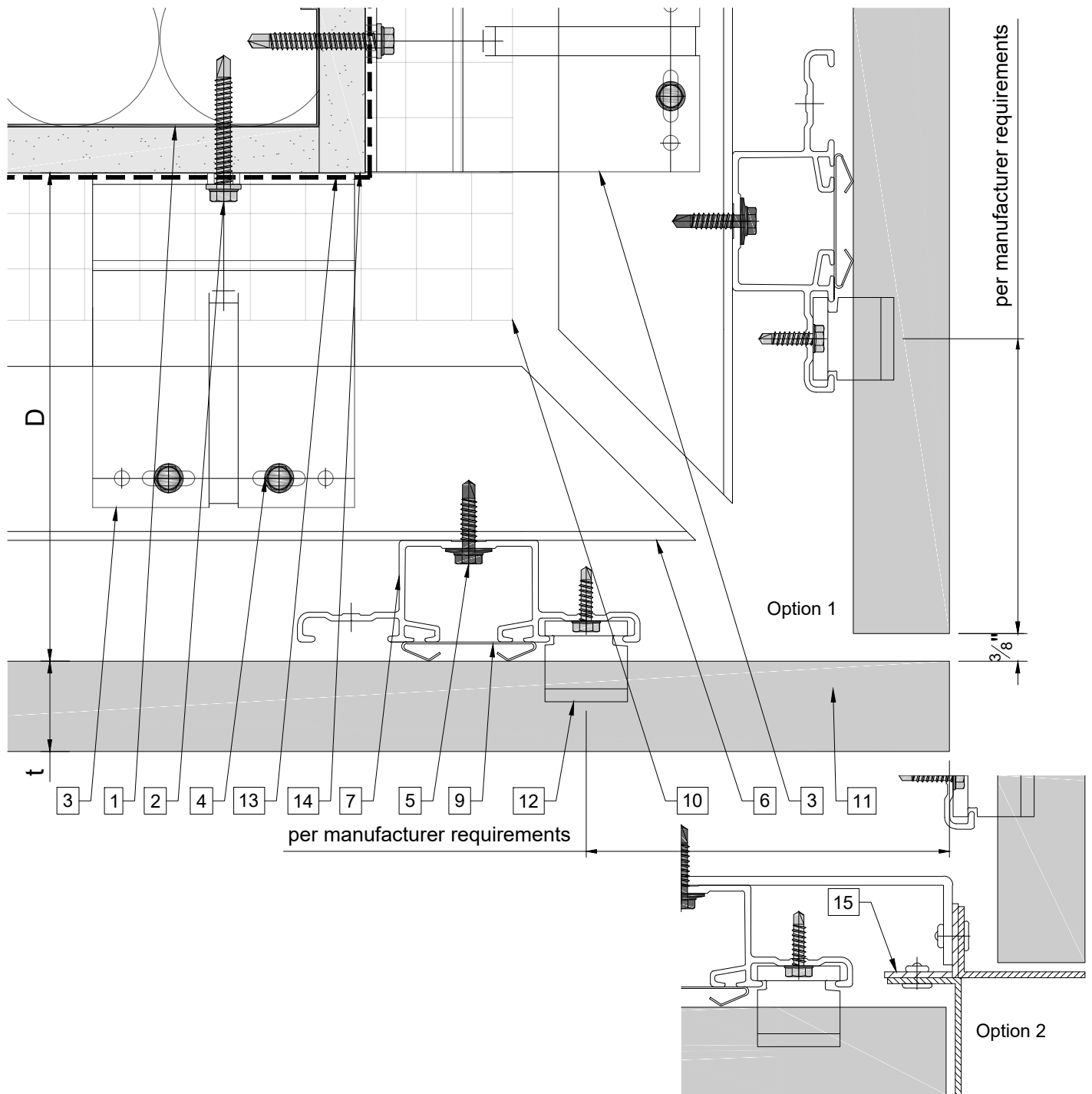
- | | | |
|--|--------------------------|------------------------------------|
| 1. Steel stud (16 GA typical) | 9. Press Profile / Piece | 17. Vertical L-profile |
| 2. Perimeter anchor | 10. Insulation | 18. Coping |
| 3. Alpha H wall bracket | 11. Tile | 19. Perforated window head closure |
| 4. st/st self-drilling screw $\frac{3}{16} \times \frac{3}{4}$ " | 12. Tile Clamp | 20. Window sill |
| 5. st/st self-drilling screw $\frac{1}{4} \times 1$ " | 13. A/V barrier | 21. Perforated base closure |
| 6. Horizontal L-profile | 14. Exterior wall | |
| 7. Vertical Omega-profile | 15. Outer corner closure | D - System depth |
| 8. Joint profile | 16. Jamb closure | t - Panel thickness |

Horizontal joint



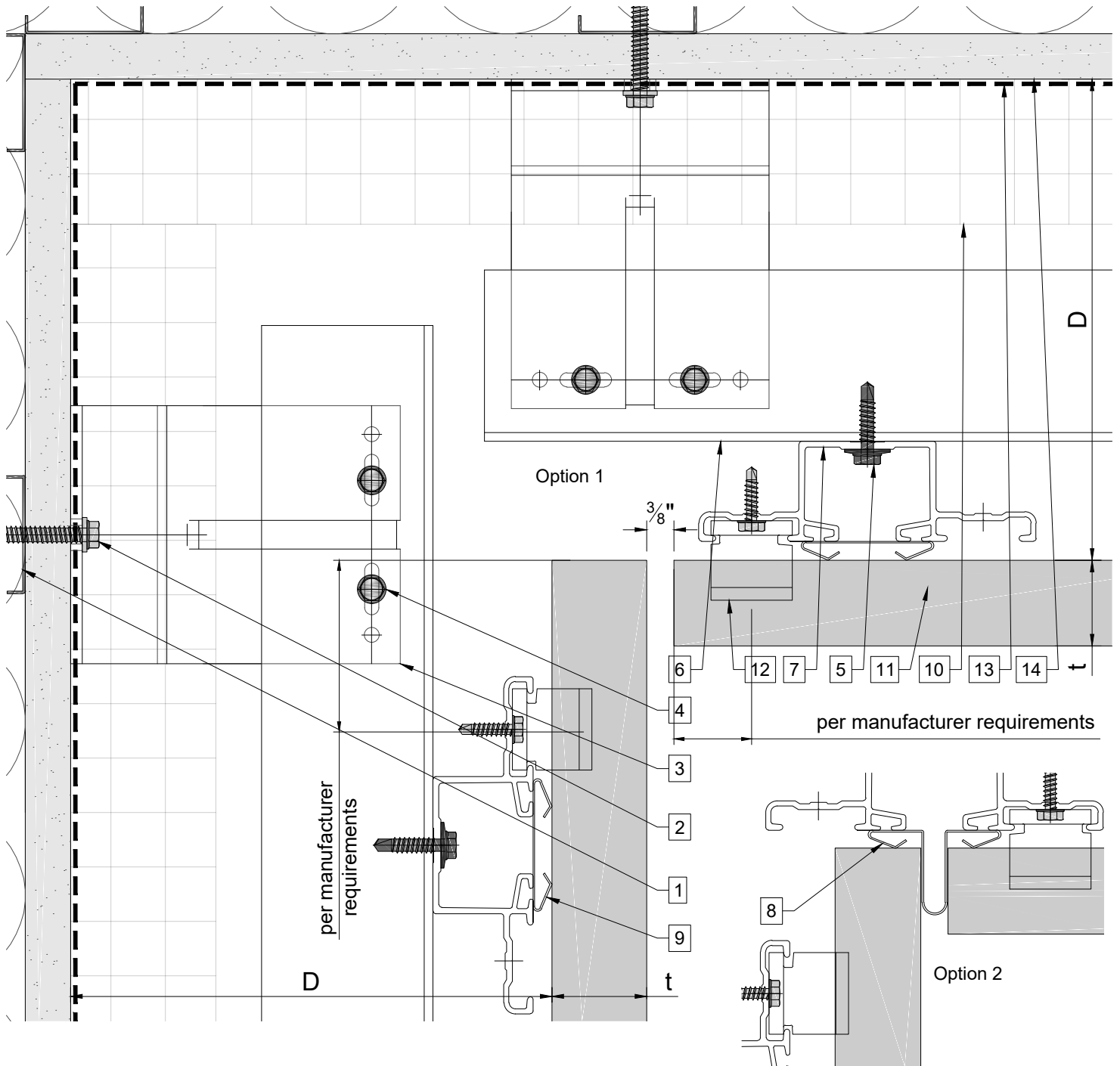
Legend

- | | | |
|--|--------------------------|------------------------------------|
| 1. Steel stud (16 GA typical) | 9. Press Profile / Piece | 17. Vertical L-profile |
| 2. Perimeter anchor | 10. Insulation | 18. Coping |
| 3. Alpha H wall bracket | 11. Tile | 19. Perforated window head closure |
| 4. st/st self-drilling screw $\frac{3}{16}'' \times \frac{3}{4}''$ | 12. Tile Clamp | 20. Window sill |
| 5. st/st self-drilling screw $\frac{1}{4}'' \times 1''$ | 13. A/V barrier | 21. Perforated base closure |
| 6. Horizontal L-profile | 14. Exterior wall | |
| 7. Vertical Omega-profile | 15. Outer corner closure | D - System depth |
| 8. Joint profile | 16. Jamb closure | t - Panel thickness |



Legend

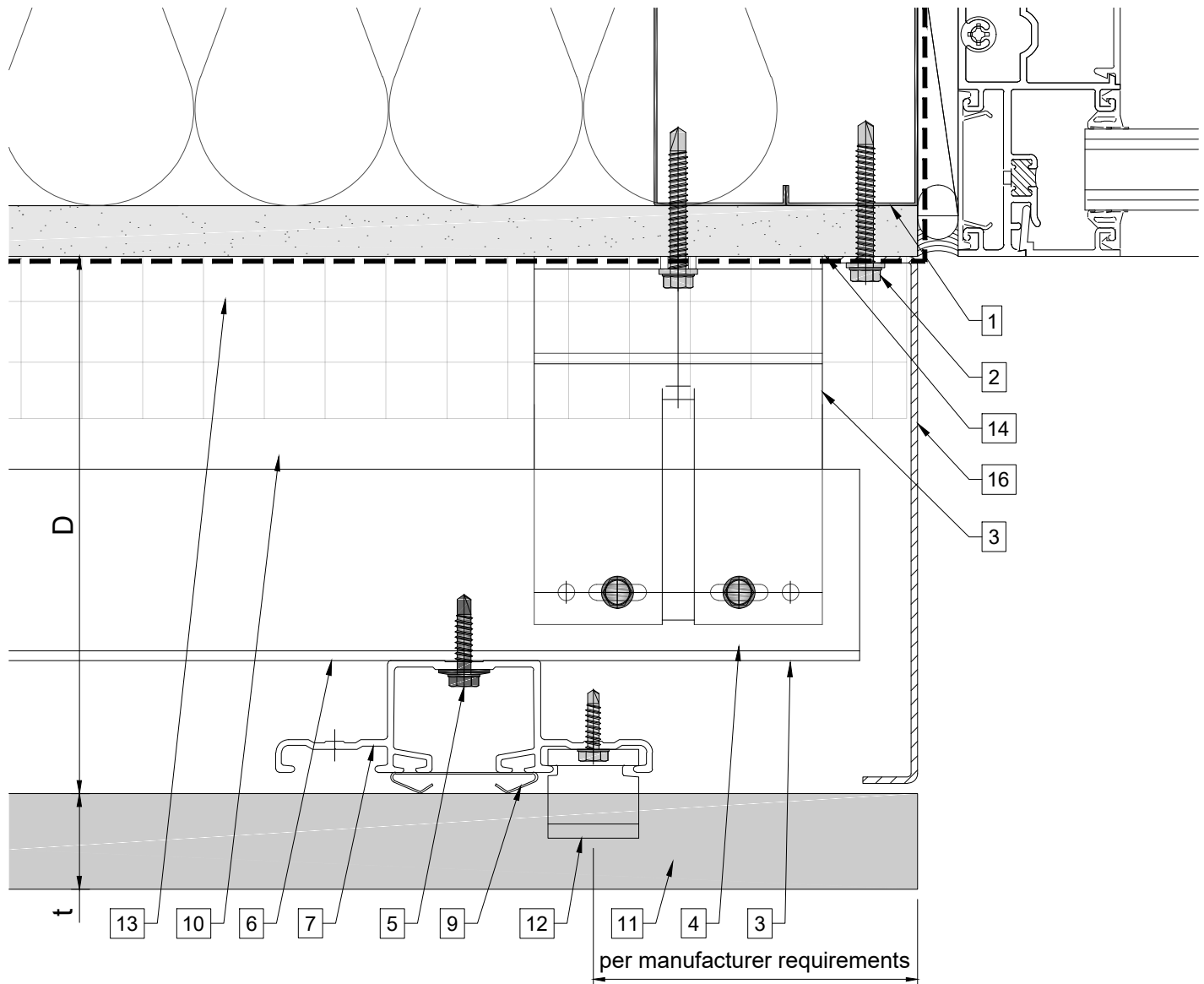
- | | | |
|--|--|--|
| <ul style="list-style-type: none"> 1. Steel stud (16 GA typical) 2. Perimeter anchor 3. Alpha H wall bracket 4. st/st self-drilling screw $\frac{3}{16}'' \times \frac{3}{4}''$ 5. st/st self-drilling screw $\frac{1}{4}'' \times 1''$ 6. Horizontal L-profile 7. Vertical Omega-profile 8. Joint profile | <ul style="list-style-type: none"> 9. Press Profile / Piece 10. Insulation 11. Tile 12. Tile Clamp 13. A/V barrier 14. Exterior wall 15. Outer corner closure 16. Jamb closure | <ul style="list-style-type: none"> 17. Vertical L-profile 18. Coping 19. Perforated window head closure 20. Window sill 21. Perforated base closure <p>D - System depth
t - Panel thickness</p> |
|--|--|--|



Legend

- | | | |
|--|--------------------------|------------------------------------|
| 1. Steel stud (16 GA typical) | 9. Press Profile / Piece | 17. Vertical L-profile |
| 2. Perimeter anchor | 10. Insulation | 18. Coping |
| 3. Alpha H wall bracket | 11. Tile | 19. Perforated window head closure |
| 4. st/st self-drilling screw $\frac{3}{16}'' \times \frac{3}{4}''$ | 12. Tile Clamp | 20. Window sill |
| 5. st/st self-drilling screw $\frac{1}{4}'' \times 1''$ | 13. A/V barrier | 21. Perforated base closure |
| 6. Horizontal L-profile | 14. Exterior wall | |
| 7. Vertical Omega-profile | 15. Outer corner closure | |
| 8. Joint profile | 16. Jamb closure | |
- D - System depth
t - Panel thickness

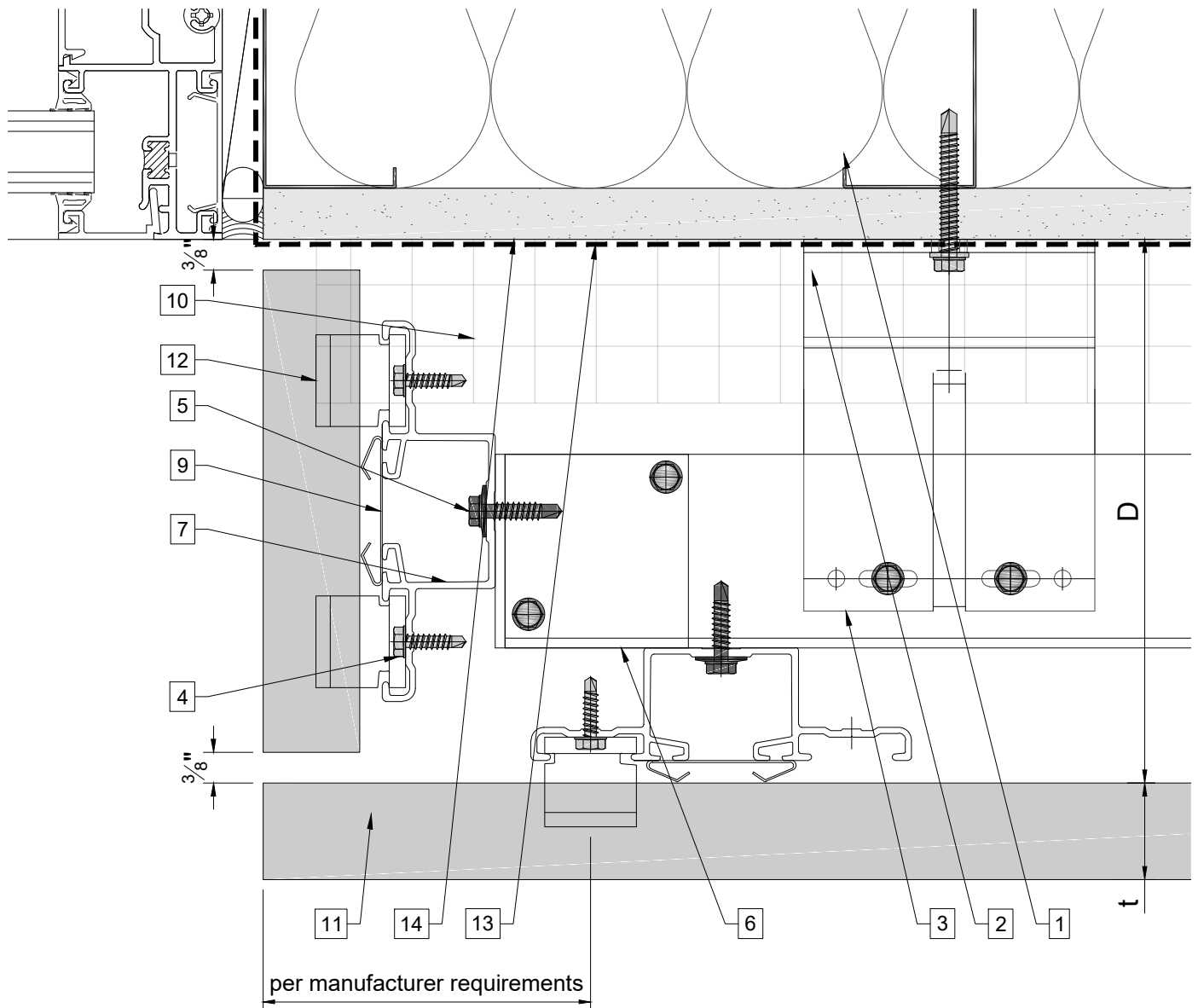
Window jamb (option 1)



Legend

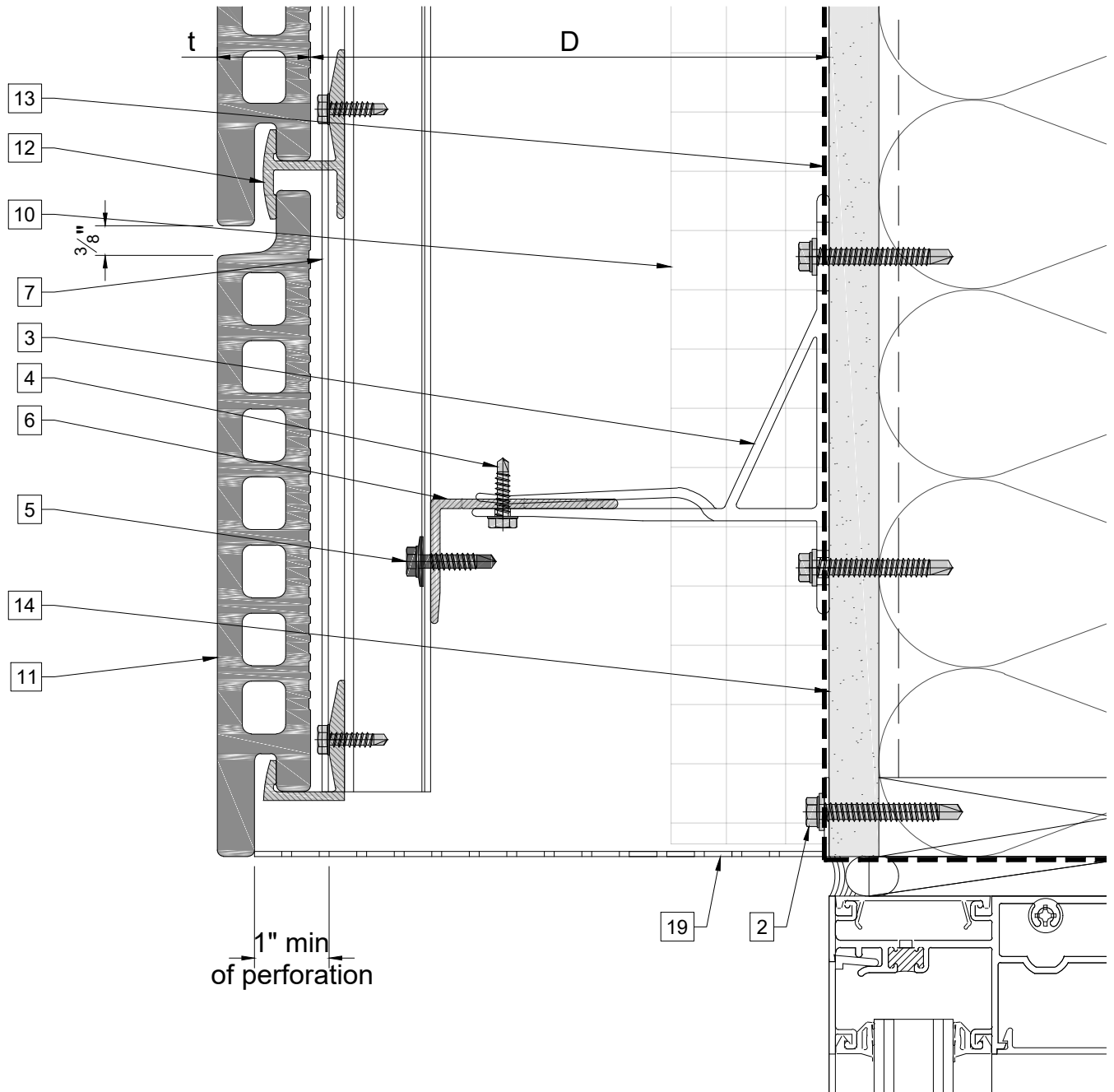
- | | | |
|--|--------------------------|---|
| 1. Steel stud (16 GA typical) | 9. Press Profile / Piece | 17. Vertical L-profile |
| 2. Perimeter anchor | 10. Insulation | 18. Coping |
| 3. Alpha H wall bracket | 11. Tile | 19. Perforated window head closure |
| 4. st/st self-drilling screw $\frac{3}{16}'' \times \frac{3}{4}''$ | 12. Tile Clamp | 20. Window sill |
| 5. st/st self-drilling screw $\frac{1}{4}'' \times 1''$ | 13. A/V barrier | 21. Perforated base closure |
| 6. Horizontal L-profile | 14. Exterior wall | |
| 7. Vertical Omega-profile | 15. Outer corner closure | |
| 8. Joint profile | 16. Jamb closure | |
| | | D - System depth
t - Panel thickness |

Window jamb (option 2)



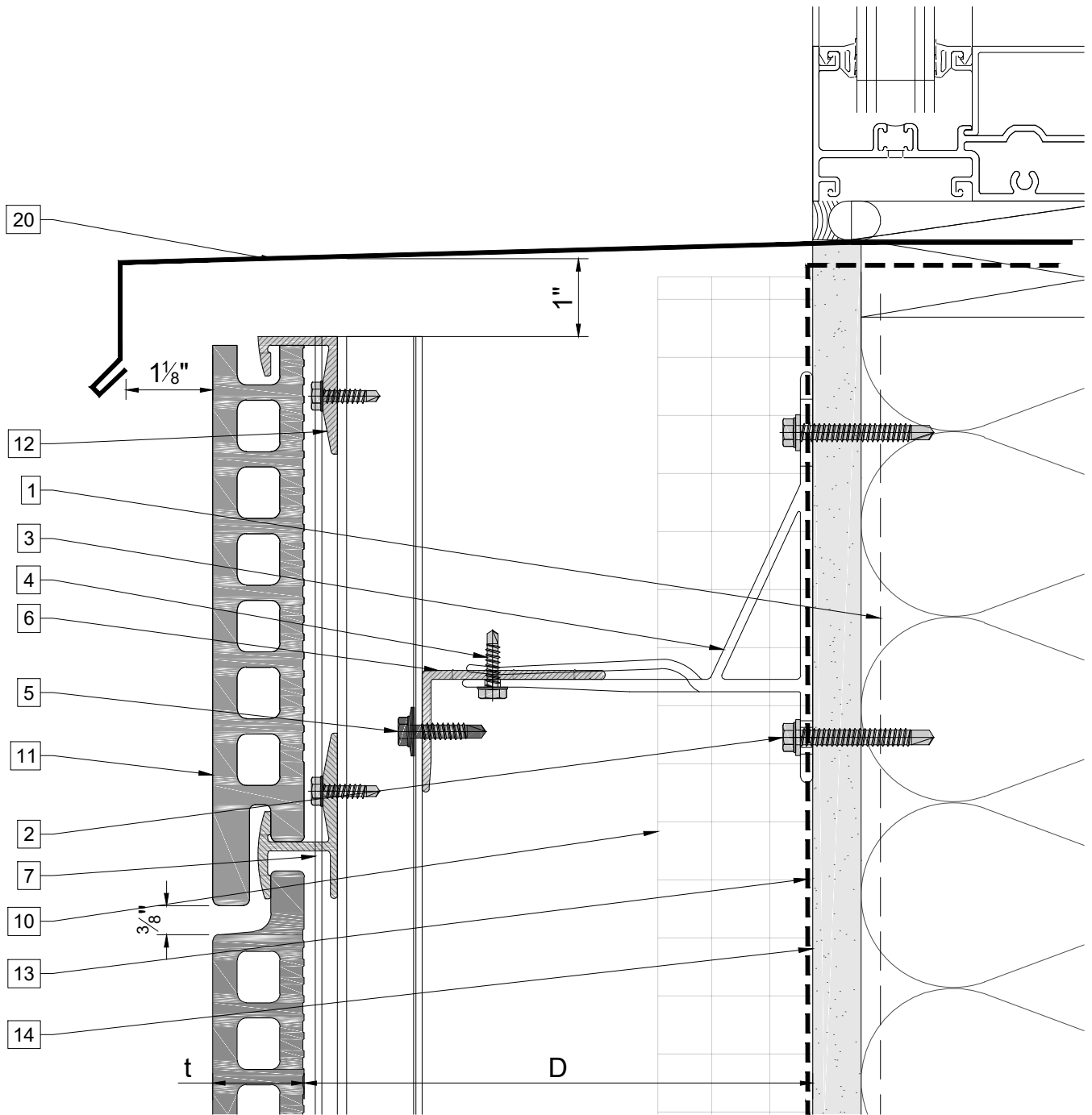
Legend

- | | | |
|--|--------------------------|------------------------------------|
| 1. Steel stud (16 GA typical) | 9. Press Profile / Piece | 17. Vertical L-profile |
| 2. Perimeter anchor | 10. Insulation | 18. Coping |
| 3. Alpha H wall bracket | 11. Tile | 19. Perforated window head closure |
| 4. st/st self-drilling screw $\frac{3}{16}'' \times \frac{3}{4}''$ | 12. Tile Clamp | 20. Window sill |
| 5. st/st self-drilling screw $\frac{1}{4}'' \times 1''$ | 13. A/V barrier | 21. Perforated base closure |
| 6. Horizontal L-profile | 14. Exterior wall | |
| 7. Vertical Omega-profile | 15. Outer corner closure | |
| 8. Joint profile | 16. Jamb closure | |
| | | D - System depth |
| | | t - Panel thickness |



Legend

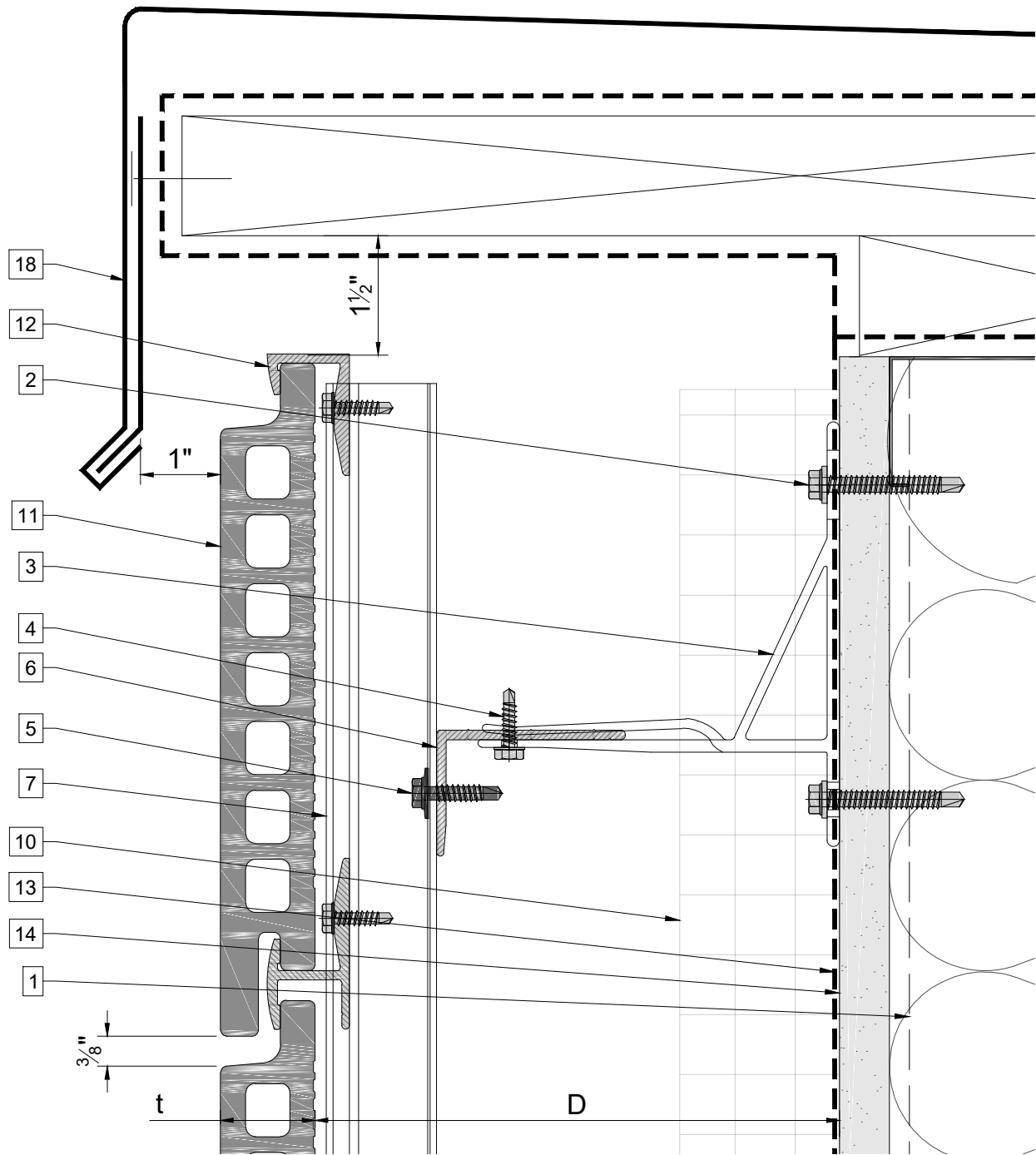
- | | | |
|--|--|--|
| <ul style="list-style-type: none"> 1. Steel stud (16 GA typical) 2. Perimeter anchor 3. Alpha H wall bracket 4. st/st self-drilling screw $\frac{3}{16}'' \times \frac{3}{4}''$ 5. st/st self-drilling screw $\frac{1}{4}'' \times 1''$ 6. Horizontal L-profile 7. Vertical Omega-profile 8. Joint profile | <ul style="list-style-type: none"> 9. Press Profile / Piece 10. Insulation 11. Tile 12. Tile Clamp 13. A/V barrier 14. Exterior wall 15. Outer corner closure 16. Jamb closure | <ul style="list-style-type: none"> 17. Vertical L-profile 18. Coping 19. Perforated window head closure 20. Window sill 21. Perforated base closure <p>D - System depth
t - Panel thickness</p> |
|--|--|--|



Legend

- | | | |
|--|--|--|
| <ul style="list-style-type: none"> 1. Steel stud (16 GA typical) 2. Perimeter anchor 3. Alpha H wall bracket 4. st/st self-drilling screw $\frac{3}{16}'' \times \frac{3}{4}''$ 5. st/st self-drilling screw $\frac{1}{4}'' \times 1''$ 6. Horizontal L-profile 7. Vertical Omega-profile 8. Joint profile | <ul style="list-style-type: none"> 9. Press Profile / Piece 10. Insulation 11. Tile 12. Tile Clamp 13. A/V barrier 14. Exterior wall 15. Outer corner closure 16. Jamb closure | <ul style="list-style-type: none"> 17. Vertical L-profile 18. Coping 19. Perforated window head closure 20. Window sill 21. Perforated base closure <p>D - System depth
t - Panel thickness</p> |
|--|--|--|

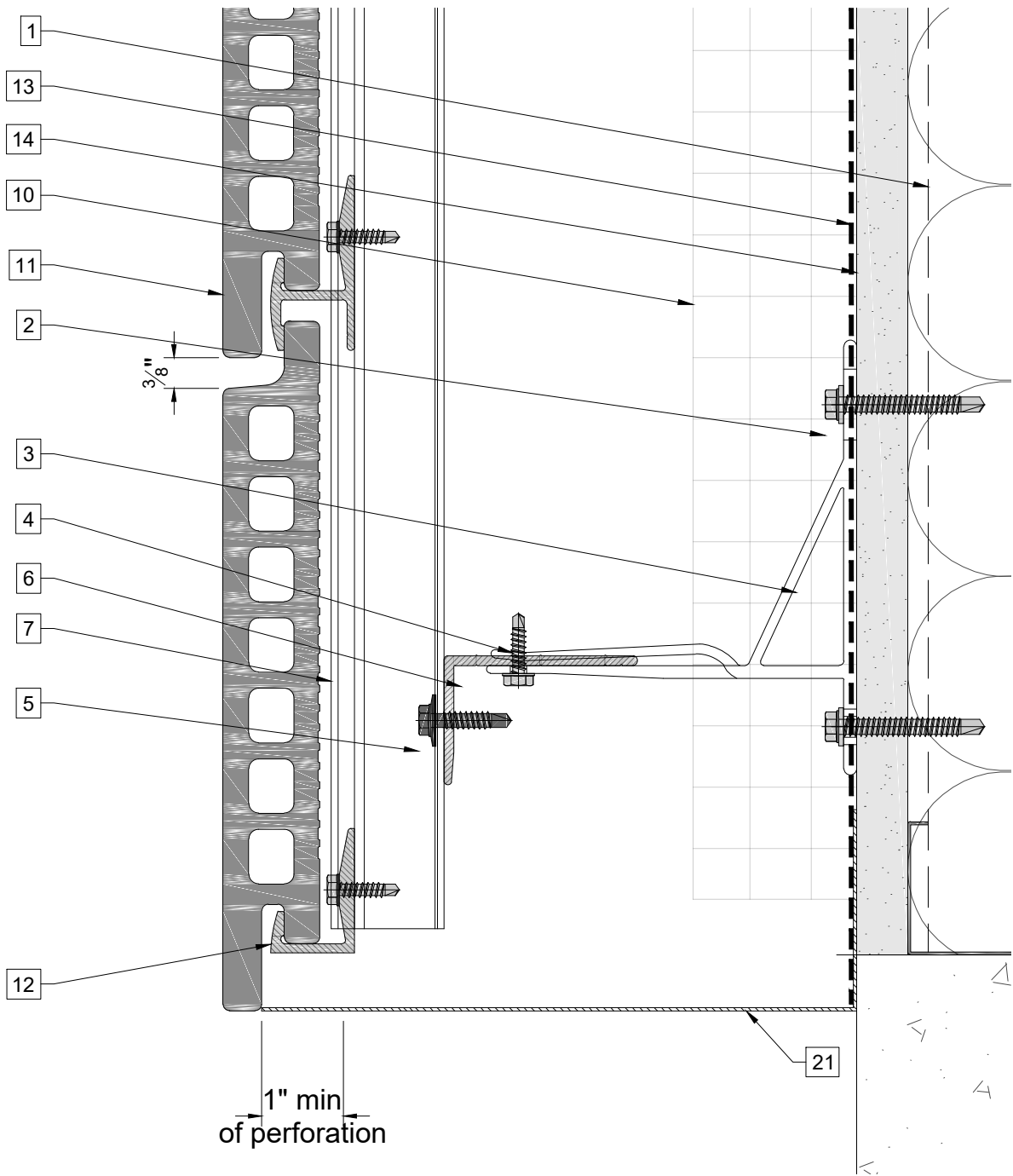
Coping detail



Legend

- | | | |
|--|--------------------------|------------------------------------|
| 1. Steel stud (16 GA typical) | 9. Press Profile / Piece | 17. Vertical L-profile |
| 2. Perimeter anchor | 10. Insulation | 18. Coping |
| 3. Alpha H wall bracket | 11. Tile | 19. Perforated window head closure |
| 4. st/st self-drilling screw $\frac{3}{16}'' \times \frac{3}{4}''$ | 12. Tile Clamp | 20. Window sill |
| 5. st/st self-drilling screw $\frac{1}{4}'' \times 1''$ | 13. A/V barrier | 21. Perforated base closure |
| 6. Horizontal L-profile | 14. Exterior wall | |
| 7. Vertical Omega-profile | 15. Outer corner closure | |
| 8. Joint profile | 16. Jamb closure | |
| | | D - System depth |
| | | t - Panel thickness |

Base detail



Legend

- | | | |
|--|--------------------------|------------------------------------|
| 1. Steel stud (16 GA typical) | 9. Press Profile / Piece | 17. Vertical L-profile |
| 2. Perimeter anchor | 10. Insulation | 18. Coping |
| 3. Alpha H wall bracket | 11. Tile | 19. Perforated window head closure |
| 4. st/st self-drilling screw $\frac{3}{16}'' \times \frac{3}{4}''$ | 12. Tile Clamp | 20. Window sill |
| 5. st/st self-drilling screw $\frac{1}{4}'' \times 1''$ | 13. A/V barrier | 21. Perforated base closure |
| 6. Horizontal L-profile | 14. Exterior wall | |
| 7. Vertical Omega-profile | 15. Outer corner closure | D - System depth |
| 8. Joint profile | 16. Jamb closure | t - Panel thickness |