

System depth				
Bracket	min. D system depth	max. D system depth	R	t panel thickness
Alpha V 035 / Alpha V+ 035	3 <sup>5</sup> / <sub>16</sub> " (84mm)	4 <sup>7</sup> / <sub>16</sub> " (112mm)	1 <sup>7</sup> / <sub>16</sub> " (37mm)	varies
Alpha V 050 / Alpha V+ 050	3 <sup>9</sup> / <sub>16</sub> " (90mm)	5" (127mm)	1 <sup>7</sup> / <sub>16</sub> " (37mm)	varies
Alpha V 080 / Alpha V+ 080	4 <sup>3</sup> / <sub>4</sub> " (120mm)	6 <sup>3</sup> / <sub>16</sub> " (157mm)	1 <sup>7</sup> / <sub>16</sub> " (37mm)	varies
Alpha V 100 / Alpha V+ 100	5 <sup>1</sup> / <sub>2</sub> " (140mm)	7" (177mm)	1 <sup>7</sup> / <sub>16</sub> " (37mm)	varies
Alpha V 115 / Alpha V+ 115	6 <sup>1</sup> / <sub>8</sub> " (155mm)	7 <sup>9</sup> / <sub>16</sub> " (192mm)	1 <sup>7</sup> / <sub>16</sub> " (37mm)	varies
Alpha V 135 / Alpha V+ 135	6 <sup>7</sup> / <sub>8</sub> " (175mm)	8 <sup>3</sup> / <sub>8</sub> " (212mm)	1 <sup>7</sup> / <sub>16</sub> " (37mm)	varies
Alpha V 150 / Alpha V+ 150	7 <sup>1</sup> / <sub>2</sub> " (190mm)	8 <sup>15</sup> / <sub>16</sub> " (227mm)	1 <sup>7</sup> / <sub>16</sub> " (37mm)	varies
Alpha V 170 / Alpha V+ 170	8 <sup>1</sup> / <sub>4</sub> " (210mm)	9 <sup>3</sup> / <sub>4</sub> " (247mm)	1 <sup>7</sup> / <sub>16</sub> " (37mm)	varies
Alpha V 185 / Alpha V+ 185	8 <sup>7</sup> / <sub>8</sub> " (225mm)	10 <sup>5</sup> / <sub>16</sub> " (262mm)	1 <sup>7</sup> / <sub>16</sub> " (37mm)	varies
Alpha V 200 / Alpha V+ 200	9 <sup>7</sup> / <sub>16</sub> " (240mm)	10 <sup>7</sup> / <sub>8</sub> " (277mm)	1 <sup>7</sup> / <sub>16</sub> " (37mm)	varies
Alpha V 220 / Alpha V+ 220	10 <sup>1</sup> / <sub>4</sub> " (260mm)	11 <sup>11</sup> / <sub>16</sub> " (297mm)	1 <sup>7</sup> / <sub>16</sub> " (37mm)	varies
Alpha V 255 / Alpha V+ 255	11 <sup>5</sup> / <sub>8</sub> " (295mm)	1'-1 <sup>1</sup> / <sub>16</sub> " (332mm)	1 <sup>7</sup> / <sub>16</sub> " (37mm)	varies

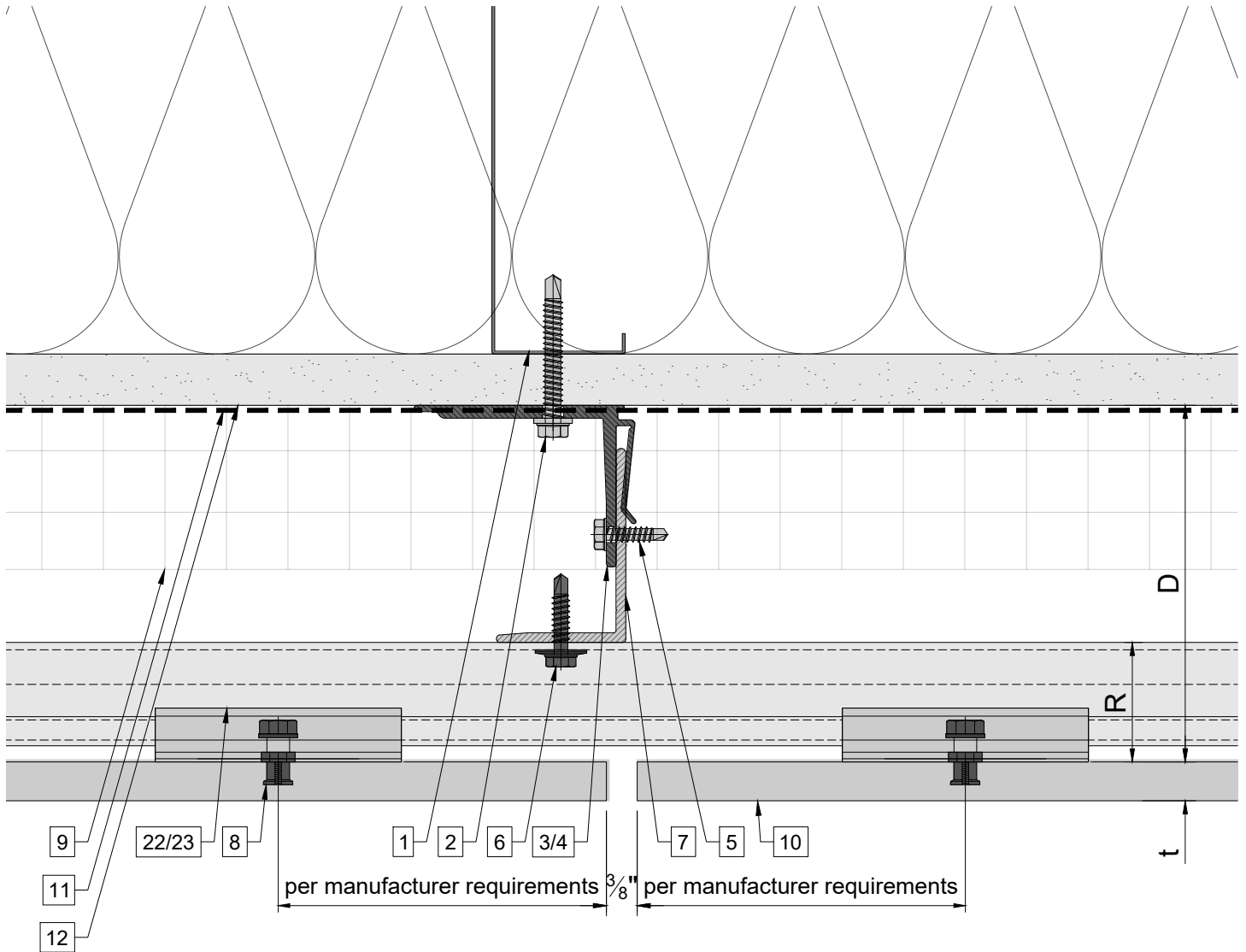
Legend

- 1. Steel stud (16 GA typical)
- 2. Perimeter anchor
- 3. Alpha V wall bracket
- 4. Alpha V+ wall bracket
- 5. st/st self-drilling screw <sup>3</sup>/<sub>16</sub>"x<sup>3</sup>/<sub>4</sub>"
- 6. st/st self-drilling screw <sup>1</sup>/<sub>4</sub>"x1"
- 7. Vertical L-profile
- 8. Undercut anchor
- 9. Insulation
- 10. Panel
- 11. A/V barrier

- 12. Exterior wall
- 13. Outer corner closure
- 14. Inner corner closure
- 15. Jamb closure
- 16. L-profile clip
- 17. Coping
- 18. Perforated window head closure
- 19. Window sill
- 20. Perforated base closure
- 21. Carrier rail

- 22. Hanger, adjustable
  - 23. Hanger, non-adjustable
  - 24. Leveling bolt M6
  - 25. Fixing screw <sup>3</sup>/<sub>16</sub>"x1"
  - 26. Rivet
- D - System depth  
t - Panel thickness  
R - Carrier rail and hanger

- \* Ventilation will vary based on insulation depth.
- \*\* Minimum ventilation requirement should be qualified by panel manufacturer.
- \*\*\* One of adjustable hangers per panel to be fixed with fixing screw <sup>3</sup>/<sub>16</sub>"x1"



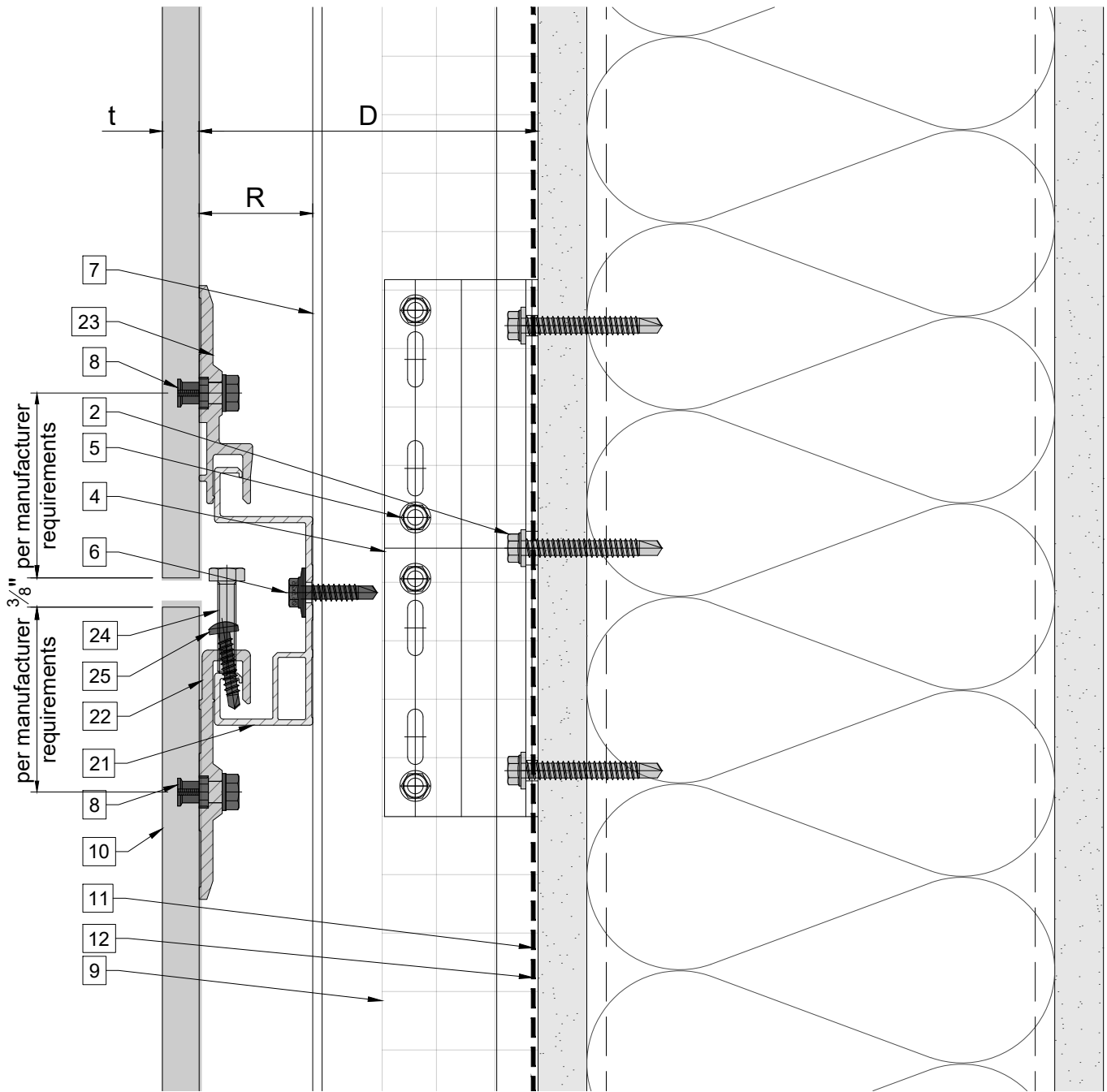
Legend

- 1. Steel stud (16 GA typical)
- 2. Perimeter anchor
- 3. Alpha V wall bracket
- 4. Alpha V+ wall bracket
- 5. st/st self-drilling screw  $\frac{3}{16}$ "x $\frac{3}{4}$ "
- 6. st/st self-drilling screw  $\frac{1}{4}$ "x1"
- 7. Vertical L-profile
- 8. Undercut anchor
- 9. Insulation
- 10. Panel
- 11. A/V barrier

- 12. Exterior wall
- 13. Outer corner closure
- 14. Inner corner closure
- 15. Jamb closure
- 16. L-profile clip
- 17. Coping
- 18. Perforated window head closure
- 19. Window sill
- 20. Perforated base closure
- 21. Carrier rail

- 22. Hanger, adjustable
- 23. Hanger, non-adjustable
- 24. Leveling bolt M6
- 25. Fixing screw  $\frac{3}{16}$ "x1"
- 26. Rivet
- D - System depth
- t - Panel thickness
- R - Carrier rail and hanger

- \* Ventilation will vary based on insulation depth.
- \*\* Minimum ventilation requirement should be qualified by panel manufacturer.
- \*\*\* One of adjustable hangers per panel to be fixed with fixing screw  $\frac{3}{16}$ "x1"



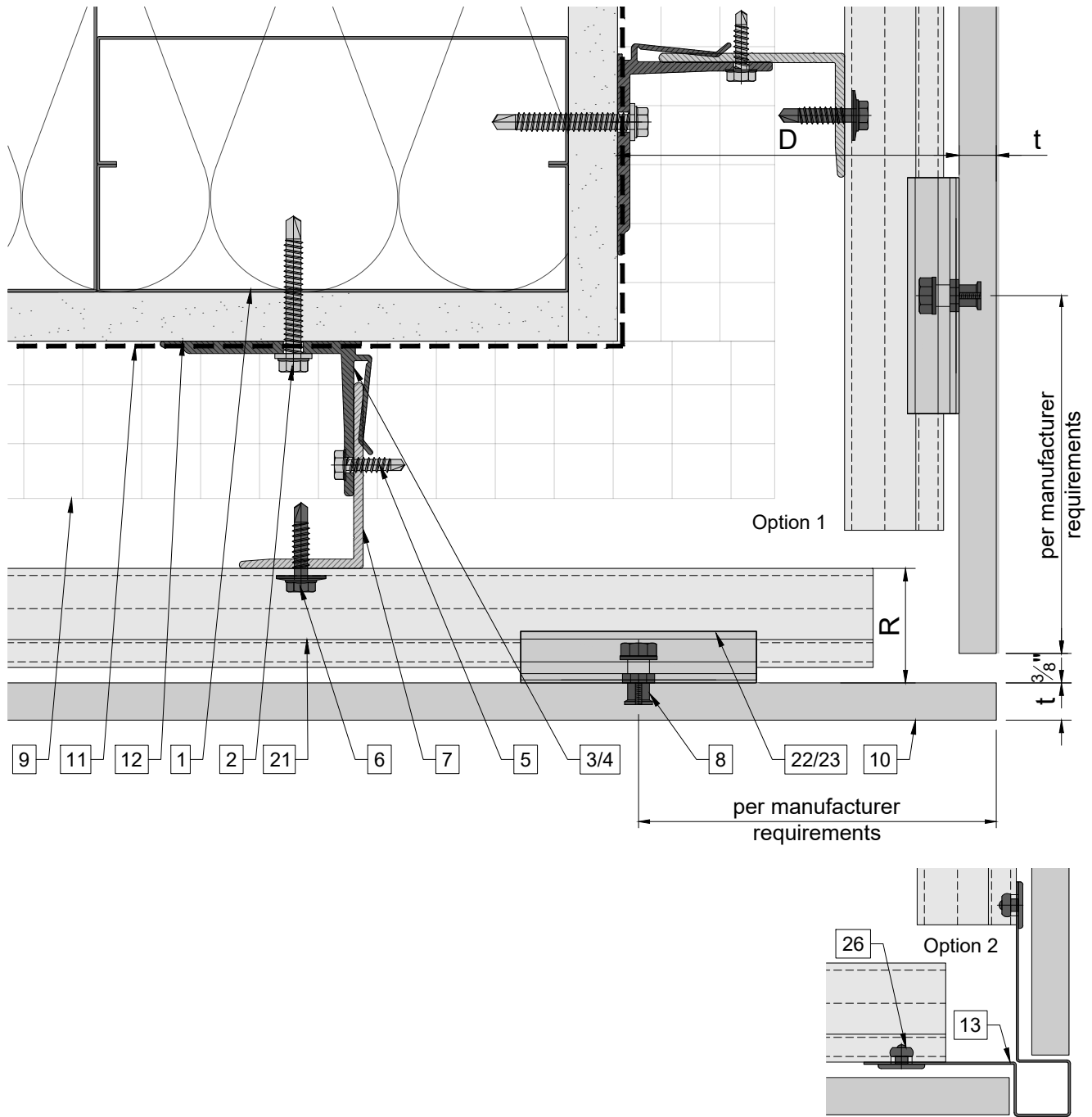
Legend

- 1. Steel stud (16 GA typical)
- 2. Perimeter anchor
- 3. Alpha V wall bracket
- 4. Alpha V+ wall bracket
- 5. st/st self-drilling screw  $\frac{3}{16}$ "x $\frac{3}{4}$ "
- 6. st/st self-drilling screw  $\frac{1}{4}$ "x1"
- 7. Vertical L-profile
- 8. Undercut anchor
- 9. Insulation
- 10. Panel
- 11. A/V barrier

- 12. Exterior wall
- 13. Outer corner closure
- 14. Inner corner closure
- 15. Jamb closure
- 16. L-profile clip
- 17. Coping
- 18. Perforated window head closure
- 19. Window sill
- 20. Perforated base closure
- 21. Carrier rail

- 22. Hanger, adjustable
- 23. Hanger, non-adjustable
- 24. Leveling bolt M6
- 25. Fixing screw  $\frac{3}{16}$ "x1"
- 26. Rivet
- D - System depth
- t - Panel thickness
- R - Carrier rail and hanger

\* Ventilation will vary based on insulation depth.  
 \*\* Minimum ventilation requirement should be qualified by panel manufacturer.  
 \*\*\* One of adjustable hangers per panel to be fixed with fixing screw  $\frac{3}{16}$ "x1"



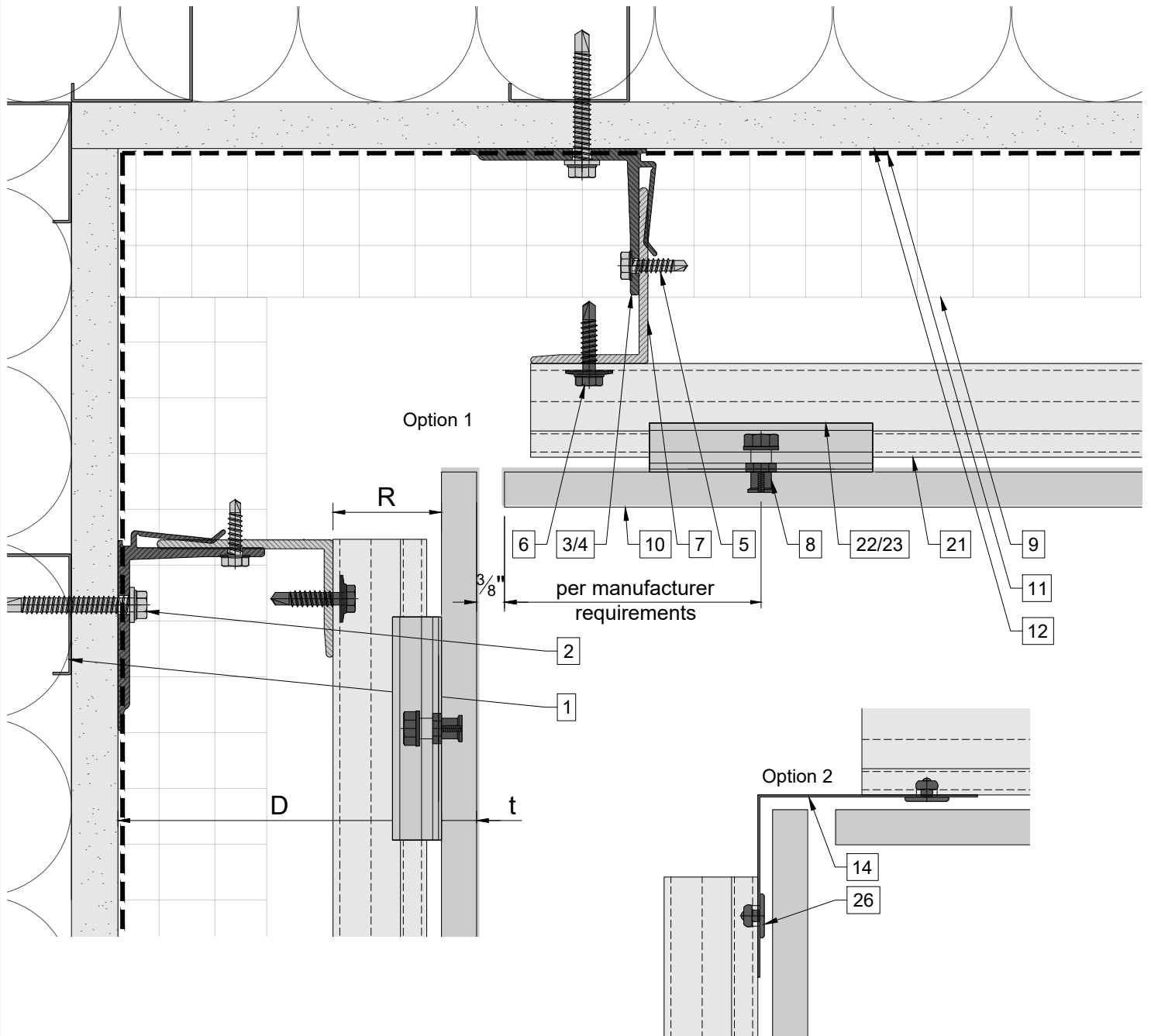
**Legend**

- 1. Steel stud (16 GA typical)
- 2. Perimeter anchor
- 3. Alpha V wall bracket
- 4. Alpha V+ wall bracket
- 5. st/st self-drilling screw  $\frac{3}{16}'' \times \frac{3}{4}''$
- 6. st/st self-drilling screw  $\frac{1}{4}'' \times 1''$
- 7. Vertical L-profile
- 8. Undercut anchor
- 9. Insulation
- 10. Panel
- 11. A/V barrier

- 12. Exterior wall
- 13. Outer corner closure
- 14. Inner corner closure
- 15. Jamb closure
- 16. L-profile clip
- 17. Coping
- 18. Perforated window head closure
- 19. Window sill
- 20. Perforated base closure
- 21. Carrier rail

- 22. Hanger, adjustable
  - 23. Hanger, non-adjustable
  - 24. Leveling bolt M6
  - 25. Fixing screw  $\frac{3}{16}'' \times 1''$
  - 26. Rivet
- D - System depth  
t - Panel thickness  
R - Carrier rail and hanger

\* Ventilation will vary based on insulation depth.  
 \*\* Minimum ventilation requirement should be qualified by panel manufacturer.  
 \*\*\* One of adjustable hangers per panel to be fixed with fixing screw  $\frac{3}{16}'' \times 1''$



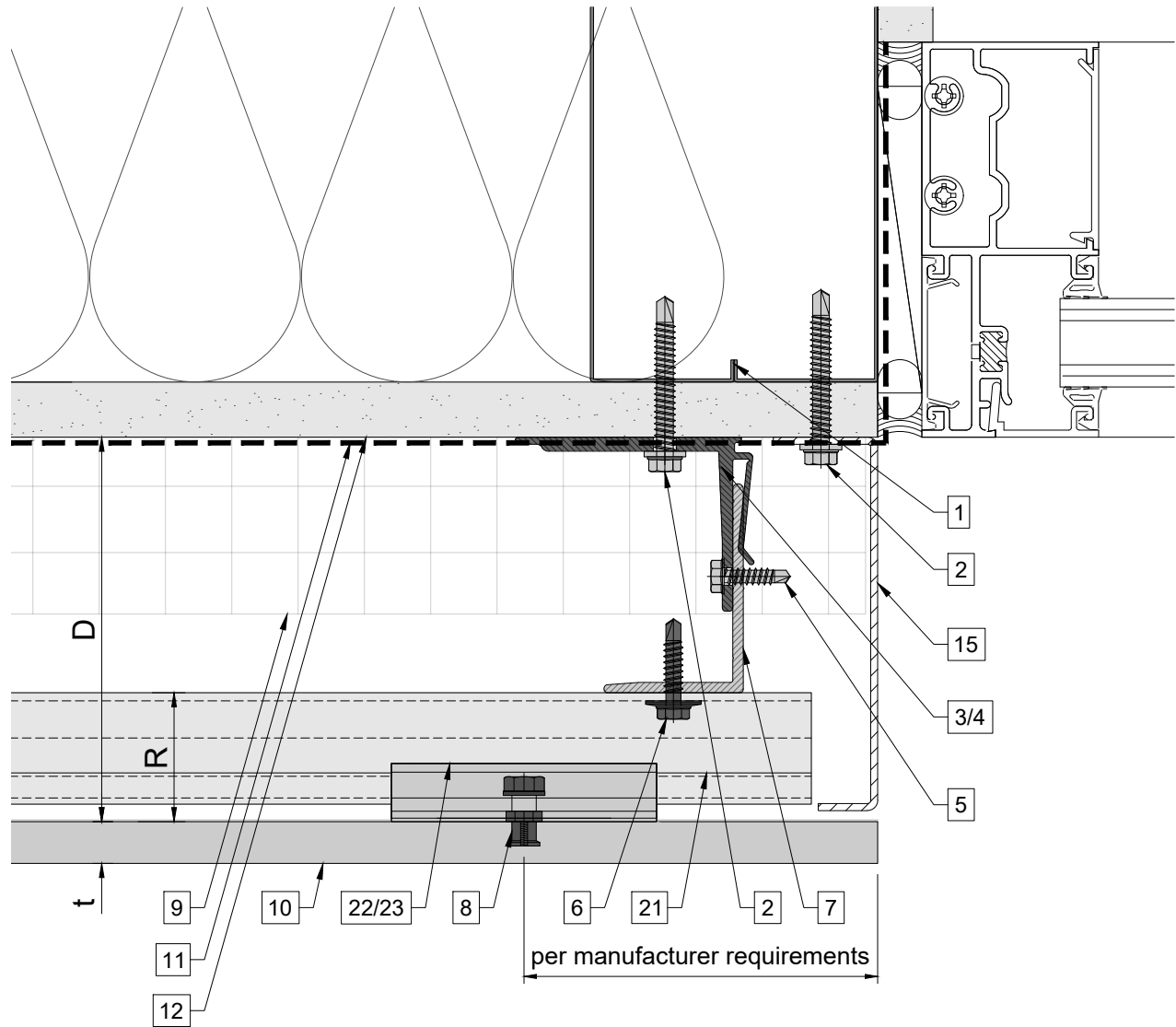
Legend

- 1. Steel stud (16 GA typical)
- 2. Perimeter anchor
- 3. Alpha V wall bracket
- 4. Alpha V+ wall bracket
- 5. st/st self-drilling screw  $\frac{3}{16}'' \times \frac{3}{4}''$
- 6. st/st self-drilling screw  $\frac{1}{4}'' \times 1''$
- 7. Vertical L-profile
- 8. Undercut anchor
- 9. Insulation
- 10. Panel
- 11. A/V barrier

- 12. Exterior wall
- 13. Outer corner closure
- 14. Inner corner closure
- 15. Jamb closure
- 16. L-profile clip
- 17. Coping
- 18. Perforated window head closure
- 19. Window sill
- 20. Perforated base closure
- 21. Carrier rail

- 22. Hanger, adjustable
  - 23. Hanger, non-adjustable
  - 24. Leveling bolt M6
  - 25. Fixing screw  $\frac{3}{16}'' \times 1''$
  - 26. Rivet
- D - System depth  
t - Panel thickness  
R - Carrier rail and hanger

\* Ventilation will vary based on insulation depth.  
 \*\* Minimum ventilation requirement should be qualified by panel manufacturer.  
 \*\*\* One of adjustable hangers per panel to be fixed with fixing screw  $\frac{3}{16}'' \times 1''$



**Legend**

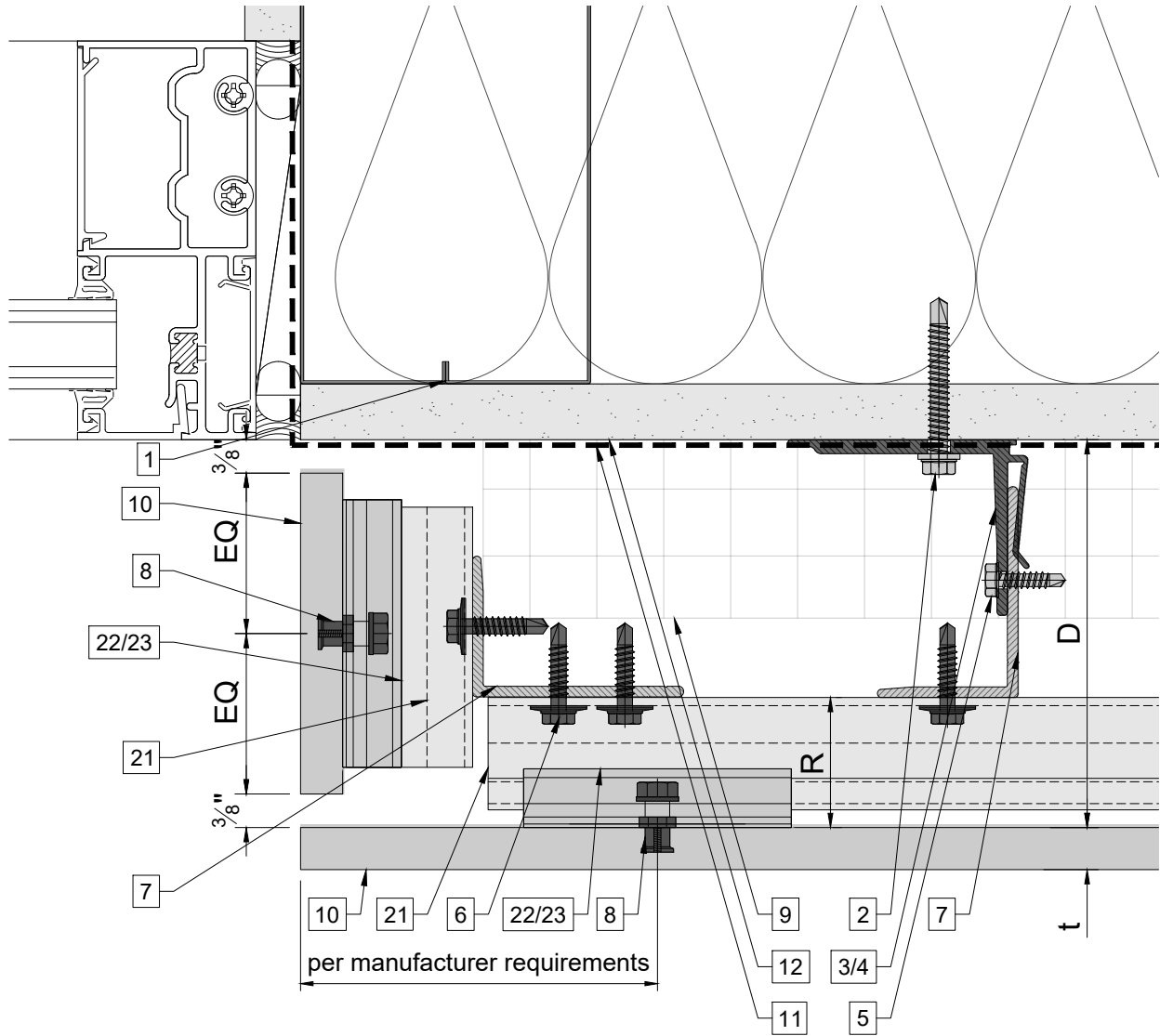
- 1. Steel stud (16 GA typical)
- 2. Perimeter anchor
- 3. Alpha V wall bracket
- 4. Alpha V+ wall bracket
- 5. st/st self-drilling screw  $\frac{3}{16}$ "x $\frac{3}{4}$ "
- 6. st/st self-drilling screw  $\frac{1}{4}$ "x1"
- 7. Vertical L-profile
- 8. Undercut anchor
- 9. Insulation
- 10. Panel
- 11. A/V barrier

- 12. Exterior wall
- 13. Outer corner closure
- 14. Inner corner closure
- 15. Jamb closure
- 16. L-profile clip
- 17. Coping
- 18. Perforated window head closure
- 19. Window sill
- 20. Perforated base closure
- 21. Carrier rail

- 22. Hanger, adjustable
  - 23. Hanger, non-adjustable
  - 24. Leveling bolt M6
  - 25. Fixing screw  $\frac{3}{16}$ "x1"
  - 26. Rivet
- D - System depth  
t - Panel thickness  
R - Carrier rail and hanger

\* Ventilation will vary based on insulation depth.  
 \*\* Minimum ventilation requirement should be qualified by panel manufacturer.  
 \*\*\* One of adjustable hangers per panel to be fixed with fixing screw  $\frac{3}{16}$ "x1"





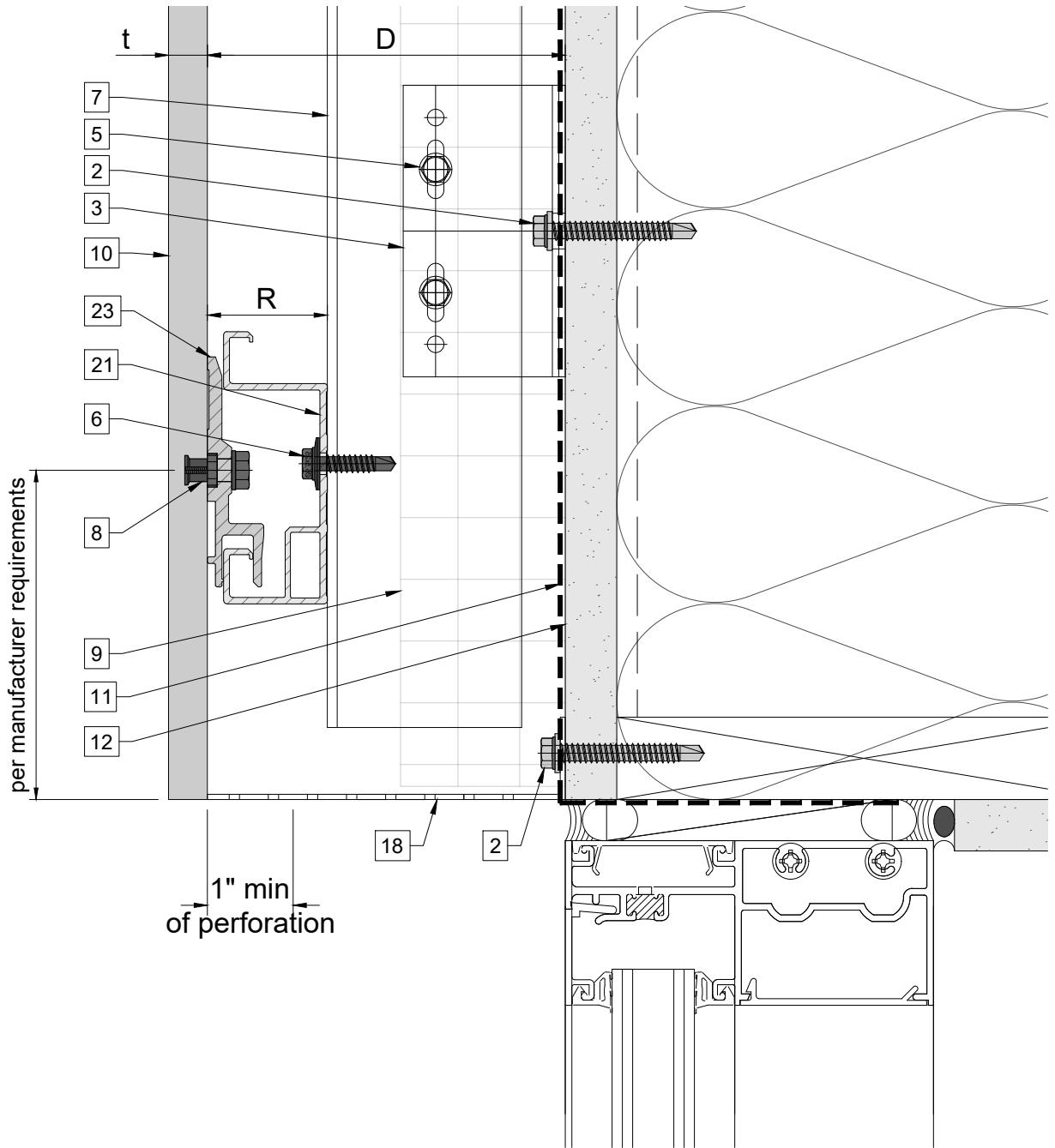
**Legend**

- 1. Steel stud (16 GA typical)
- 2. Perimeter anchor
- 3. Alpha V wall bracket
- 4. Alpha V+ wall bracket
- 5. st/st self-drilling screw  $\frac{3}{16}'' \times \frac{3}{4}''$
- 6. st/st self-drilling screw  $\frac{1}{4}'' \times 1''$
- 7. Vertical L-profile
- 8. Undercut anchor
- 9. Insulation
- 10. Panel
- 11. A/V barrier

- 12. Exterior wall
- 13. Outer corner closure
- 14. Inner corner closure
- 15. Jamb closure
- 16. L-profile clip
- 17. Coping
- 18. Perforated window head closure
- 19. Window sill
- 20. Perforated base closure
- 21. Carrier rail

- 22. Hanger, adjustable
- 23. Hanger, non-adjustable
- 24. Leveling bolt M6
- 25. Fixing screw  $\frac{3}{16}'' \times 1''$
- 26. Rivet
- D - System depth
- t - Panel thickness
- R - Carrier rail and hanger

\* Ventilation will vary based on insulation depth.  
 \*\* Minimum ventilation requirement should be qualified by panel manufacturer.  
 \*\*\* One of adjustable hangers per panel to be fixed with fixing screw  $\frac{3}{16}'' \times 1''$



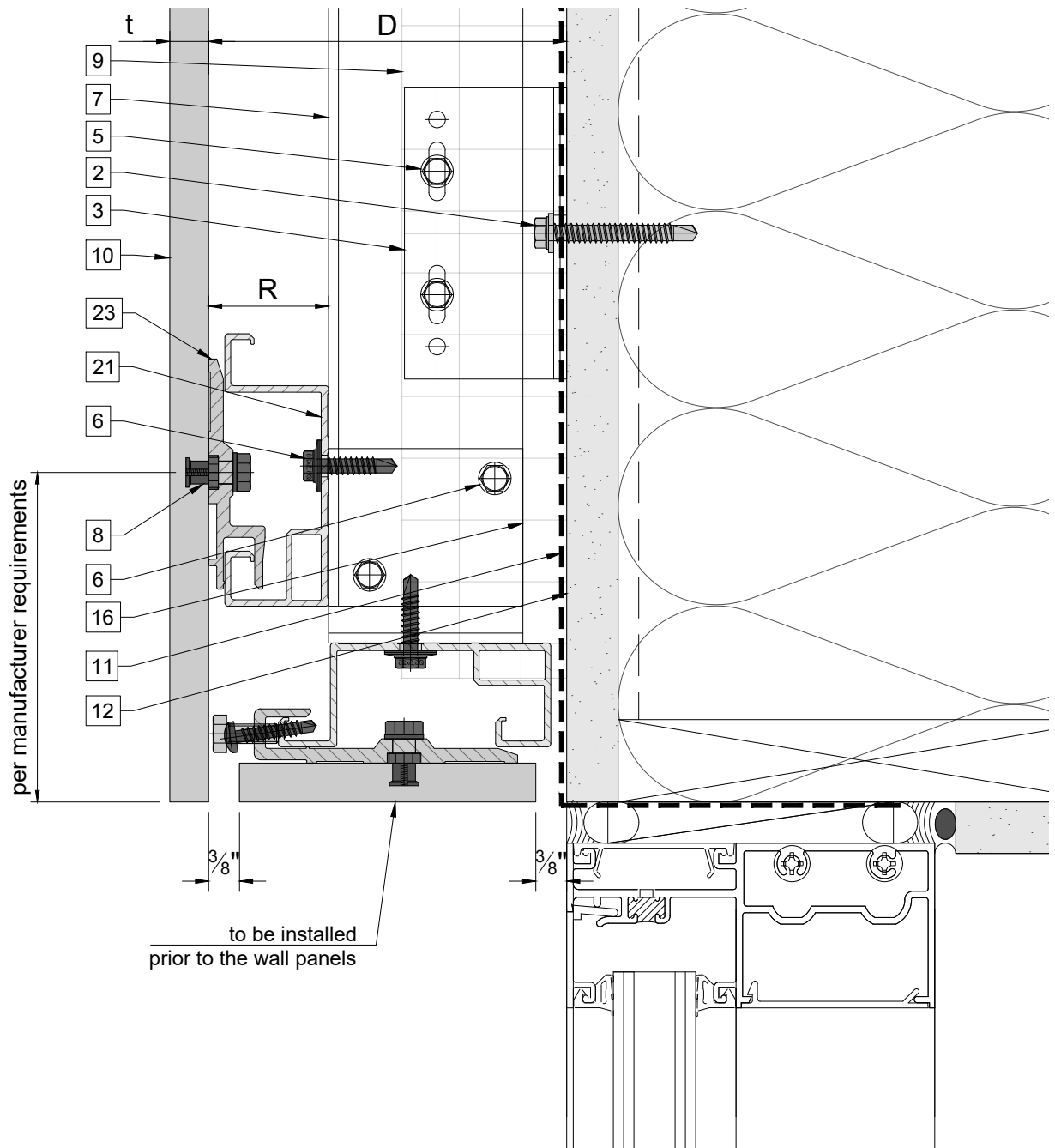
**Legend**

- 1. Steel stud (16 GA typical)
- 2. Perimeter anchor
- 3. Alpha V wall bracket
- 4. Alpha V+ wall bracket
- 5. st/st self-drilling screw  $\frac{3}{16}'' \times \frac{3}{4}''$
- 6. st/st self-drilling screw  $\frac{1}{4}'' \times 1''$
- 7. Vertical L-profile
- 8. Undercut anchor
- 9. Insulation
- 10. Panel
- 11. A/V barrier

- 12. Exterior wall
- 13. Outer corner closure
- 14. Inner corner closure
- 15. Jamb closure
- 16. L-profile clip
- 17. Coping
- 18. Perforated window head closure
- 19. Window sill
- 20. Perforated base closure
- 21. Carrier rail

- 22. Hanger, adjustable
- 23. Hanger, non-adjustable
- 24. Leveling bolt M6
- 25. Fixing screw  $\frac{3}{16}'' \times 1''$
- 26. Rivet
- D - System depth
- t - Panel thickness
- R - Carrier rail and hanger

\* Ventilation will vary based on insulation depth.  
 \*\* Minimum ventilation requirement should be qualified by panel manufacturer.  
 \*\*\* One of adjustable hangers per panel to be fixed with fixing screw  $\frac{3}{16}'' \times 1''$



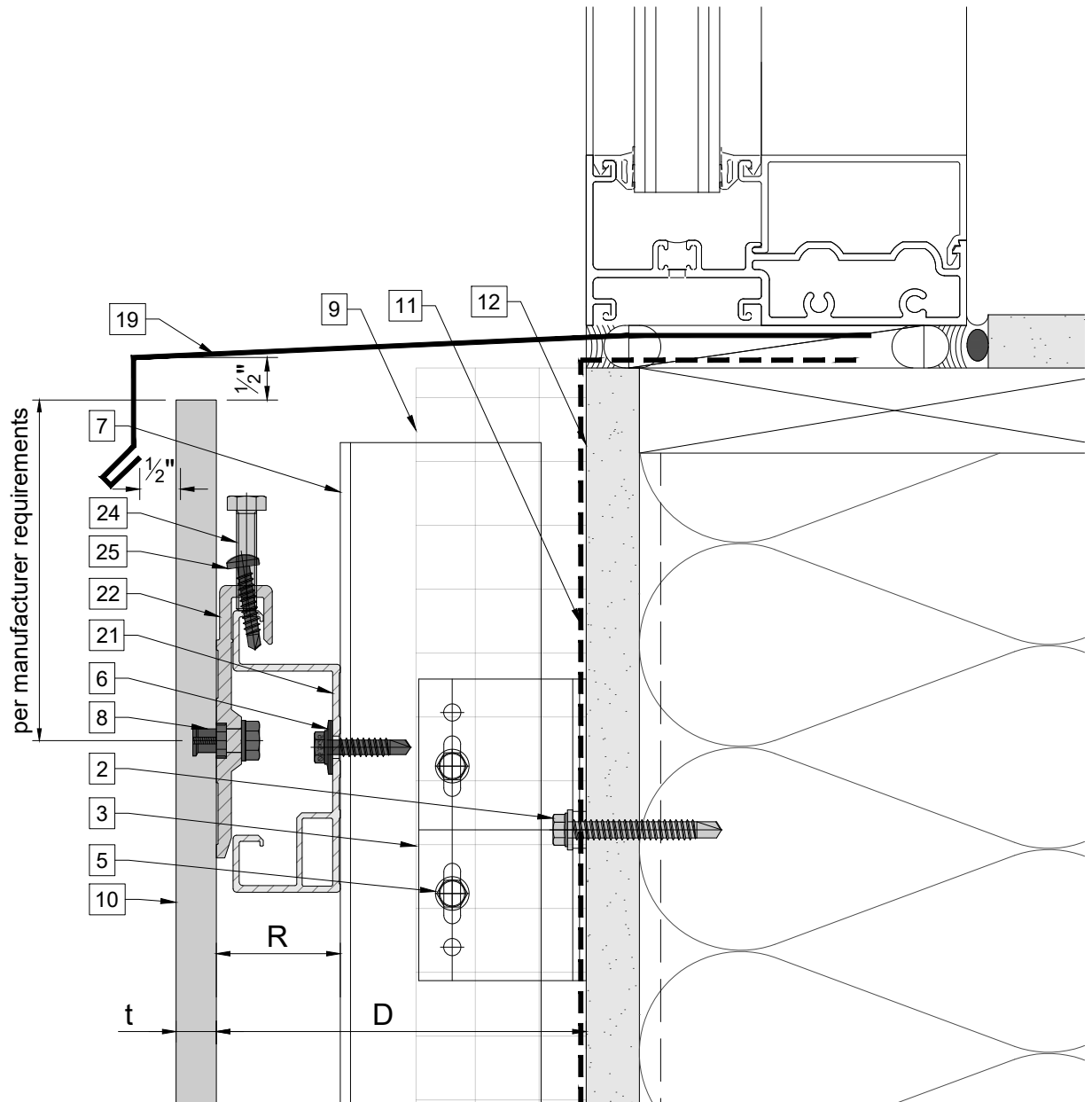
**Legend**

- 1. Steel stud (16 GA typical)
- 2. Perimeter anchor
- 3. Alpha V wall bracket
- 4. Alpha V+ wall bracket
- 5. st/st self-drilling screw  $\frac{3}{16}'' \times \frac{3}{4}''$
- 6. st/st self-drilling screw  $\frac{1}{4}'' \times 1''$
- 7. Vertical L-profile
- 8. Undercut anchor
- 9. Insulation
- 10. Panel
- 11. A/V barrier

- 12. Exterior wall
- 13. Outer corner closure
- 14. Inner corner closure
- 15. Jamb closure
- 16. L-profile clip
- 17. Coping
- 18. Perforated window head closure
- 19. Window sill
- 20. Perforated base closure
- 21. Carrier rail

- 22. Hanger, adjustable
- 23. Hanger, non-adjustable
- 24. Leveling bolt M6
- 25. Fixing screw  $\frac{3}{16}'' \times 1''$
- 26. Rivet
- D - System depth
- t - Panel thickness
- R - Carrier rail and hanger

\* Ventilation will vary based on insulation depth.  
 \*\* Minimum ventilation requirement should be qualified by panel manufacturer.  
 \*\*\* One of adjustable hangers per panel to be fixed with fixing screw  $\frac{3}{16}'' \times 1''$



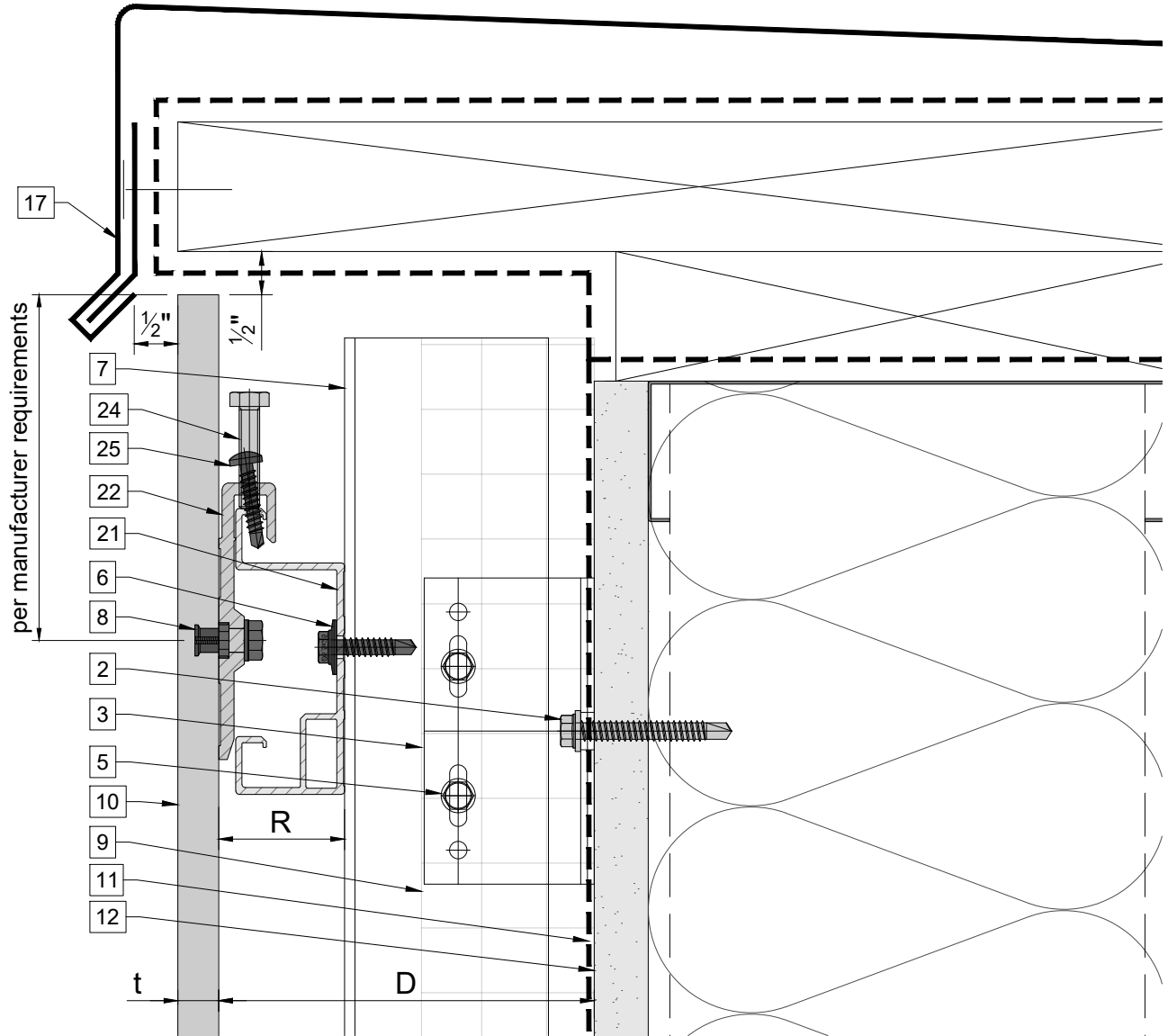
**Legend**

- 1. Steel stud (16 GA typical)
- 2. Perimeter anchor
- 3. Alpha V wall bracket
- 4. Alpha V+ wall bracket
- 5. st/st self-drilling screw  $\frac{3}{16}'' \times \frac{3}{4}''$
- 6. st/st self-drilling screw  $\frac{1}{4}'' \times 1''$
- 7. Vertical L-profile
- 8. Undercut anchor
- 9. Insulation
- 10. Panel
- 11. A/V barrier

- 12. Exterior wall
- 13. Outer corner closure
- 14. Inner corner closure
- 15. Jamb closure
- 16. L-profile clip
- 17. Coping
- 18. Perforated window head closure
- 19. Window sill
- 20. Perforated base closure
- 21. Carrier rail

- 22. Hanger, adjustable
- 23. Hanger, non-adjustable
- 24. Leveling bolt M6
- 25. Fixing screw  $\frac{3}{16}'' \times 1''$
- 26. Rivet
- D - System depth
- t - Panel thickness
- R - Carrier rail and hanger

\* Ventilation will vary based on insulation depth.  
 \*\* Minimum ventilation requirement should be qualified by panel manufacturer.  
 \*\*\* One of adjustable hangers per panel to be fixed with fixing screw  $\frac{3}{16}'' \times 1''$



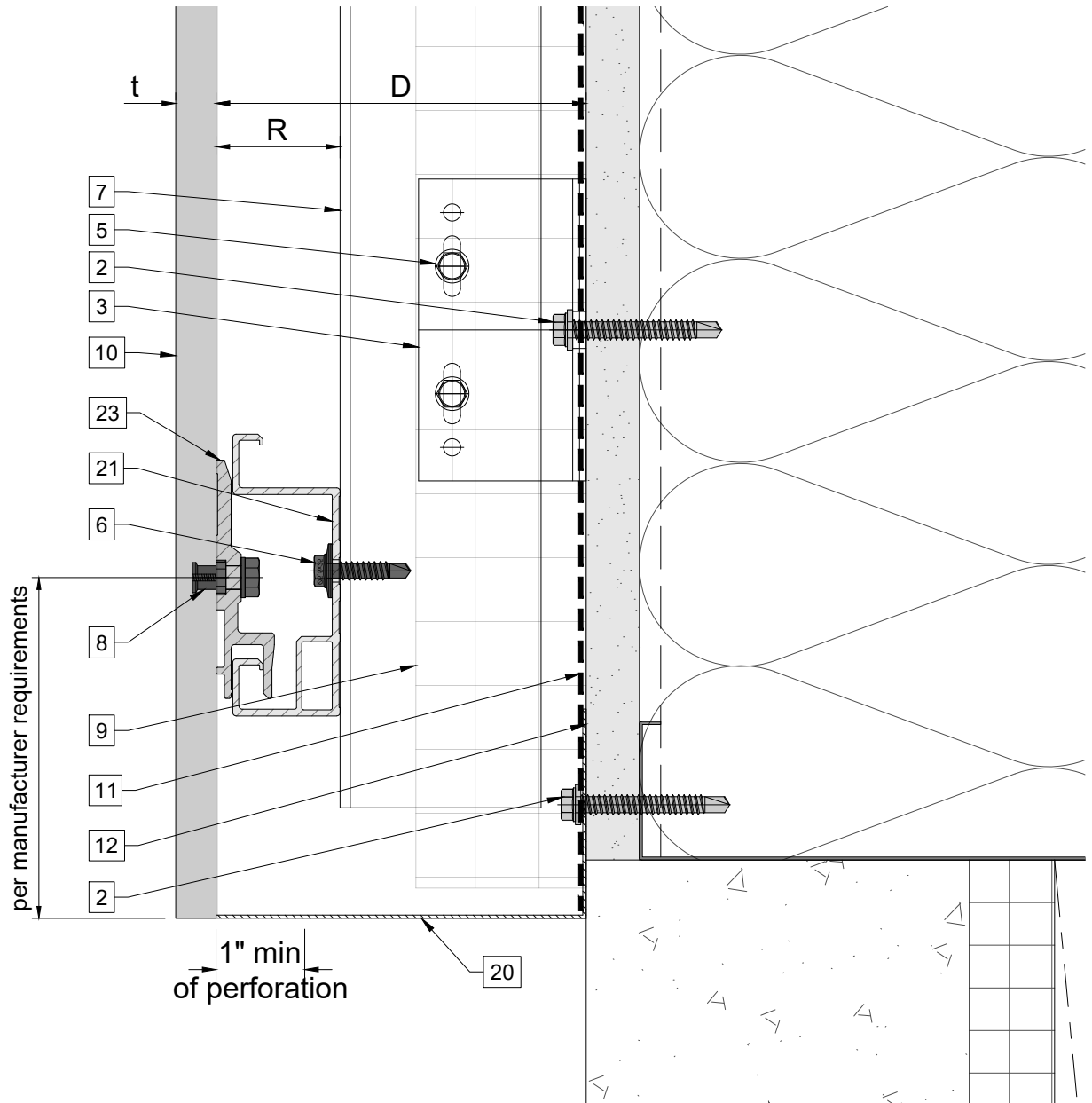
**Legend**

- 1. Steel stud (16 GA typical)
- 2. Perimeter anchor
- 3. Alpha V wall bracket
- 4. Alpha V+ wall bracket
- 5. st/st self-drilling screw  $\frac{3}{16}" \times \frac{3}{4}"$
- 6. st/st self-drilling screw  $\frac{1}{4}" \times 1"$
- 7. Vertical L-profile
- 8. Undercut anchor
- 9. Insulation
- 10. Panel
- 11. A/V barrier

- 12. Exterior wall
- 13. Outer corner closure
- 14. Inner corner closure
- 15. Jamb closure
- 16. L-profile clip
- 17. Coping
- 18. Perforated window head closure
- 19. Window sill
- 20. Perforated base closure
- 21. Carrier rail

- 22. Hanger, adjustable
- 23. Hanger, non-adjustable
- 24. Leveling bolt M6
- 25. Fixing screw  $\frac{3}{16}" \times 1"$
- 26. Rivet
- D - System depth
- t - Panel thickness
- R - Carrier rail and hanger

\* Ventilation will vary based on insulation depth.  
 \*\* Minimum ventilation requirement should be qualified by panel manufacturer.  
 \*\*\* One of adjustable hangers per panel to be fixed with fixing screw  $\frac{3}{16}" \times 1"$



Legend

- 1. Steel stud (16 GA typical)
- 2. Perimeter anchor
- 3. Alpha V wall bracket
- 4. Alpha V+ wall bracket
- 5. st/st self-drilling screw  $\frac{3}{16}$ "x $\frac{3}{4}$ "
- 6. st/st self-drilling screw  $\frac{1}{4}$ "x1"
- 7. Vertical L-profile
- 8. Undercut anchor
- 9. Insulation
- 10. Panel
- 11. A/V barrier

- 12. Exterior wall
- 13. Outer corner closure
- 14. Inner corner closure
- 15. Jamb closure
- 16. L-profile clip
- 17. Coping
- 18. Perforated window head closure
- 19. Window sill
- 20. Perforated base closure
- 21. Carrier rail

- 22. Hanger, adjustable
  - 23. Hanger, non-adjustable
  - 24. Leveling bolt M6
  - 25. Fixing screw  $\frac{3}{16}$ "x1"
  - 26. Rivet
- D - System depth  
t - Panel thickness  
R - Carrier rail and hanger

\* Ventilation will vary based on insulation depth.  
 \*\* Minimum ventilation requirement should be qualified by panel manufacturer.  
 \*\*\* One of adjustable hangers per panel to be fixed with fixing screw  $\frac{3}{16}$ "x1"