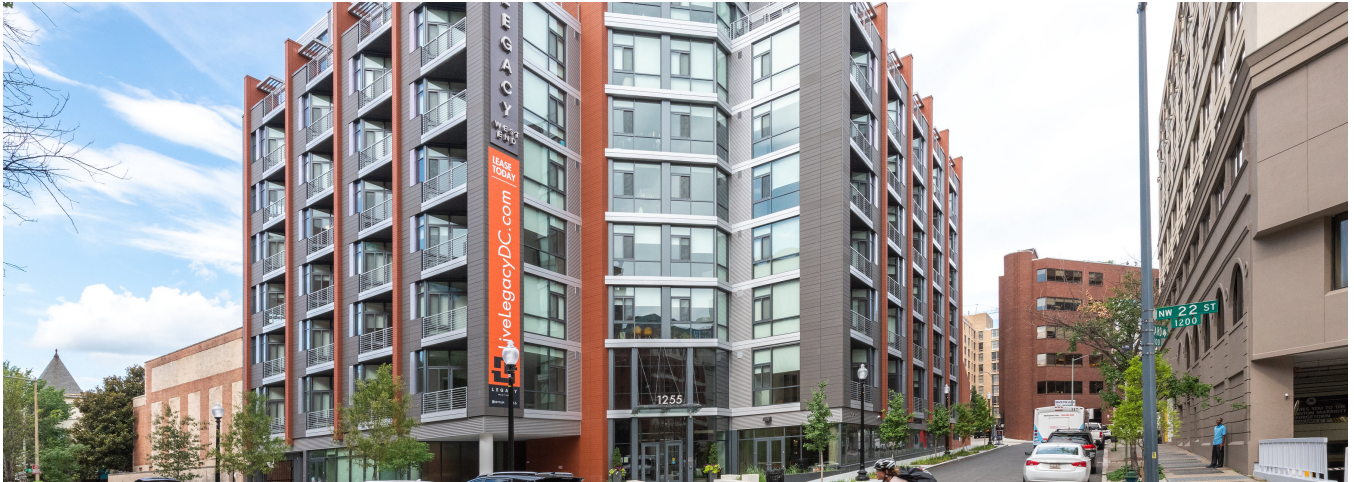


TERRACOTTA RAINSCREEN

1255 22nd Street, Washington, DC NW

New DC-based Condo featuring Terra5 Tiles in two colors and grooved finishes.



MTFA Architecture designed a new condominium on 22nd Street, NW Washington, DC. Two colors and four different tiles were incorporated to create a stunning new addition to the neighborhood.

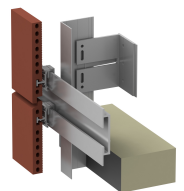
Using the **TC18 tiles** as a cost-effective terracotta solution, the design team featured red and gray panels to create rhythm and interest in the façade, with the balconies and corners using varying grooved tiles. The building's design has gained considerable attention for the developer to attract tenants/owners.

System Type: Vci.45

Panel Type: Terra5 TC18

Architect: MFTA Architecture

Completed: 2018



888-826-8453

CLADDING CORP

THE 1ST NAME IN RAINSCREEN

03012019