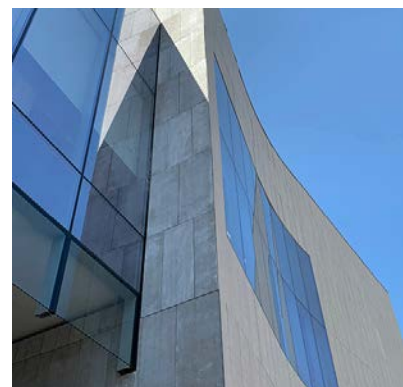
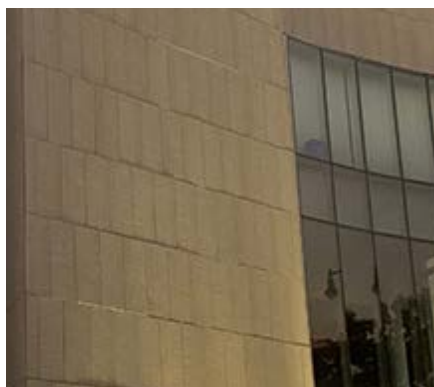
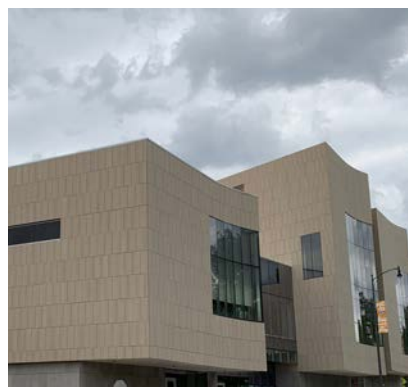


RAINSCREEN SUB-FRAMING SYSTEM



Center for Missouri Studies – Columbia, MO

Engineered Sub-framing System for Limestone Rainscreen Assembly



The center incorporates materials from different areas in Missouri including a dimensional limestone facade which is attached with ECO Cladding's Alpha Vci.41 concealed sub-framing system. The design by KCMO's Gould Evans reflects Missouri's geological characteristics. Installation of the limestone cladding was performed by Heitcamp Masonry of St. Louis.

Integrating local and recyclable products, the Historical Society wanted a structure that would last for a hundred years. Many efficiencies have been built into the design as they look to achieve LEED Gold status from the USGBC. ECO Cladding's Continuous Insulation (c.i.) compliant Alpha brackets contribute to the both the energy efficiency and sustainability of the building's envelope.

System Types: Alpha Vci.41

Panel Types: Limestone

Architect: Barker Nestor

888-826-8453

CLADDING CORP

THE 1ST NAME IN RAINSCREEN

V110119