

SWISSPEARL® FIBER CEMENT RAINSCREEN



# DC International School

*Academic Renovation Utilizes Striking Swisspearl® Façade*



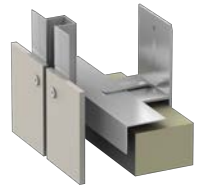
An academic renovation and addition project, the DC International School design was envisioned by renowned [Perkins-Eastman](#). This school's contemporary addition boasts a pristine facade clad with the subtle tones of Swisspearl® [REFLEX Champagne](#) fiber cement rainscreen cladding.

System Type: Alpha HZ.10 System

Panel Type: REFLEX Champagne

Architect: Perkins Eastman

Installer: CHU Contracting



Completed in 2018, this installation by CHU Contracting showcases the sheer beauty of Swisspearl® panels in a horizontal running bond attached with ECO Cladding's [Alpha HZ.10](#) engineered sub-framing system.

888-826-8453

**CLADDING CORP**

THE 1<sup>ST</sup> NAME IN RAINSCREEN

08012019