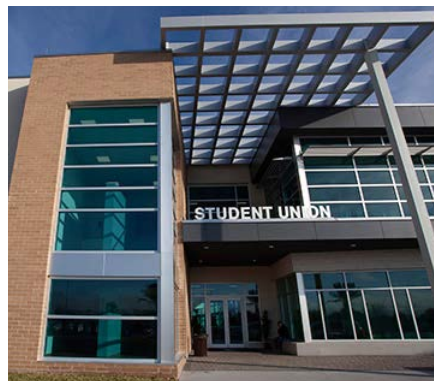




SWISSPEARL® FIBER CEMENT RAINSCREEN

EFSC Student Union Building – Melbourne, FL

Swisspearl Rainscreen Assembly for New Student Union Complex



BRPH Architects developed a comprehensive building program that responds to the needs of Eastern Florida State College (EFSC). A school which focuses on helping students stay enrolled and graduate on time. EFSC has highly affordable tuition and ranks 18th nationally in lowest tuition among all public colleges and universities.

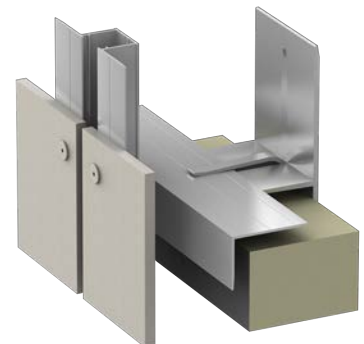
BRPH Architects found great success by using Swisspearl on EFSC's new buildings and in the process has created a fresh, new modern look for the campus.

The Student Union building incorporated a Swisspearl black panel, which a key architectural features across over five buildings on EFSC's campus.

System Type: Alpha Hci.10 System

Panel Type: Swisspearl®

Architect: BRPH Architects



888-826-8453

CLADDING CORP

THE 1ST NAME IN RAINSCREEN

08012019