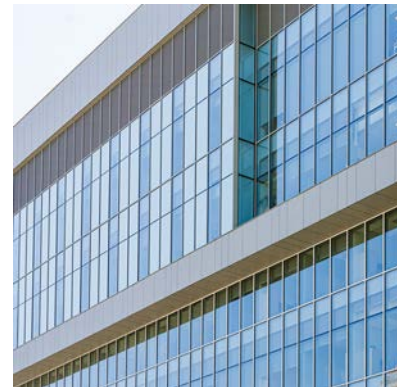
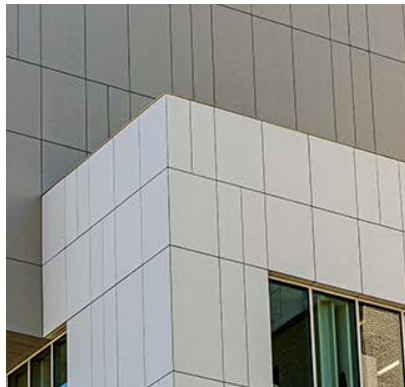
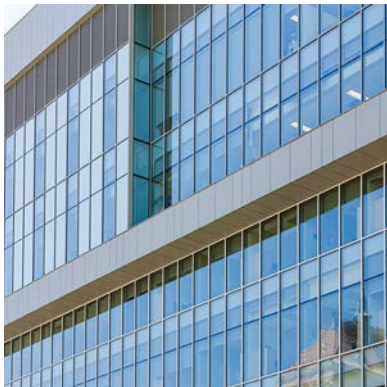


FIBER CEMENT RAINSCREEN

SUNY Downstate – Brooklyn, NY

Large Format Swisspearl Façade for SUNY Downstate Medical



The New Academic Research Complex for the School of Public Health at SUNY Downstate is a design by Ennead Architects. The building is composed of three "stacked" boxes, of which two dramatically sit atop V-shape supports.

Adjustable sub-framing was the key to this successful facade installation. The Alpha Hci.10 sub-framing system with adjustable brackets by ECO Cladding allowed the Swisspearl® fiber cement panels to be easily installed with definitive symmetry. ECO Cladding brackets with 1.5" of adjustability can adjust easily to accommodate in-the-field tolerances, making it easy for various trades to work together to create perfect lines.

System: Alpha Hci.10

Panel Type: Swisspearl®

Architect: SHoP Architects

