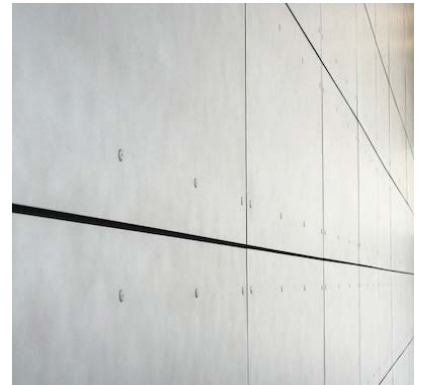
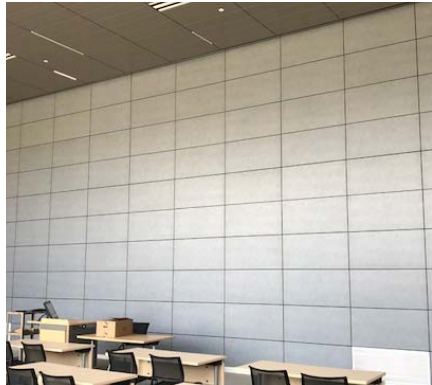


SWISSPEARL® FIBER CEMENT RAINSCREEN

RIC Gaige Hall – Providence, RI

A perfect combination of function and design.



LLB Architects were tasked with adding function and design to Gaige Hall on the campus of Rhode Island College. During the rehab - the center of the building received a new entrance area that incorporated Swisspearl® panels on the interior. The large format panels added a wonderful backdrop.

Swisspearl® panels were also used to screen HVAC systems on the roof top.

Panel Type: Swisspearl®

Architect: LLB Architects

888-826-8453

CLADDING CORP

THE 1ST NAME IN RAINSCREEN