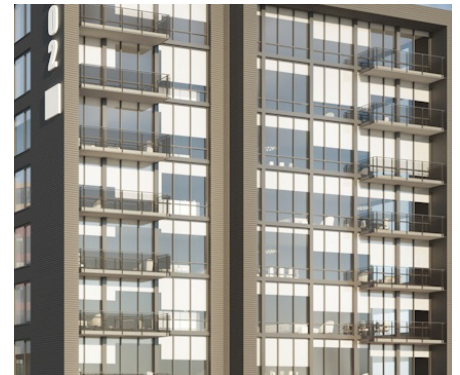


202 Washington Gateway – Washington, D.C.

Swisspearl Panels Power a NoMa Landmark at DC's Sharpest Corner



Located at the prominent site at the northern tip of NoMain Washington DC, this project is set to become a landmark in the area. The triangular site, formed by the intersection of New York and Florida Avenues, showcases three buildings that complete the block perimeter and form a motor court within. Cladding Corp is providing Swisspearl panels for this project, ensuring high-quality and visually stunning exterior cladding. Swisspearl panels are known for their durability, versatility, and aesthetic appeal, making them the perfect choice for this innovative development.

Panel Type: Swisspearl®
System: Cladding Corp Subframing System
Architect: SK+I Architecture

888-826-8453

CLADDING CORP

THE 1ST NAME IN RAINSCREEN