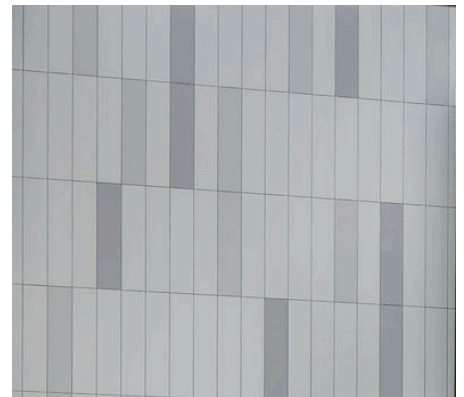


SWISSPEARL® FIBER CEMENT RAINSCREEN



Sandy Spring Friends School – Sandy Spring, MD

A distinct architectural design to complement a new upper school campus



Sandy Springs Friends School hired [Stantec](#) - Arlington to design their new upper school. The team selected Swisspearl to create a stunning vertical application that is both subtle and confident. Students and teachers will be greeted to a contemporary design that complements the school's campus. This environmentally friendly building, incorporated an ECO Cladding subframing system and has multiple shades of white and grey fiber cement panels.

Panel Type: [Swisspearl®](#)
System: [ECO Cladding Hci.10](#)
Architect: Stantec

CLADDING CORP

THE 1ST NAME IN RAINSCREEN

07012020