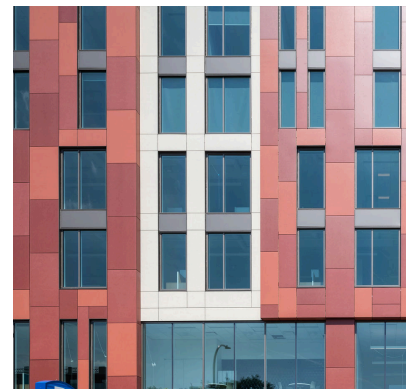
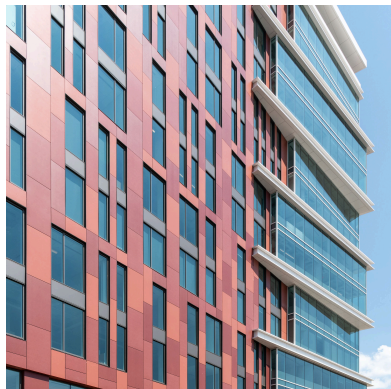
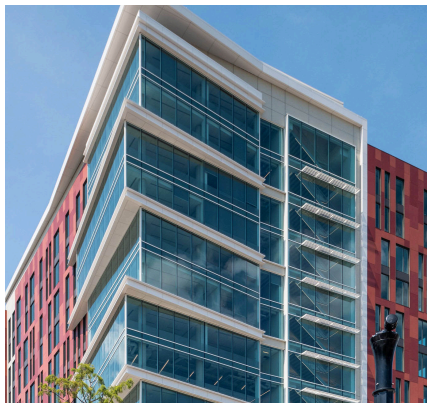
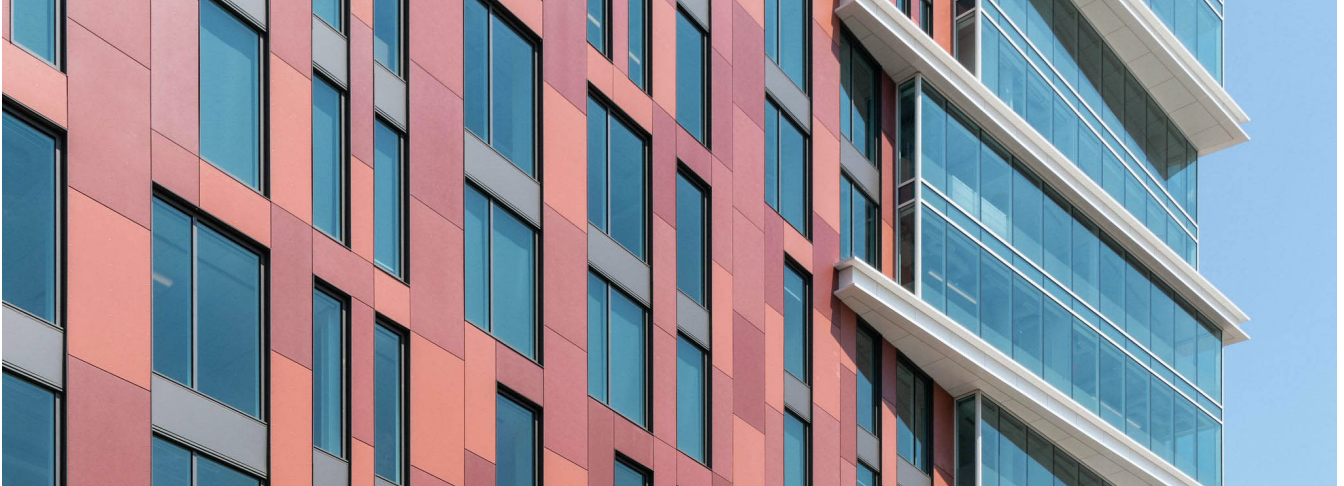


## SWISSPEARL® FIBER CEMENT RAINSCREEN



### Wheaton Government Center – Wheaton, MD

*A sophisticated & contemporary façade for a new Government Center*



[Gensler-DC](#) design team has created a new skyline anchor to downtown Wheaton, Maryland. Using Swisspearl's expansive color palette, the architectural team has creatively designed a sophisticated and contemporary Government Center. The building's new fiber cement facade of reds and tan complement the windows. The Swisspearl panels provide a range of colors and panel sizes, to harmonize with the varying window sizes. ECO Cladding's aluminum subframing system was used to meet engineering and thermal code requirements.

Panel Type: [Swisspearl®](#)

System: [ECO Cladding Hci.10](#)

Architect: Gensler

**888-826-8453**

**CLADDING CORP**

THE 1<sup>ST</sup> NAME IN RAINSCREEN

07012020