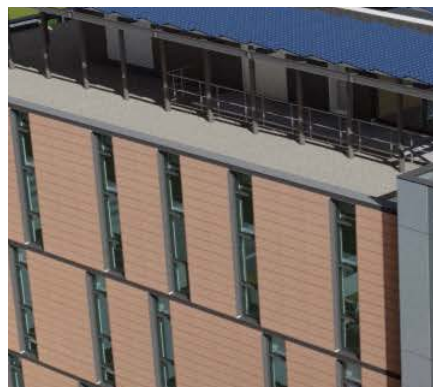




## TERRA COTTA RAINSCREEN

# Dartmouth College Dana Hall - Hanover, NH

*An energy-efficient design transformation for Dartmouth's Dana Hall*



Located at the heart of 1960s medical school on Dartmouth's north campus - The Dana Hall project was designed by [Leers Weinzapfel Associates](#). This design was based around an existing structure and the choice of high R-Value Terra5 terracotta rainscreen panels, a solar panel canopy and triple-glazed windows created a building with a low embodied energy that approaches net zero energy usage. Cladding Corp's Terra5 terracotta panels offer a large range of red tones for the design team to select the perfect match.

Panel Type: [Terra5](#)

System: [ECO Cladding Vci.45](#)

Architect: Leers Weinzapfel Associates

888-826-8453

**CLADDING CORP**

THE 1<sup>ST</sup> NAME IN RAINSCREEN

V110119