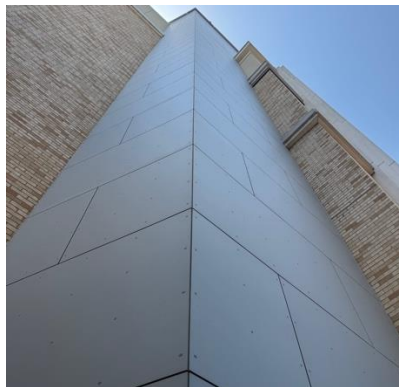


SWISSPEARL® FIBER CEMENT RAINSCREEN



Amon G. Carter Stadium at TCU– Fort Worth, TX

Blending Legacy with Innovation: Swisspearl Panels Elevate TCU's Amon G. Carter Stadium Renovation



Originally constructed in 1928 and expanded in 1930, Amon G. Carter Stadium at Texas Christian University (TCU) is a storied venue that has seen several updates over the years. The latest redevelopment, led by HKS Architects with structural support from Thornton Tomasetti, focused on a comprehensive renovation of the East Side stands and interior spaces.

As part of the updated exterior, Swisspearl high-density fiber cement (HDFC) panels were selected in a light grey finish and installed as a ventilated rainscreen system. These panels enhance the stadium's performance by improving weather resistance, durability, and energy efficiency, while also delivering a sleek, modern aesthetic that complements the stadium's historic architecture.

Panel Type: Swisspearl®

Architect: HKS Architects

888-826-8453

CLADDING CORP

THE 1ST NAME IN RAINSCREEN

V061025