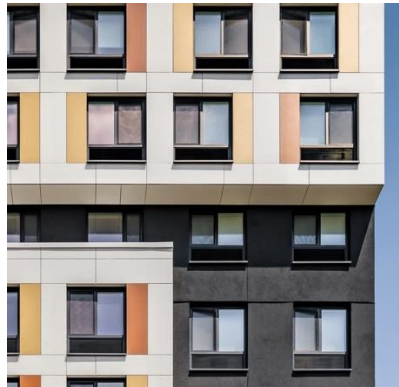


# SWISSPEARL® FIBER CEMENT RAINSCREEN



## Betances VI Affordable Housing – Bronx, NY

*Innovative Affordable Housing with Durable High-density Fiber Cement Facade*



Betances VI, a 15-story, 98,000 sq. ft. affordable housing development in the Bronx's Mott Haven area, offers 101 residential units including 30 for formerly homeless individuals. Designed by Think! and developed by Lemle & Wolff with Alembic Community Development and The Bridge, the building features a vibrant facade of approximately 28,000 sq. ft. of Swisspearl high-density fiber cement panels supplied by Cladding Corp in multiple colors. The exterior cladding is supported by ECO Cladding's adjustable-depth Hci.10 visible-fastened subframing system, combining durability with striking architectural appeal.

Panel Type: Swisspearl®

System: Hci.10 System

Architect: Think!

**888-826-8453**

**CLADDING CORP**

THE 1<sup>ST</sup> NAME IN RAINSCREEN

V081225