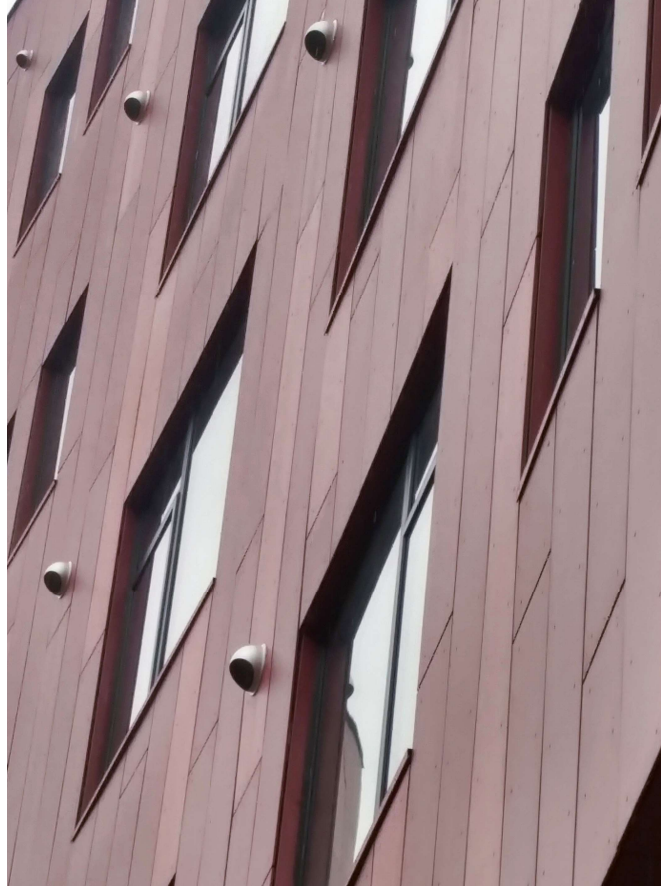


SWISSPEARL® FIBER CEMENT RAINSCREEN



# Jewish Residential Services

*Energy-efficient Rainscreen for Affordable Housing In Pittsburgh*



Forty Eighty Architecture did a remarkable job designing JRS Lofts at the intersection of Murray Avenue and Forward Avenue in Pittsburgh. There are a total of 33 units with a mix of one- and two-bedroom units in this six-story structure consisting of semi-assisted living apartments and office spaces.

Swisspearl® fiber cement panels were installed vertically, using ECO Cladding's VZ.10 system which includes a 1" vertical Zee profile to create the building's convex shape and used different color panels to give this building a one of a kind design.

System Type: ECO Cladding

Panel Type: Swisspearl®

Architect: Forty Eighty Architecture

Installer: Easley Rivers



888-826-8453

**CLADDING CORP**

THE 1<sup>ST</sup> NAME IN RAINSCREEN