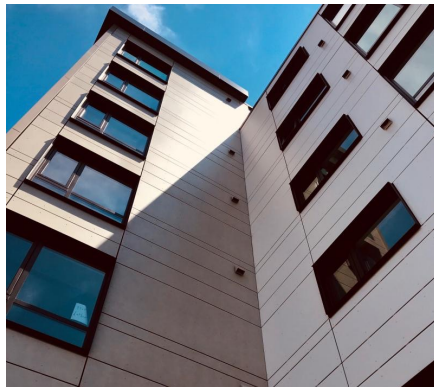


SWISSPEARL® FIBER CEMENT RAINSCREEN



The Cohen Residences at 112 Center St – Brookline, MA *An exciting transformative renovation of a historic high-rise building*



The Cohen Residences is an exciting transformative renovation 98-unit high-rise in Brookline's Coolidge Corner neighborhood. Davis Square Architects teamed up with Hebrew SeniorLife for renovations of this 1976 building which has become a much more modern and colorful change to the area. As the building had not been renovated since its construction in 1976, the scope of work included system upgrades, a full replacement of the 12-story façade, new and improved units, and common areas, and HC accessibility upgrades. The existing brick façade was removed and replaced with areas of masonry block, aluminum panels, and fiber cement panels. Cladding Corp provided Swisspearl fiber cement panels for the exterior facade installation.

Panel Types: Swisspearl®
Architect: David Square Architects

888-826-8453

CLADDING CORP

THE 1ST NAME IN RAINSCREEN

08012019