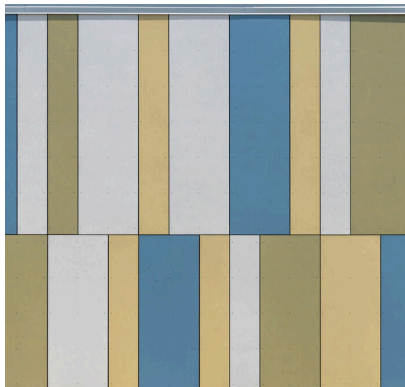


Houston Elementary School – Washington, DC

A contemporary & colorful design for the restoration of Houston Elementary School



[Cox Graae Spack Architects](#) and DC District Schools selected Swisspearl's fiber cement panels for the restoration of Houston Elementary School. Four colors, vertical layout, random widths were no problem for Swisspearl's easily fabricated panels. Creative abounds and the playfulness of this school yard is contemporary, crisp and timeless. ECO Cladding adjustable aluminum subframing allowed the installers to deliver perfect symmetry.

Panel Type: [Swisspearl®](#)

System: [ECO Cladding VZ.10](#)

Architect: Cox Graae Spack Architects

888-826-8453

CLADDING CORP

THE 1ST NAME IN RAINSCREEN