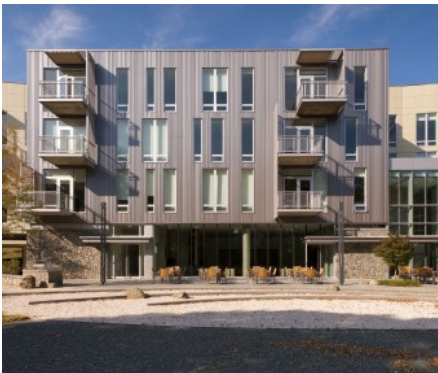


Fiber Cement Rainscreen

**SWISSPEARL**

# Howard Hughes Medical Institute Housing– Ashburn, VA

*Swisspearl Panels Define HHMI Housing Campus*



Designed by WDG Architecture, the Howard Hughes Medical Institute Housing in Ashburn, VA is a purposebuilt residential campus created to accommodate medical professionals from around the globe. Swisspearl® fiber cement panels were a key element in the design, used extensively to establish a unified and visually engaging exterior. The panels' rich textures and versatile color options contribute to the architectural character, while the ventilated rainscreen system enhances building performance by boosting durability and thermal efficiency. With its blend of form and function, this long-lasting, low-maintenance solution aligns with the innovation and high standards of the Howard Hughes Medical Institute.

**Panel Type:** Swisspearl®  
**System:** Cladding Corp Subframing System  
**Architect:** WDG Architecture

**888-826-8453**

**CLADDING CORP**

**THE 1<sup>ST</sup> NAME IN RAINSCREEN**

V010626