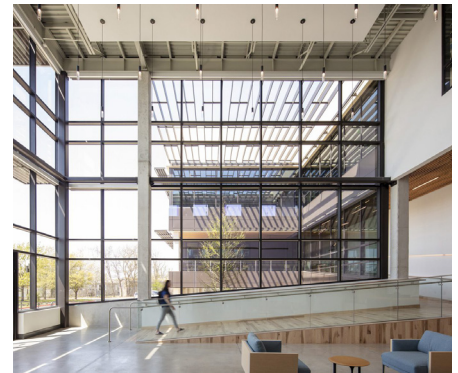


Fiber Cement Rainscreen

**SWISSPEARL**

# Professional Contract Services Inc. Headquarters



PCSI—a nonprofit supporting veterans and individuals with disabilities—partnered with Corgan to design a unified headquarters that reflects their mission of inclusion. The new facility emphasizes “design for all,” with spaces tailored to a wide range of physical and cognitive needs. The exterior features Swisspearl HDfC panels installed on ECO Cladding’s engineered subframing system, combining durability, accessibility, and forward-thinking design in a single, cohesive structure.

**Panel Type:** Swisspearl®  
**System:** Cladding Corp Subframing System  
**Architect:** Corgan

888-826-8453

**CLADDING CORP**

THE 1<sup>ST</sup> NAME IN RAINSCREEN

V020526