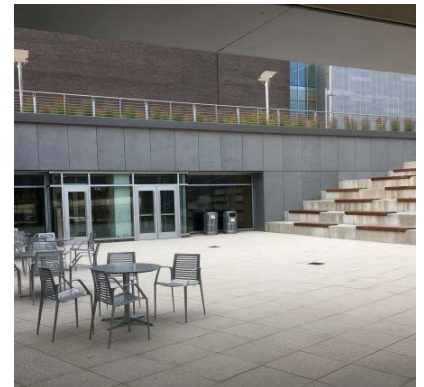


SUNY Purchase – Center for Media, Film & Theater – Purchase, NY
A Modern Greyscale Accent Façade for SUNY's Media, Film & Theater Center



[FXFOWLE Architects](#) designed SUNY Purchase's new 75,000 SF Center for Integrated Technology & Learning as a combined center for the School of Theater Arts, the School of Film & Media Studies, and other related arts programs. The new facility will add an entry pavilion and gathering space for students. Natural light will fill the new Center, providing both transparency and contrast to highlight the surrounding architecture and consequentially increasing visibility for the Film, Theater, and Media programs. The screen wall design feature incorporated two layers for walls, using Swisspearl fiber cement panels as accent panels in greyscale. The exterior layer has a perforated metal screen.

Panel Type: Swisspearl®
System: [ECO Cladding](#) Hci.11
Architect: FXFOWLE Architects

888-826-8453

CLADDING CORP

THE 1ST NAME IN RAINSCREEN