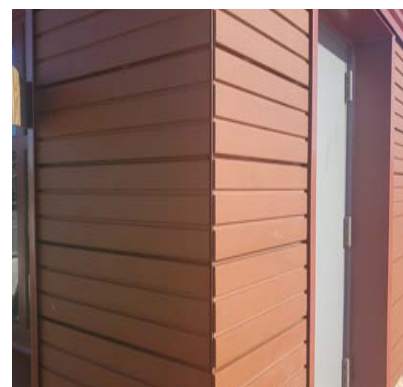
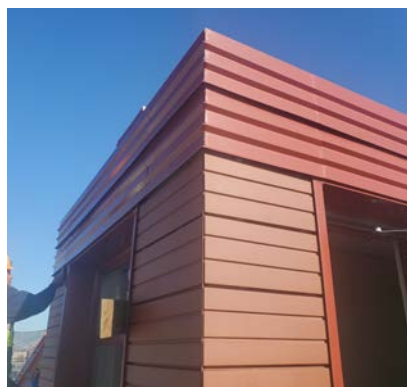


TERRA COTTA RAINSCREEN

Sotomayor Houses – Bronx, NY

A comprehensive roof rehabilitation featuring a terracotta parapet



Designed by [Nelligan White Architects](#), Sotomayor Houses, is a sprawling New York City Housing Authority (NYCHA) development in the Bronx. The development is made up of 28 seven-story buildings arranged across a 30-acre campus. Completed in 1955, the 1,496-apartment development has an estimated 3,497 residents. The comprehensive rehabilitation consists of selective masonry, Cladding Corp's Terra5 terracotta panels for the parapet and full roof replacement, as well as a complete replacement of windows, plumbing, fixtures, finishes, security and site sewage. An ECO Cladding Vci.22 subframing system was utilized to support the terracotta rainscreen panels at the parapet locations.

Panel Type: Terra5

System: [ECO Cladding Vci.22](#)

Architect: Nelligan White Architects

888-826-8453

CLADDING CORP

THE 1ST NAME IN RAINSCREEN