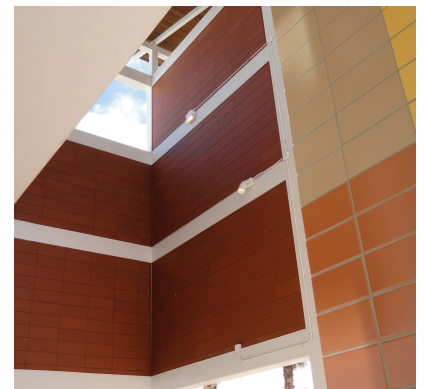


TERRA COTTA RAINSCREEN

University Mall - Tampa, FL

A Bold Terracotta Façade for the Transformation of a Community Anchor



University Mall, previously University Square Mall, is a shopping mall located near the University of South Florida, just north of the city limits of Tampa on Fowler Avenue. The property is located just east of I-275. [OmniPlan Architects](#) incorporated Terra5 panels as a maintenance-free accent at the entrances of the shopping mall. One early example of terracotta cladding in South Florida, this project provided a feature cladding at an affordable pricepoint to add visual appeal to the pedestrian entrances of University Mall.

Panel Type: [Terra5](#)

System: [ECO Cladding V0.22](#)

Architect: OmniPlan Architects

888-826-8453

CLADDING CORP

THE 1ST NAME IN RAINSCREEN

V110119