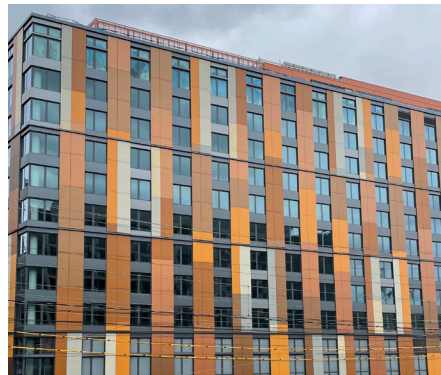


The Morrow Hotel- Washington, DC



Part of the larger Armature Works redevelopment in Washington, DC's NoMa district, The Marrow Hotel brings refined hospitality to a reimagined industrial site. Designed by Shalom Baranes Associates Architects, the project sits atop a shared podium structure that elevates it above the adjacent Amtrak rail lines. The façade features Swisspearl HDPC panels, supported by ECO Cladding subframing and distributed through Cladding Corp, delivering a high-performance, visually striking rainscreen envelope. The hotel contributes to the area's transformation with active ground-floor retail, rooftop amenities, and proximity to a future pedestrian tunnel linking directly to the NoMa/Gallaudet Metro station.

Panel Type: Swisspearl®
System: Cladding Corp Subframing System
Architect: Shalom Baranes Associates Architects

888-826-8453

CLADDING CORP

THE 1ST NAME IN RAINSCREEN