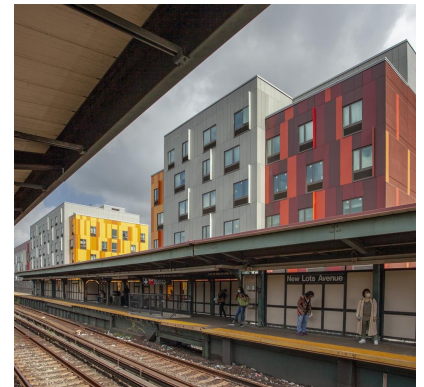


FIBER CEMENT RAINSCREEN

Van Sinderen Plaza – Brooklyn, NY



A Colorful and Playful Take on a new Brooklyn Residential Development



Architecturally, the façade for this new mixed-use residential project in Brooklyn is colorful and sculptural, providing increased visual interest to the repetitive nature of each building in the development. The design team at Gluck+ selected our Swisspearl® Fiber Cement Rainscreen panels for the architectural fiber cement on the project, drawing from the expansive variety of colors and finishes to create this colorful and playful facade. The portrait orientation of the large-format fiber cement panels, staggered in seemingly random patterns, creates visual appeal for large volume stacked block shapes that define the stories. For the design team, the promise of the long-term performance of Swisspearl® Facades was the tipping point for selecting superior quality panels for this project.

Panel Type: Swisspearl®
Architect: Gluck+

888-826-8453

CLADDING CORP

THE 1ST NAME IN RAINSCREEN

05012019