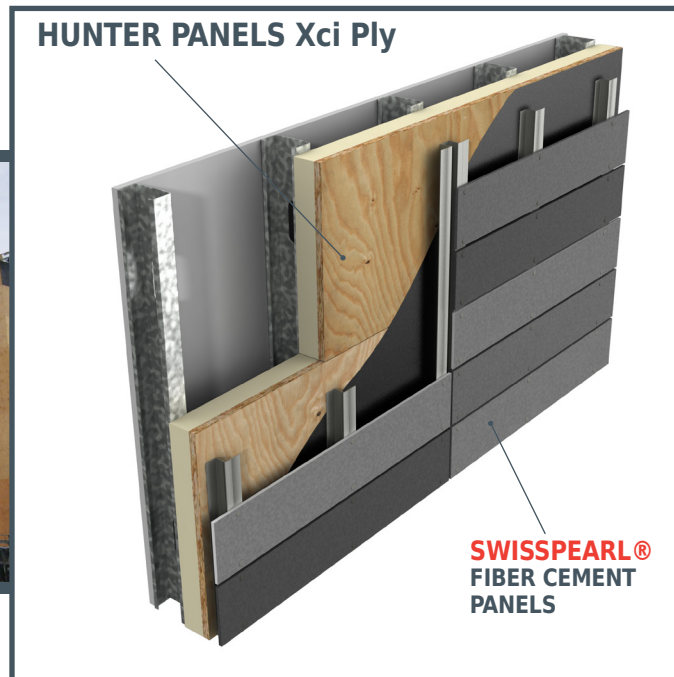


Cladding Corp and Hunter Panels Xci Polyiso

A Continuous Insulation Solution for Exterior Wall Applications



CLADDING CORP
THE 1ST NAME IN RAINSCREEN

888.826.8453
www.claddingcorp.com



888.746.1114
www.hunterpanels.com

A NEW APPROACH

For the first time, Hunter Panels, innovators in polyiso rigid insulation, and Cladding Corp, North America's rainscreen solution provider, have developed a complete fiber cement rainscreen wall solution that addresses all aspects of the building envelope using the leading fiber cement cladding panels on the market today - **SWISSPEARL®**.

THE COMPLETE C.I. SOLUTION

Meeting the most current ASHRAE 90.1, IECC, IBC and IRC standards is one of the most critical requirements for designers and installers alike. Hunter Xci Ply's energy efficient rigid insulation panel, coupled with an engineered SWISSPEARL® drained and back-ventilated rainscreen assembly provides a complete continuous insulation (ci) solution that allows maximum installation flexibility and industry-leading performance.

Hunter Panels Xci Ply

DESCRIPTION

Hunter Xci Ply is an energy efficient rigid insulation panel composed of a closed cell polyisocyanurate foam core bonded to a premium performance coated glass facer on one side and 5/8" or 3/4" fire treated plywood on the other. It is designed for use in commercial wall applications to provide continuous insulation and cladding attachment substrate within the building envelope.

FEATURES AND BENEFITS

- Polyiso offers increased R-value per inch vs mineral fiber, XPS or EPS options
- Designed for use in continuous insulation to assist in meeting the most current ASHRAE 90.1, IECC, IBC and IRC standards
- A superior combination of high insulating properties and mechanically attachable surface
- Manufactured with NexGen Chemistry: Contains no CFCs, HCFCs, HFCs, is Zero ODP, and has virtually no GWP
- Incorporates APA-TECO Rated Exposure 1 Fire Treated Plywood
- Provides improved dimensional stability and fire performance

APPLICATIONS

- Provides continuous insulation (ci) for standard wood frame, FRT wood frame, steel stud, CMU and concrete exterior wall constructions
- Compatible with SWISSPEARL® fiber cement panels and SWISSPEARL® rainscreen attachment assemblies.
- Optimal substrate for mechanically attaching cladding materials
- Suitable for many commercial wall assemblies

PANEL CHARACTERISTICS

- ASTM C 1289 Type V made with Type II Class 2 foam
- Panel dimensions are 48" x 96"
- Multiple substrate types available: 5/8" or 3/4" Fire Treated Plywood

Hunter Xci Ply Thermal Values		
Thickness* (in)	Thickness* (mm)	R-Value
1.6	41	6.8
2.1	53	9.8
2.6	66	12.9
3.1	79	16.1
3.6	91	19.3

Thermal values as per ASTM C 518 in accordance with ASTM C 1289.

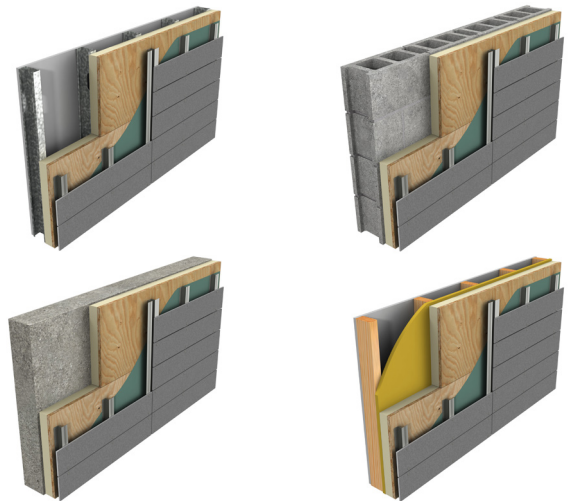
*Thicknesses calculated with 5/8" plywood

COMPLIMENTARY PRODUCTS

The Hunter Panels and Cladding Corp partnership delivers a single source rainscreen cladding wall assembly - including the connections of the fiber cement system to the Xci Ply panels and to the backup wall.

CODE COMPLIANCE AND NFPA 285

The combined Hunter Xci Ply and SWISSPEARL® wall assembly can meet ASHRAE 90.1, IBC and IRC standards, and can be used together within numerous NFPA 285 compliant assemblies. Contact Hunter Panels for more details.



Hunter Xci Ply Physical Property Data Chart

polyiso foam core only

Property	Test Method	Value
Compressive Strength	ASTM D 1621	20 psi* min. (138 kPa, Grade 2)
Dimensional Stability	ASTM D 2126	2% linear change (7 days)
Moisture Vapor Permeance	ASTM E 96	<1 perm (57.5ng/(Pa·s·m²))
Water Absorption	ASTM C 209	< 0.1% volume
Service Temperature		-100° to 250° F (-73°C to 122°C)
Resistance to Mold	ASTM D 3273	Passes (10)

*Also available in grade 3 (25 psi)



For more than 30 years, the Swiss Research and Development teams have continuously expanded their unique expertise regarding core, coloration and application of high-end fiber cement composite façade panels. These huge technological advances are the backbone of the Swiss quality.

SWISSPEARL® air cured fiber cement panels are produced in modern state of the art facilities in Niederurnen (Switzerland) and Vocklabruck (Austria) operated with low energy and high environment consciousness. The proprietary processes pioneered by Switzerland with special surface finishes, ensure optimal behavior and durability of the fully compressed panels.



DESCRIPTION

SWISSPEARL® facades combine boundless diversity of design and long-lasting functional reliability, for the highest living standards. SWISSPEARL® panels are installed in accordance with the ultimate technology of uninterrupted rear ventilation. This fully developed and proven cladding system effectively protects the building structure and with it the whole building from the elements. The panels are rot resistant, incombustible and virtually maintenance free.

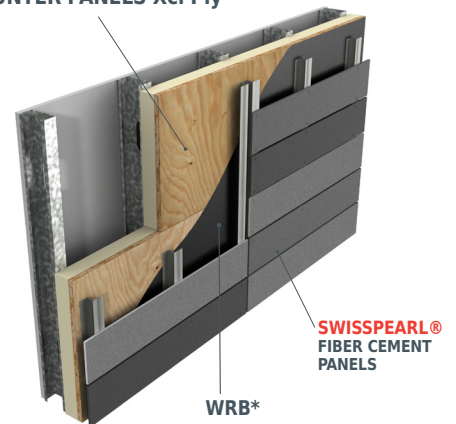
COMPATIBILITY

With various formats in large panels, planks, lap siding and shingles, SWISSPEARL® provides an extensive range of design options, all in maintenance-free finishes. Pairing these fiber cement panels with a SWISSPEARL® subframing system and Hunter's Xci Ply gives both designers and installers a cost effective wall to achieve both thermal and engineering needs, compared to complete stud wall assemblies.

FASTENING

Several factors are involved in the proper fastening of SWISSPEARL® panels and SWISSPEARL® vertical rails to Hunter Xci Ply. Please consult Cladding Corp or Hunter Panels for specific information regarding detailing and fastener type.

HUNTER PANELS Xci Ply



* A vapor permeable barrier is required over the exterior face of Xci Ply. Please contact Hunter Panels for more information.



706 Gliddings Avenue - Annapolis, MD / Grid Architects



Sempre Energy Trading Company - Stamford, CT / Roger Ferris + Partners

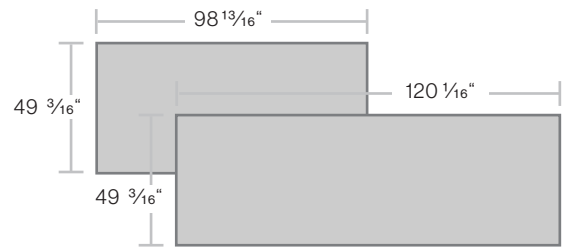


Bridgestone Training Center - Akron, OH / SoL Harris / Day Architects

LARGE FORMAT

what they need: a face, individuality, character, texture, color and very importantly, a high effective protective layer.

SWISSPEARL® LARGO means freedom of design without limits. The large-format LARGO panels give facades

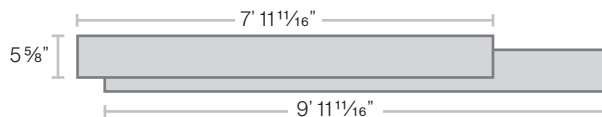


Thickness	Dimensions	Color Lines Available *
5/16" (8mm) and 1/2" (12mm)	49-3/16" x 98-13/16" 49-3/16" x 120-1/16"	Carat, Reflex, Avera, Nobilis, & Zenor for 5/16" Carat, Reflex, & Noblis for 1/2"

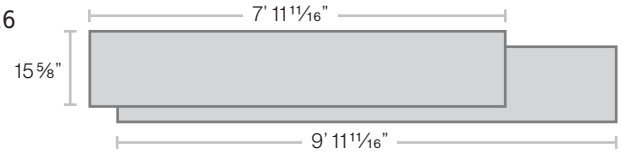
PLANK

SWISSPEARL® LINEARIS panels are ready-made LARGO panel strips, for installing with open joints. Whether monochrome or multicolored, equal or varying format lengths, with continuous or offset joints - there is an immense scope of different combinations possible.

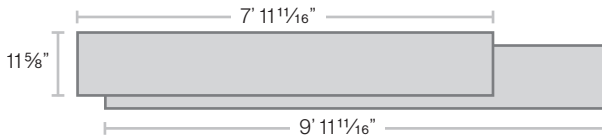
Linearis 6



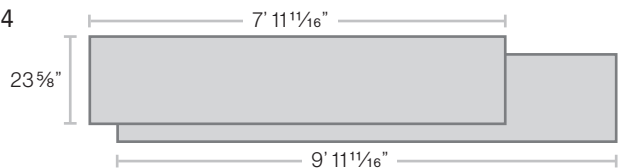
Linearis 16



Linearis 12



Linearis 24



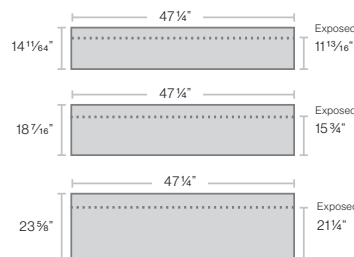
Thickness	Dimensions	Color Lines Available *
5/16" (8 mm)	Linearis 6: 5-5/8" x 7' 11-11/16" or 9' 11-11/16" Linearis 12: 11-5/8" x 7' 11-11/16" or 9' 11-11/16" Linearis 16: 15-5/8" x 7' 11-11/16" or 9' 11-11/16" Linearis 24: 23-5/8" x 7' 11-11/16" or 9' 11-11/16"	Carat, Reflex, Avera, Nobilis, & Zenor

CLINAR

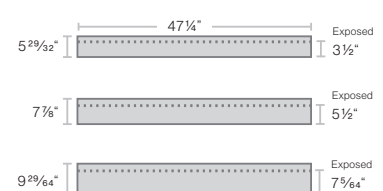
SWISSPEARL's® CLINAR medium and small format overlapping panels provide the flexibility to create a vibrant, unique façade that can be installed easily. CLINAR CLIP, (attached with mounting clips,) CLINAR 6 and CLINAR 4 panels can be installed with multiple patterns of continuous or staggered vertical seams. CLINAR is part of the unique repertoire of SWISSPEARL® and are available in different sizes and colors. ^

Thickness	Dimensions	Color Lines Available *
Clinar Clip - 15/64" (6mm)	14-11/64" x 47-1/4" 18-7/16" x 47-1/4" 23-5/8" x 47-1/4"	Nobilis
Clinar 6 - 15/64" (6mm)	5-29/32" x 47-1/4" 7-7/8" x 47-1/4" 9-29/64" x 47-1/4"	Noblis
Clinar 4 - 1/8" (4mm)	11-13/16" x 35-7/16"	Noblis, Carat ^

Clinar Clip



Clinar 6



Clinar 4



* Please Refer to SWISSPEARL® Delivery Program for color section.