

Terracotta Rainscreens



Products, systems, and solutions



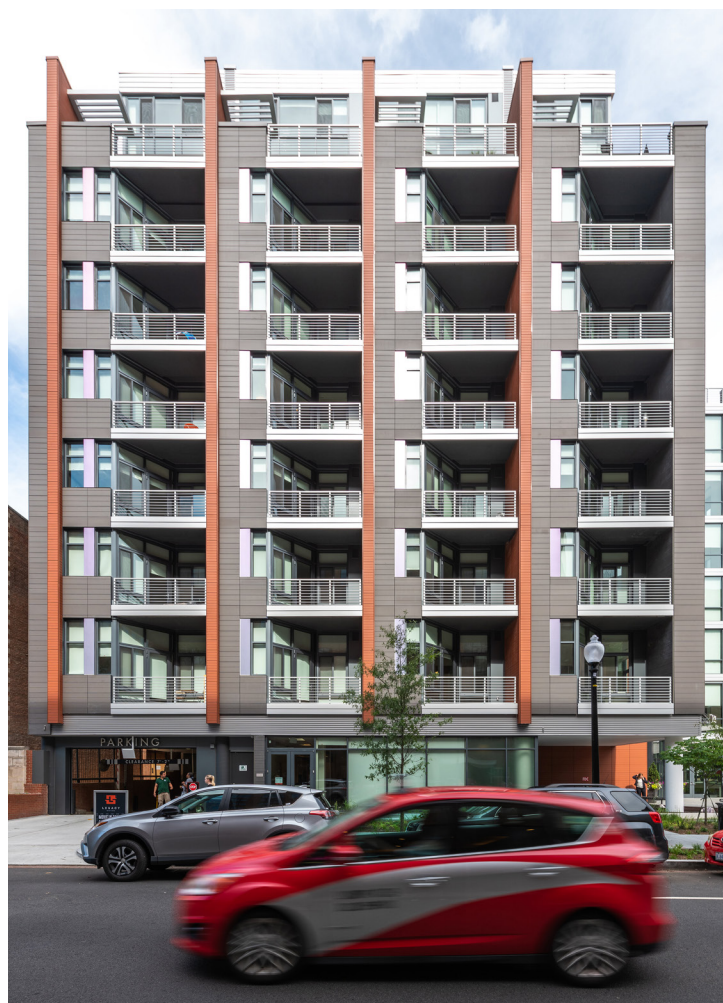


Terra⁵ Terracotta Rainscreens

For centuries, kiln-fired terracotta has stood as one of the most enduring and beautiful building materials. In the modern era, it has re-emerged as a warm, timeless medium for sustainable rainscreen façades.

Terra5 by Cladding Corp represents a **single-source rainscreen solution**, uniquely addressing the complete wall assembly—from sheathing to terracotta tile—with high-quality finishes and a fully engineered wall system. Backed by over 25 years of leadership in North America, Cladding Corp has pioneered terracotta rainscreen design, advocating for drained and back-ventilated (DBV) systems that ensure both aesthetic distinction and long-term performance.

As one of the most referenced terracotta rainscreen providers in North America, we combine design freedom with engineering precision. Every project is supported by a full system analysis, considering thermal performance, penetrations on the air barrier, adjustability without shims, and ease of installation. Our solutions integrate world-class terracotta manufacturing with robust ECO Cladding sub-framing systems—delivering walls that are as technically sound as they are visually striking.



1255 22nd Street NW - Washington, DC / MFTA Architecture

Introducing the Terracotta Collection (TC)

The next generation of terracotta façade design is here. With **five new collections**, Terra5 expands the creative possibilities for architects, designers, and builders alike.

◀ **TC Plank**

◀ **TC Design**

◀ **TC Block**

◀ **TC Shingle**

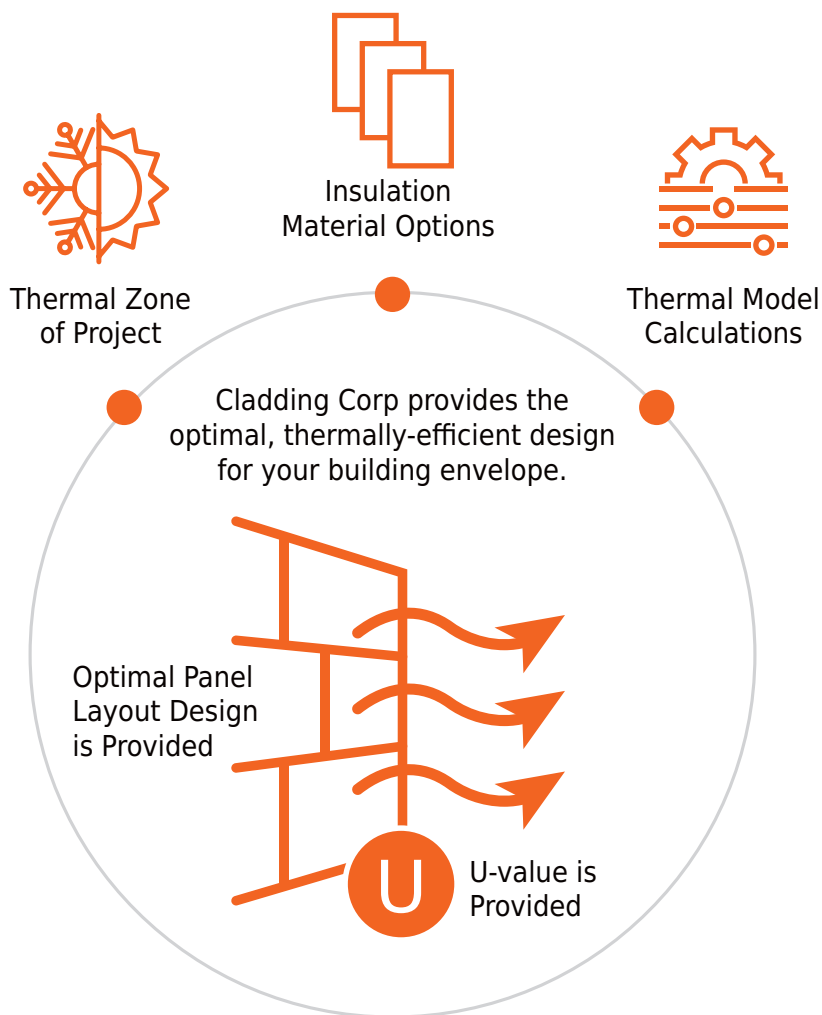
◀ **TC Shade**

Each collection embodies a unique design philosophy—ranging from modular systems that scale with monumental clarity to custom profiles crafted for one-of-a-kind visions. Together, they form a cohesive suite of terracotta solutions that adapt to new construction and retrofit projects of every scale.

Advantages

Thermal Modeled Performance

Our non-continuous, thermally broken wall brackets have been thermally modeled by RDH to help designers achieve the intended U-value for their wall and demonstrate what insulation material thickness is required to meet or exceed ASHRAE standards and energy code requirements. To assist the design community, multiple thicknesses of the three most common insulation materials (mineral wool, polyiso exterior boards, and polyiso spray foam) were modeled. Using our thermal modeling calculator, tile and sub-framing layout can be determined and the corresponding wall's U-value can be provided. Thermal performance just got a whole lot simpler.



Rapid Clip™

Installers love Terra5 thanks to our category-leading terracotta tile clips, **Rapid Clip™**. You can work at a fast or rapid 'clip' as you install our tiles thanks to this unique, engineered tile clip that creates installation efficiencies and is easy to install.



Engineered System

Wall consultants love Terra5's fully-engineered system in which the entire wall is designed to accommodate project wind loads, seismic loads, building slab-to-slab deflections, and thermal movements of materials.



Affordable Quality

Building owners love that with Terra5 Rainscreens you don't have to sacrifice quality with affordability. Coupled with the ability to span greater distances due to the engineered sub-framing, our systems save on material and labor costs.

Lightweight. Economical. Elegant.

TCPlank by Cladding Corp is a terracotta rainscreen solution designed for projects where façade weight and budget are critical considerations. This slimline tile format delivers the warmth and timeless beauty of terracotta in a cost-effective package—making it an ideal choice for schools, housing, and retrofit projects that demand both durability and design appeal.

Despite its thinner profile, **TCPlank** maintains the impact resistance of a double-skinned tile, redefining the rules of terracotta cladding in North America. Its consistent thickness ensures straightforward detailing and compatibility with ECO Cladding’s engineered sub-framing systems.



Designed for Flexibility. Built for Value.

TCPlank tiles provide a versatile design palette with standard heights of 300mm, 400mm, 450mm, and 500mm and lengths up to 1225mm. These uniform sizes simplify layout and fabrication while offering architects the freedom to create bold horizontal or vertical expressions.

Paired with a horizontal rail system, **TCPlank** is uniquely suited for conditions where cavity depth is limited—such as urban retrofits or tight building envelopes. With 16 standard colors and a refined range of sizes and shapes, **TCPlank** expands creative possibilities while keeping projects on budget. Its ease of installation reduces on-site labor time, driving further project savings while maintaining the elegance of natural terracotta.

With **TCPlank**, projects no longer need to choose between cost, performance, and design impact. It’s the economical rainscreen solution that extends the reach of terracotta to every budget.

MODULES	HEIGHTS	AVAILABLE
	300mm	X
	400mm	X
	450 mm	X
	500mm	X
	Large Piece	>1225mm

WEIGHT: 5.84 lbs/sf

Distinctive, Flexible Palette of Colors.

Available in 16 standard colors, **TCPlank**, **TCDesign**, and **TCShade** offer a diverse palette of classic terraotta colors.



Versatile. Expressive. Architectural.

TCDesign by Cladding Corp is the ultimate expression of flexibility in terracotta rainscreen façades. With its range of sizes, **TCDesign** gives architects the freedom to create façades that are both timeless and contemporary.

Available in standard heights of 200mm, 300mm, 400mm, 450mm, 500mm, and 600mm, and standard lengths up to 1525mm, **TCDesign** adapts effortlessly to any façade concept. Panels can be installed in both landscape and portrait orientations, allowing for endless design combinations that emphasize proportion, rhythm, and texture.



Limitless Customization.
Lasting Performance.

TCDesign is available in 16 standard colors with the option for custom colors and finishes, ensuring that every project achieves a truly distinctive look. Beyond color, **TCDesign** can be fabricated with custom profiles and patterns—from grooves and waves to custom shapes that transform terracotta into a sculptural element.

The combination of expressive design freedom, high-quality manufacturing, and engineered ECO Cladding sub-framing makes **TCDesign** a rainscreen solution that elevates both aesthetic vision and building performance.



MODULES

HEIGHTS	THIN	STANDARD
200mm	X	X
300mm	X	X
400mm	X	X
450mm	X	
500mm	X	
600mm	X	X
Large Piece	>1525mm	>1525mm

WEIGHT: 6.76 lbs/sf 9.83 lbs/sf

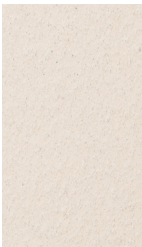
Available in 16 standard colors



Latte



Sesame



Coastal
White



White
Madrid



Silk Grey



Platinum



Iron Grey



Basalt

TCBlock Design Freedom in Terracotta

Big Scale. Bold Design. Lasting Terracotta.

TCBlock by Cladding Corp brings a powerful new dimension to terracotta façades with its oversized block format and modular precision. Engineered for bold, modern architecture, **TCBlock** merges the natural beauty of kiln-fired terracotta with the strength and durability needed for today's demanding building envelopes.

Perfect for projects seeking dramatic scale and clean geometry, **TCBlock** provides a striking, contemporary design solution that maintains the timeless character of terracotta. It can be installed in stacked or running bond patterns.

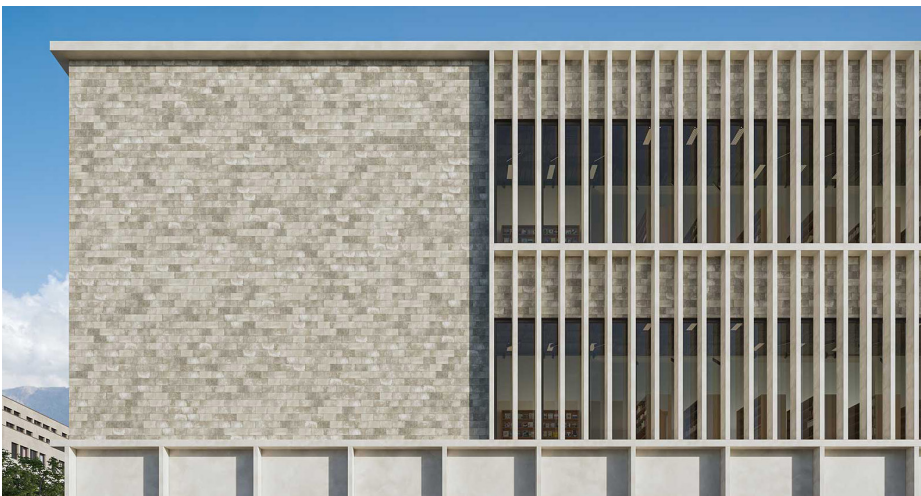
Oversized Format. Modular Precision

With an 225mm x 400mm tile size, **TCBlock** delivers a distinctive façade module that stands apart from conventional terracotta formats. Its engineered track system ensures precise alignment and ease of installation, making it suitable for both new construction and retrofit projects.

Available in six curated design colors, **TCBlock** offers a focused palette that highlights form, rhythm, and scale without compromising durability. Whether used as a dominant façade material or as part of a mixed-material composition, **TCBlock** elevates architectural design with confidence and clarity.

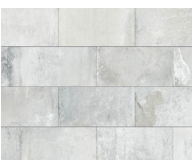


FORMAT 21mm x 225mm x 400mm
WEIGHT 5.73 lbs/sf

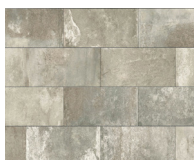


Distinctive Colors. Confidence and Clarity.

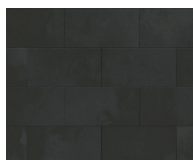
TCBlock is available in 6 curated color blends.



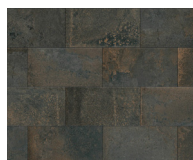
Antique Grey
EK 1023



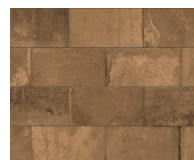
Antique Moss
EK 1024



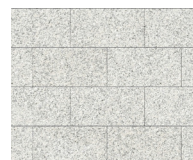
Athracite
EK 1060



Black Oxid
EK 1027



Tampico
EK 1038



White Granite
EK 1059

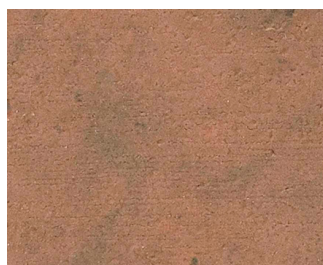
TCShingle Texture Through Repetition

Classic or Prime. Timeless by Design.

- **TCShingle** brings rhythm and texture to terracotta façades through the elegance of repeated tile patterns. Offered in two distinct shingle formats — **CLASSIC** and **PRIME** — **TCShingle** gives designers the flexibility to achieve both subtle and bold architectural expressions while maintaining an easy-to-install and affordable model.

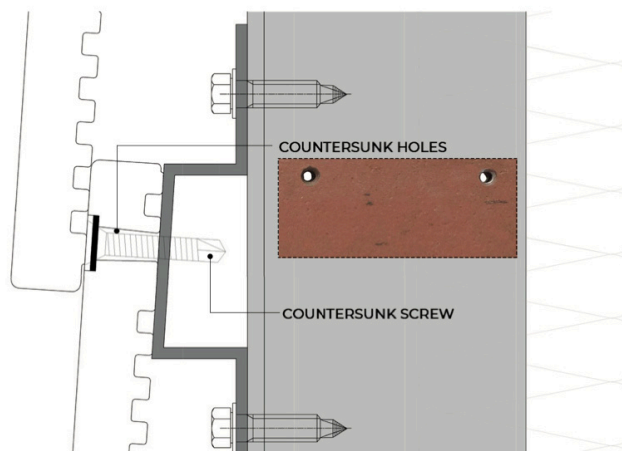
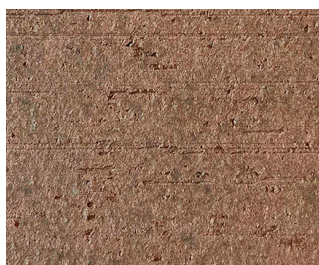
CLASSIC

FORMAT 225mm x 400mm
WEIGHT 6.35 lbs/sf



PRIME

FORMAT 225mm x 500mm
WEIGHT 7.17 lbs/sf



The “**CLASSIC**” features a uniform, smooth texture that delivers a consistent, homogeneous finish across the entire façade.

- **TCShingle CLASSIC**: 225mm x 400mm x 13mm tile, refined in scale and ideal for traditional shingle aesthetics.

The “**PRIME**” offers a pronounced, tactile texture that can be felt to the touch, creating a visually distinctive and dynamic façade finish.

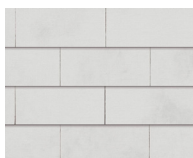
- **TCShingle PRIME**: 225mm x 500mm x 28mm tile, engineered to create a more pronounced, horizontal joint line for stronger visual impact.



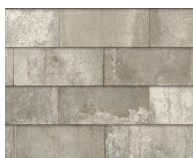
Varied Colors. Infinite Possibility.

Available in 7 curated color blends, **TCShingle** provides a warm, earthy palette that highlights the natural beauty of terracotta. For projects seeking a unique signature, tiles can also be custom glazed, or inkjet printed, opening the door to unique designs, patterns, and textures.

Whether used in a uniform grid or as part of a mixed-material façade, **TCShingle** offers the perfect balance of craft, repetition, and performance—turning the building envelope into a canvas of rhythm and depth.



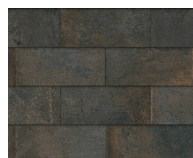
Light Grey
RK-EK 1009



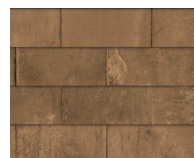
Antique Moss
RK-EK 1024



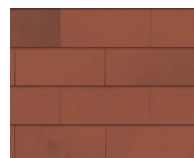
New Black
RK-EK 1051



Black Oxid
RK-EK 1027



Tampico
RK-EK 1038



Red Flamed
RK-EK 1005



White September
RK-EK 1014

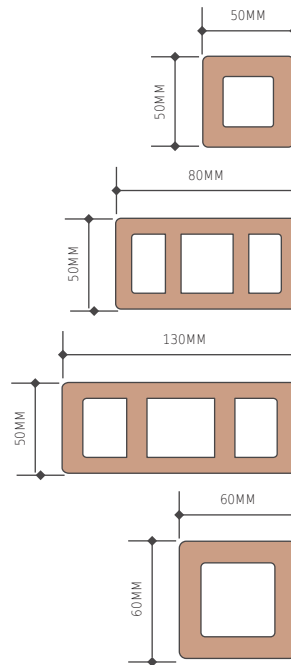
Sunscreens

As sustainable architecture continues to call on sunscreen systems as an integral part of the solution for energy-efficient design, natural clay sunscreen products are gaining increased prominence over other louver systems to shade glazing and curtain wall sections. The ideal solution for applications with large portions of glass and glazing, terracotta sunscreens can provide natural thermal comfort for the interior while still letting in needed natural light.

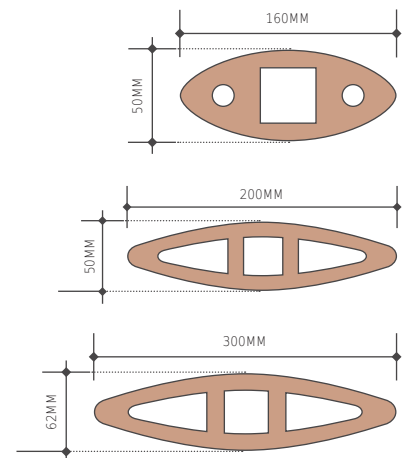
TCShade sunscreens come in 4 classic baguette sizes and 3 different louvers. The sunscreens are available in lengths up to five feet. Custom shapes are also available as well in our standard range of 16 colors and also glazed color options.

TCShade sunscreens have no backside and can be seen from any angle. They are automatically self-cleaning in the rain, and have a simple replacement procedure, if needed.

BAGUETTES



LOUVERS



Mission College Student Center - Santa Clara, CA / LIONAKIS



Juniper Networks - Sunnyvale, CA / RMW Architecture



The Learning Commons at St. John's University - Collegeville, MN / CSNA Architects



College of Marin Academic Building - Kentfield, CA / Mark Cavagnero Associates



Lauritzen Outpatient Center - Omaha, NE / RDG Planning & HOK Architects



U of Arkansas Bookstore & Garland Ave. Parking Garage - Fayetteville, AR / HLKB Architecture