

# Porcelain Rainscreens



Products, systems, and solutions





## Economical, light-weight, and pollution-resistant performance

Made of natural raw materials, our porcelain-grade ceramic panels are through-body colored, light-weight, and economical. Pollution-resistant and maintenance-free, our porcelain panels, when combined with an engineered subframing design approach, offer an elegant, high-performance rainscreen solution at an exceptional value.

Ceramic5 is a single-source rainscreen solution that incorporates rainscreen design principles and offers a diverse range of colors and format sizes, engineered for project-specific criteria. Ceramic5's unalterable colors are unaffected by light and weathering, making these panels the ideal choice for high-traffic, pollution-prone environments. With Ceramic5 systems, the entire assembly weighs less than 6 lbs/sf - a light-weight alternative to natural stone for both new construction or retrofit.

Our team evaluates the thermal impact of the rainscreen on the building, the implications of penetrations on the air-barrier, the need for internal adjustability without shims, the ease of installation, and provides a fully-engineered wall design.



Porsgrunn Church - Porsgrunn, Norway / Espen Surnevik and Trodahl Architects

## 25+ years of experience

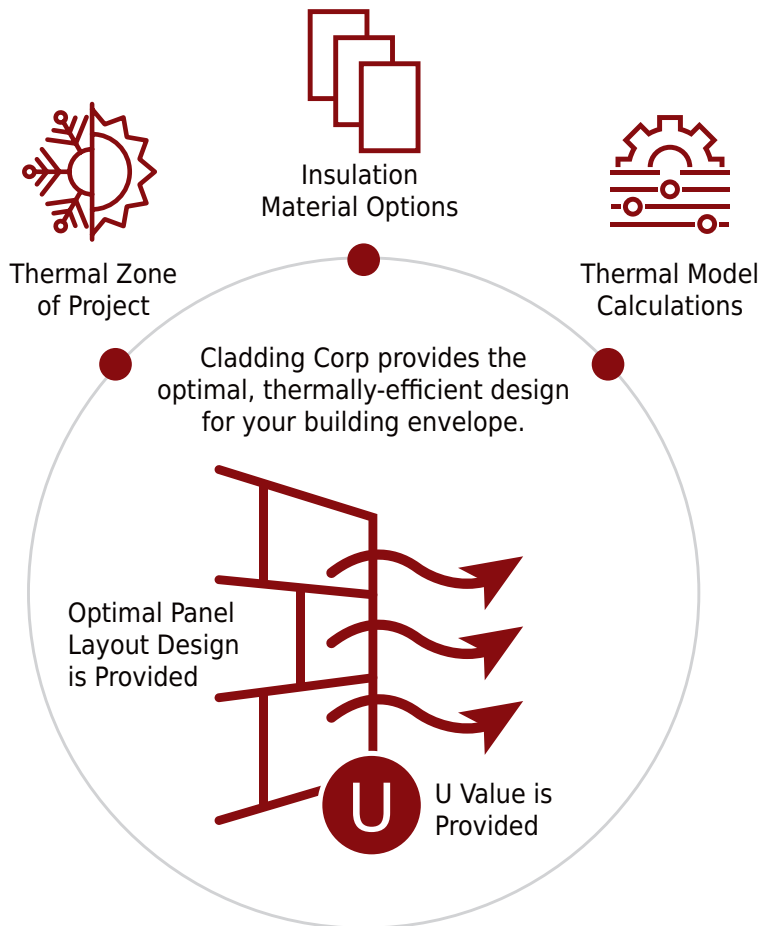
Cladding Corp serves as North America's rainscreen solution provider. In all that we do, our goal is to master the art and science of proper drained and back-ventilated (DBV) rainscreen design. For over 25 years, we have pioneered porcelain rainscreen in the United States advocating for a systems-based solution for the cladding panels and support structure that consider all the design and structural criteria of the project. Our commitment is not only to the design aesthetics of your building but also to its long-term performance.



# Advantages

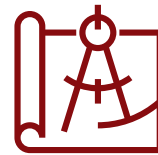
## Thermal modeled performance

Our non-continuous, thermally broken Alpha brackets have been thermally modeled by Morrison Hershfield to help designers achieve the intended U-value for their wall and demonstrate what insulation material thickness is required to meet or exceed ASHRAE standards. To assist the design community, multiple thicknesses of the three most common insulation materials (mineral wool, polyiso exterior boards, and polyiso spray foam) have been modeled. Using our thermal modeling calculator, tile and subframing layout can be determined and the corresponding wall's U Value can be provided. Thermal performance just got a whole lot simpler.



## Rapid Clip

Installers love Ceramic5 thanks to our category-leading tile clips, **Rapid Clip™**. You can work at a fast or rapid 'clip' as you install Ceramic5 tiles thanks to this unique, engineered tile clip that creates installation efficiencies and is economical to install.



## Engineered System

Wall consultants love Ceramic5's fully-engineered system in which the entire wall is designed to accommodate project wind loads, seismic loads, building slab-to-slab deflections, and thermal movements of materials. All systems designed to comply with AAMA 509 requirements.



## Affordable Quality

Building owners love that with Ceramic5 Rainscreens you don't have to sacrifice quality with affordability. Coupled with the ability to span greater distances due to the engineered subframing, our systems save on material and labor costs.





400 K Street NW - Washington, DC / Davis Carter Scott



# Sizes & Colors

With some of the most referenced rainscreen projects in North America, Cladding Corp is proud to be at the forefront of the growth of ceramic rainscreen market. Our Ceramic5 lineup of colors and textures are some of the most sought-after aesthetics for modern rainscreen design.

- Economical, easy-to-install rainscreen assemblies
- Pollutant resistant panels – ideal for high-traffic environments
- Unalterable colors that are not affected by light or weathering
- Light-weight, high-performance alternative to natural stone and fiber concrete

## STANDARD SIZES

| Series          | 300mm x 600mm<br>(12" x 24") | 600mm x 600mm<br>(24" x 24") | 600mm x 1200mm<br>(24" x 48") |
|-----------------|------------------------------|------------------------------|-------------------------------|
| Stone Series    | X                            | X                            | X                             |
| Concrete Series | X                            | X                            | X                             |
| Clay Series     | X                            | X                            | X                             |
| Metallic Series | X                            | X                            | X                             |

| Timber Series                     | 200mm x 1200mm<br>(8" x 48") | 300mm x 2400mm<br>(12" x 96") |
|-----------------------------------|------------------------------|-------------------------------|
| JP 01, JP 02, JP 03, JP 04, JP 05 | X                            | X                             |
| NN 01, NN 02, NN 03, NN 04, NN 05 | X                            | N/A                           |

## Stone Series

Our stone-effect ceramic collection is ideal for high-performance exterior applications. Our standard color palette boasts 20 nature-inspired colors.



## Concrete Series

Our neutral, exceptionally versatile smooth concrete collection for exterior cladding. Includes 10 neutral, concrete-inspired colors.



## Clay Series

Warmth and depth. Inspired by earthy mineral clay deposits from around the world... Our standard color palette has 11 earth-inspired colors.



## Metallic Series

Our aged metals series for exteriors, scratched & colored by the passage of time. Includes 11 metallic looking finishes.



## Timber Series

This series captures the essence of aged, material wood for high performance exteriors. Our standard color palette includes 10 nature-inspired woodgrains.



(Multiple tiles shown to illustrate range of color variation.)



Del Lago Academy - Escondido, CA / Baker Nowicki Design Studio

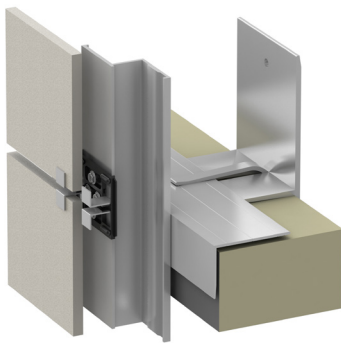


# Systems

We support the highest grade of porcelain panels with a complete, engineered sub-framing system. In partnership with ECO Cladding, we have developed the below systems to optimize Ceramic5 panel installation and thermal performance. Ceramic5 is perfect for new construction or retrofit applications.

## Alpha Hci.13 - Visible Clip

This subframing system is economical and incorporates a vertical zee rail and **Rapid Clips™**. Panel clips are attached back to vertical zee profiles. Cost-effective visible clip attachment system for ceramic panels with color matched clips that are discreet, especially in the case of multiple story construction.



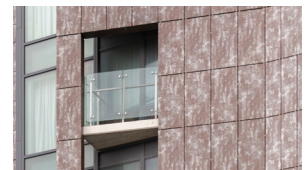
Installing St. John Providence Park Hospital - Novi, MI / NBBJ Columbus

## Panel Layout Options

With Ceramic5 sizes, there is a wide variety of layout options. Our format sizes can be installed in stacked or running bond patterns, both landscape and portrait oriented.



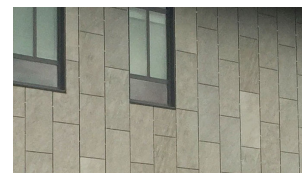
24"x48" Stacked - Landscape



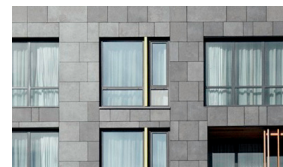
24"x48" Stacked - Portrait



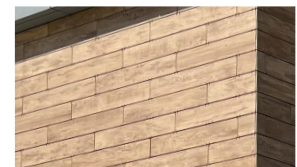
24"x48" Running Bond - Landscape



24"x48" Running Bond - Portrait



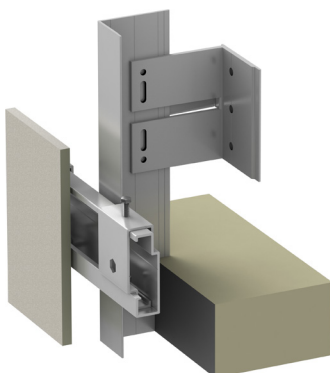
12"x24", 24"x24", 24"x48"  
Varied Running Bond - Landscape



12"x96" Planks  
Running Bond - Landscape

## Alpha Vci.40 - Concealed Anchor

Using an expanding undercut anchor, Ceramic5 panels are hung into place on a horizontal rail system. The back of each panel is pre-drilled using an undercut drill bit to receive the hanger clip and expanding bolt anchor. This is the leading system for concealed mechanical fastening of ceramic and porcelain panels.





## Cladding Corp

Winchester, VA 22603  
Solana Beach, CA 92075

T: (888) 826-8453  
info@claddingcorp.com  
www.claddingcorp.com



Osage Nation Visitors Center - Pawhuska, OK / Collins Woerman



Santa Monica Early Childhood Lab School - Santa Monica, CA / Carde Ten Architects



FNBC Community Bank - Jonesboro, AR / Adrenaline Agency



28th and Canyon Embassy Suites - Boulder, CO / Johnson Nathan Strohe Architects



St. John Providence Park Hospital - Novi, MI / NBBJ Columbus



Del Lago Academy - Escondido, CA / Baker Nowicki Design Studio



North Middlesex RHS - Townsend, MA / SMMA



Quakertown Community High School - Quakertown, PA / The Architectural Studio



Hampton Inn DC Nationals Ballpark - Washington, DC / BBG-BBGM Architects