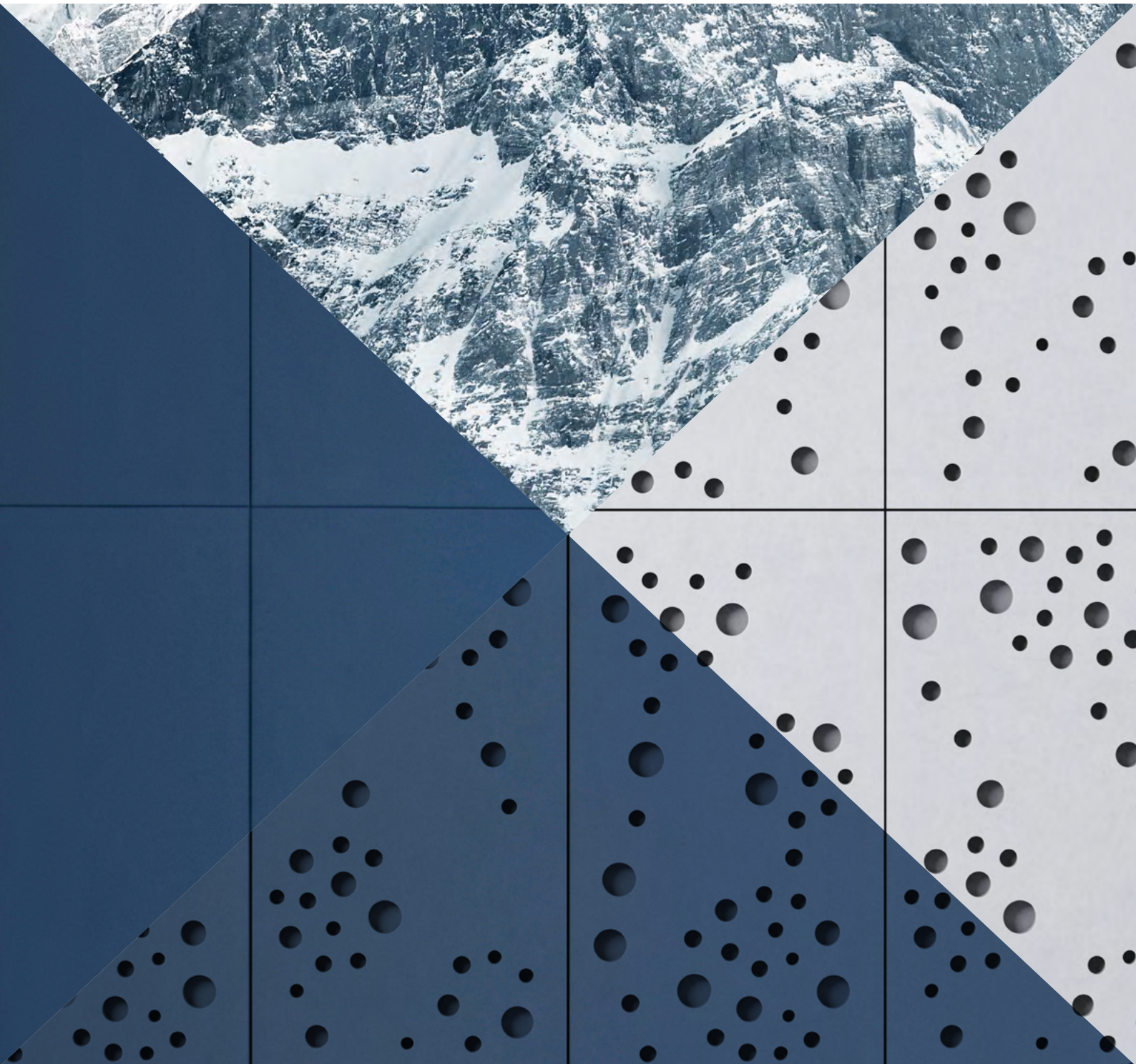


SWISSPEARL

Facades





LARGO - LARGE FORMAT COLOUR RANGE

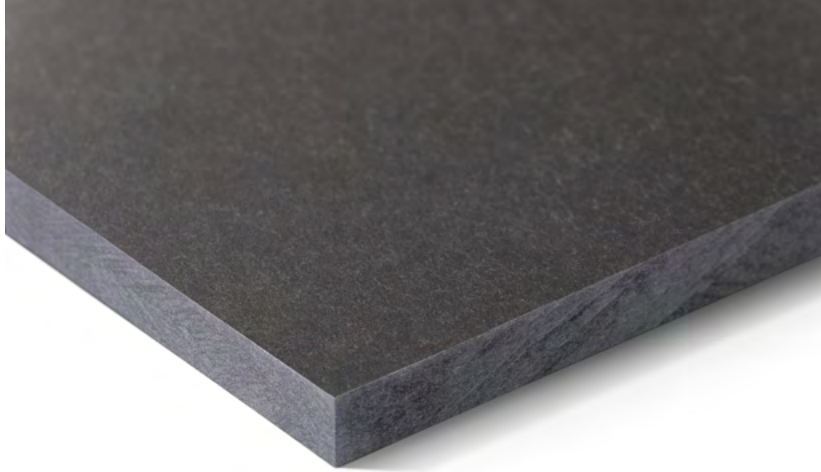


CARAT

Unique natural look and timeless beauty.
The translucent, slightly pigmented surface
adds to its expressive appearance.



CARAT



The naturally dried colour line Carat creates clear expressiveness through a translucent, lightly pigmented surface. The through-colouring of the fibre cement panels creates monolithic and elegant-looking building envelopes.

The 20 shades of the Carat colour line range from light to dark and from cool to warm shades, thus offering a particularly varied colour spectrum. Carat is independent and simple and at the same time offers numerous colour combinations.

Optionally, Carat is also available with a special HR coating that offers greater scratch resistance and protection against heavy soiling and graffiti.



House RnEve, Mönchhof, Austria. Architect: ad2 Architekten, Weiden am See, Austria. Photographer: Meraner & Hauser OHG/SNC, Bolzano, Italy.

Technical data

Panels

The panel is coloured through.
Coating: Translucent lightly pigmented

Panel format

Swisspearl Largo:
Maximum usable format 3050 x 1250 mm,
panel thickness 8 mm and 12 mm

For a detailed summary of the sizing
and colour options, please refer to our
delivery program.

Mounting

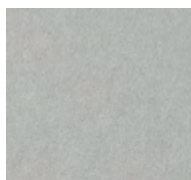
Visible on wooden substructure:
Screw with painted heads

Visible on metal substructure:
Blind rivets with painted heads

Invisible on metal substructure:
Undercut anchors

Technical data

Detailed information can be found in
the DIM – “Design and Installation
Manual Largo”.



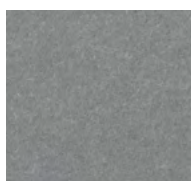
Crystal 8010



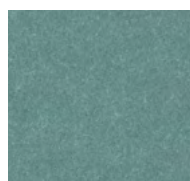
Granite 8060



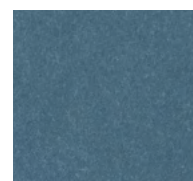
Granite 8061



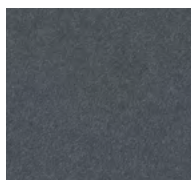
Granite 8062



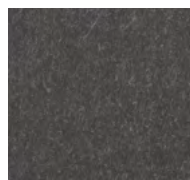
Jade 8053



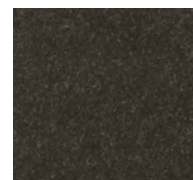
Azurite 8040



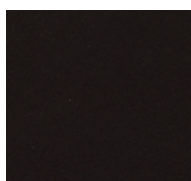
Anthracite 8021



Anthracite 8020



Anthracite 8023



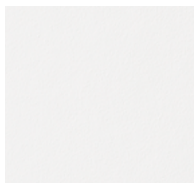
Anthracite 8024

Colours

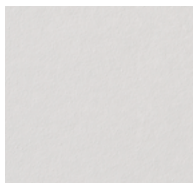
20 standard colours.

Special coating Carat HR (optional)

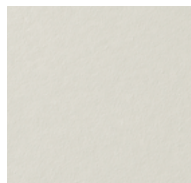
Carat HR (high-resistance) is a special transparent coating that has a high scratch resistance and offers protection against heavy soiling and graffiti. Carat HR is available in all Carat standard colours.



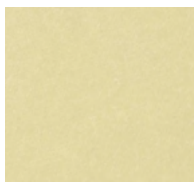
Ivory 8099



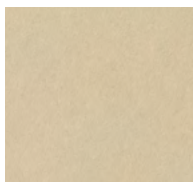
Ivory 8091



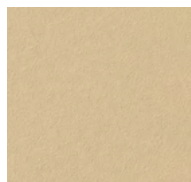
Ivory 8090



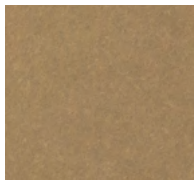
Limestone 8083



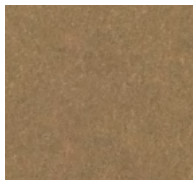
Sandstone 8000



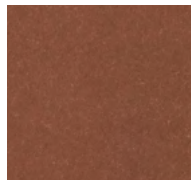
Sandstone 8002



Amber 8075



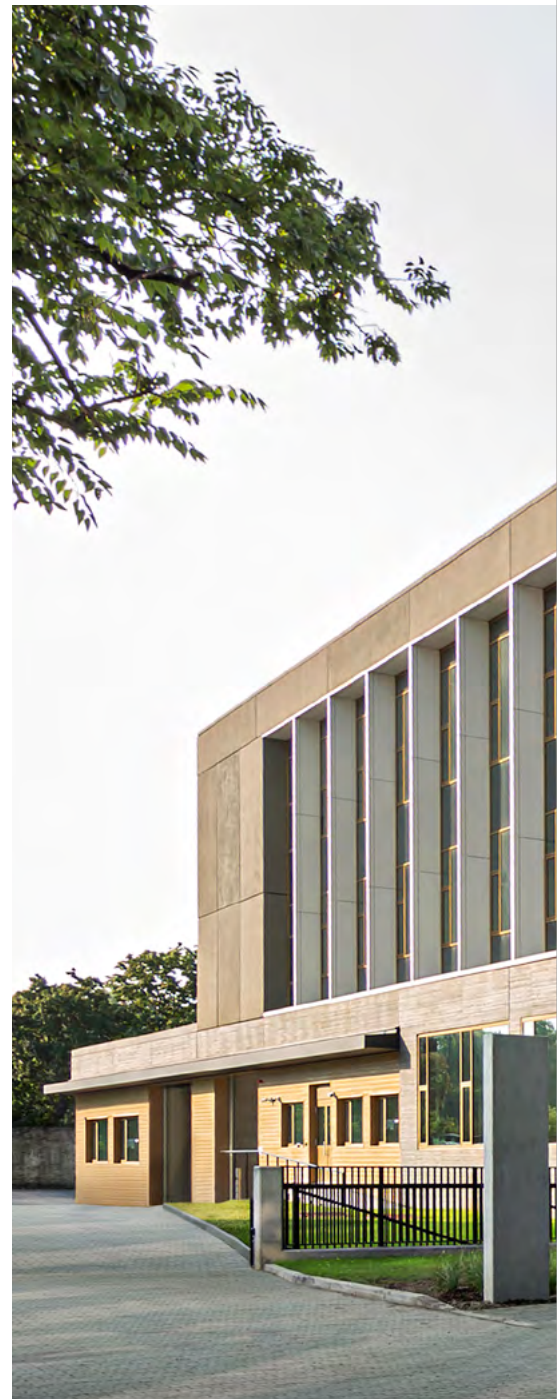
Amber 8074



Coral 8034



Coral 8033





OMRRK National Museum, Budapest, Hungary. Architect: Narmer Építészeti Stúdió, Budapest, Hungary. Photographer: Meraner & Hauser OHG/SNC, Bolzano, Italy.



The OMRRK National Museum in Budapest was planned in an arrangement of four wings on the top two floors, running perpendicular to the main axis of the building. This strategy reduces the size of the building and allows the design of spaces with natural light from two directions. The facades are clad in custom coloured large-format Swisspearl panels.

GRAVIAL

Unique interplay between light and shadow.
The straight, geometrically grooved surface
offers countless possibilities for creating
a special design accent.





GRAVIAL



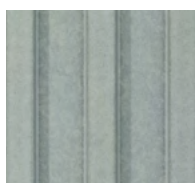
Gravial is a naturally dried fibre cement panel with a linear milled surface structure and translucent coating. Depending on the time of day and the angle of view it creates an impressive play of light and shadow. With the exception of one brown tone, the colour line moves in soft grey tones from white to black.



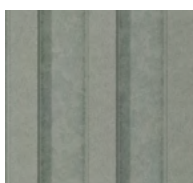
Ivory 3099



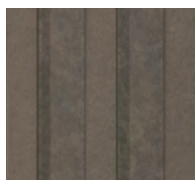
Ivory 3090



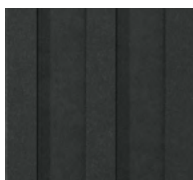
Crystal 125



Granite 624



Amber 723



Anthracite 3020

Technical data

Panels

The panel is coloured through or grey based.
Coating: Translucent pigmented

Panel format

Swisspearl Largo:

Maximum usable format 3050 x 1250 mm, panel thickness 12 mm

For a detailed summary of the sizing and colour options, please refer to our delivery program.

Colours

6 standard colours.

Mounting

Visible on wooden substructure:

Screws with painted heads

Visible on metal substructure:

Blind rivets with painted heads

Invisible on metal substructure:

Undercut anchors

Technical data

Detailed information can be found in the "DIM - Design and Installation Manual Gravial".



Fiches Nord, Lausanne, Switzerland. Architect: Züst Gübeli Gambetti Architektur und Städtebau AG, Zurich, Switzerland. Photographer: Roger Frei, Zurich, Switzerland.

VINTAGO

Naturally authentic, raw, vibrant and unique.
The sanded surface underlines the purity
of the fibre cement panel.

VINTAGO



Vintago is a naturally dried fibre cement panel, which appeals with a sanded and slightly rough surface. Through the sanding process with a rough abrasive grit, the interior and the originality of the fibre cement board is discreetly carried to the outside. The resulting robust texture of the fibre cement panels disrupts homogeneous surfaces without being obtrusive.

Due to its colouration through the mixing of colour pigments into the basic mass of the fibre cement panel, the Vintago colour family is a good choice for special cuts and individual design possibilities for interiors and on the facade.

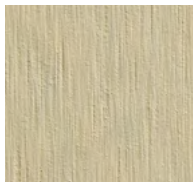
With light and dark shades of gray and brown, a white and a black shade, as well as coloured shades of green, blue and red, the Vintago colour family offers a multi-faceted range. However, the rather cool tones share one thing: they authentically express the structure of the fibre cement created by the sanded character.



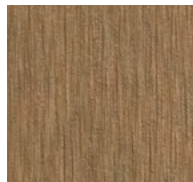
MFH, Zuzwil, Switzerland. Architect: Trunz + Wirth AG, Henau, Switzerland. Photographer: Meraner & Hauser OHG/SNC, Bolzano, Italy.



VI091



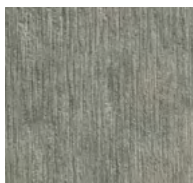
VI001



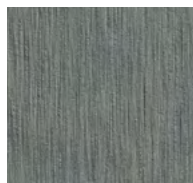
VI071



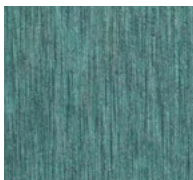
VI011



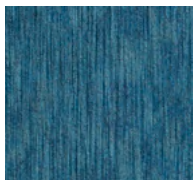
VI100



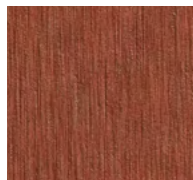
VI061



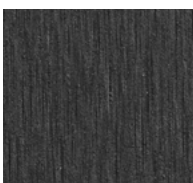
VI050



VI040



VI031



VI021

Technical data

Panels

The panel is coloured through.

Coating: Transparent High-Resistant

Panel format

Swisspearl Largo:

Maximum usable format 3050 x 1250 mm,
panel thickness 8 mm

For a detailed summary of the sizing and colour options, please refer to our delivery program.

Colours

Wide selection with 10 standard colours.

Deviations in the colour shades of the different panels are a natural part of the production properties underlining the vibrant character of the material.

Mounting

Visible on wooden substructure:

Screws with painted heads

Visible on metal substructure:

Blind rivets with painted heads

Invisible on metal substructure:

Undercut anchors

Technical data

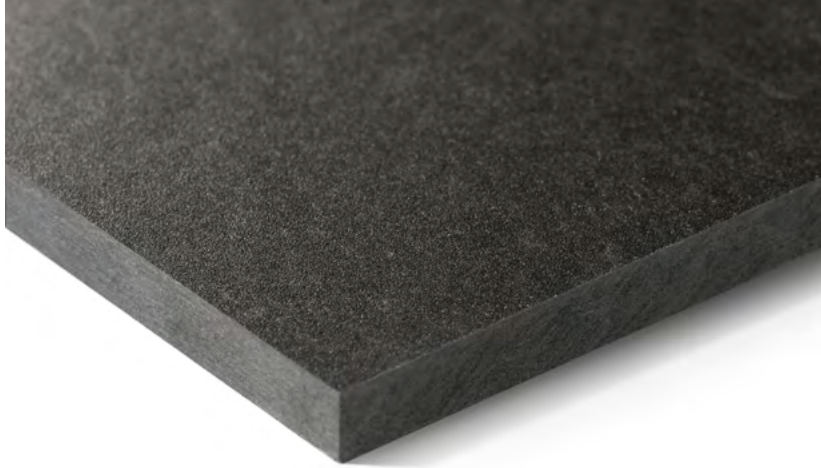
Detailed information can be found in the DIM – “Design and Installation Manual Largo”.

AVERA

Authentic, vibrant appearance.
The transparent coating allows the
original natural appearance of
the fibre cement to shine through.



AVERA

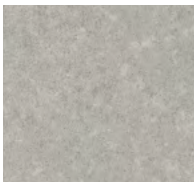


Avera is a naturally dried and through coloured fibre cement panel with a dynamic production process that gives it an unmistakably natural and authentic texture. The colour range around Avera is composed of versatile and combinable shades that ideally bring out the cloudy look of the colour line.

The highly resistant standard coating makes these panels particularly scratch-resistant and protects them from heavy soiling and graffiti. The transparent coating allows the natural appearance of the fibre cement to shine through, creating a lively surface look with varied texture and dynamic colour tones.



House on Haliburton Lake, Ontario, Canada. Architect: +VG, Toronto, Canada. Photographer: David Whittaker Photographer Inc., Toronto, Canada.



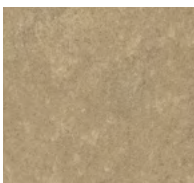
AV 010



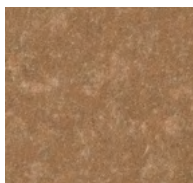
AV 100



AV 060



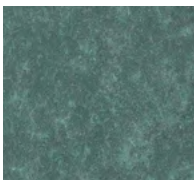
AV 000



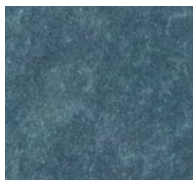
AV 070



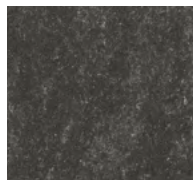
AV 030



AV 050



AV 040



AV 020

Technical data

Panels

The panel is coloured through.

Coating: Transparent High-Resistant

Panel format

Swisspearl Largo:

Maximum usable format 3050 x 1250 mm,
panel thickness 8 mm

For a detailed summary of the sizing and colour options, please refer to our delivery program.

Colours

9 standard colours.

Deviations in the colour shades of the different panels are a natural part of the production properties underlining the vibrant, expressive character of the material.

Mounting

Visible on wooden substructure:

Screws with painted heads

Visible on metal substructure:

Blind rivets with painted heads

Invisible on metal substructure:

Undercut anchors

Technical data

Detailed information can be found in the DIM – “Design and Installation Manual Largo”.

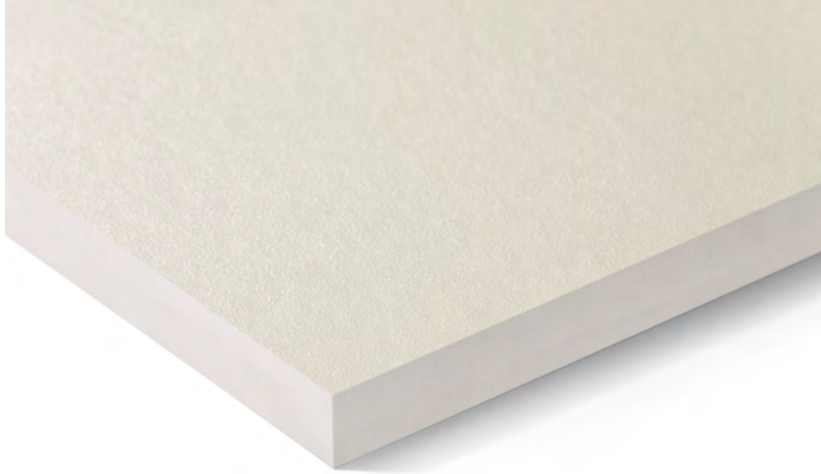


REFLEX

Shiny look with metallic effects. The reflective surface coating gives the panel an expressive and shiny appearance.



REFLEX

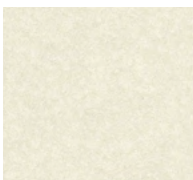


Reflex is a through coloured, naturally dried fibre cement panel with a reflective surface coating, which creates a different return of the light. Depending on the viewing angle, this creates a restrained, shimmering look on the surface.

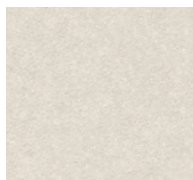
The colour world around Reflex ranges from seven shades of black and grey, each with a slightly green tonality, to two warm white tones and three bronze red-brown tones. With its nuanced reflective pigments, Reflex presents itself with an independent and noble character.



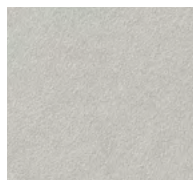
DC International School, Washington, USA. Architect: Perkins Eastman DC, Washington, USA. Photographer: Brycen Fischer, Baltimore, USA.



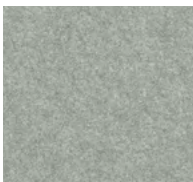
Ivory 4092



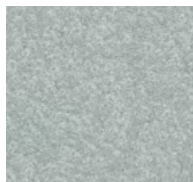
Ivory 4091



Crystal 4111



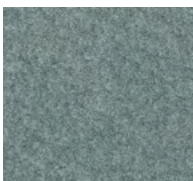
Granite 4161



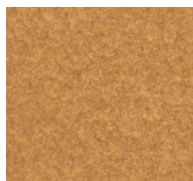
Granite 4162



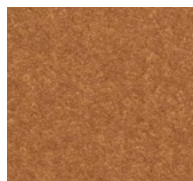
Crystal 4112



Jade 4051



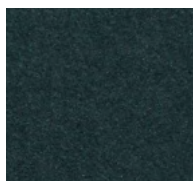
Amber 4071



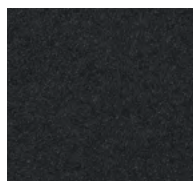
Amber 4072



Coral 4031



Anthracite 4022



Anthracite 4021

Technical data

Panels

The panel is coloured through.

Coating: Iridescent, opaque High-Resistant

Panel format

Swisspearl Largo:

Maximum usable format 3050 x 1250 mm,
panel thickness 8 mm and 12 mm

For a detailed summary of the sizing and
colour options, please refer to our delivery
program.

Colours

12 standard colours.

Mounting

Visible on wooden substructure:

Screws with painted heads

Visible on metal substructure:

Blind rivets with painted heads

Invisible on metal substructure:

Undercut anchors

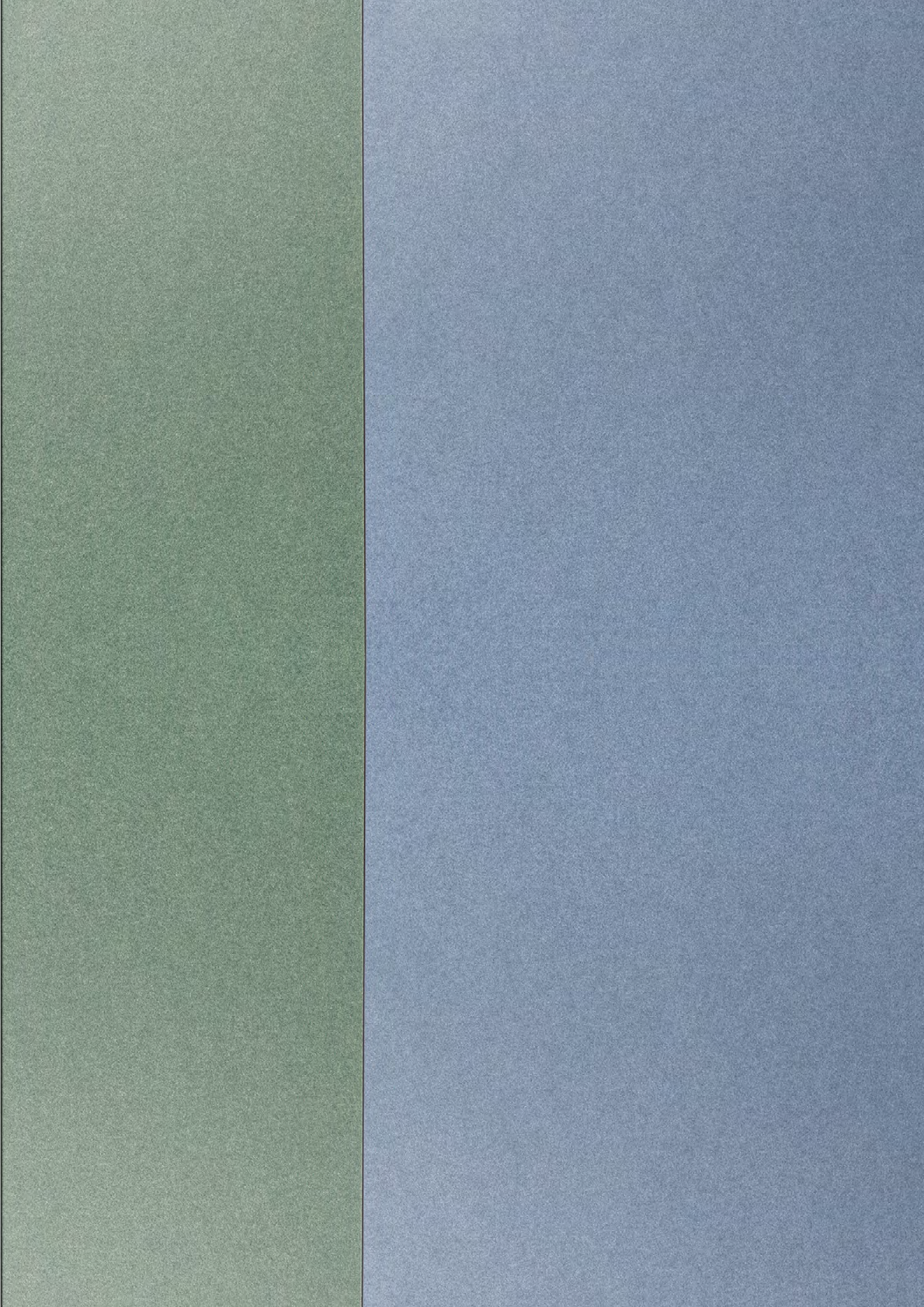
Technical data

Detailed information can be found in the DIM –
“Design and Installation Manual Largo”.

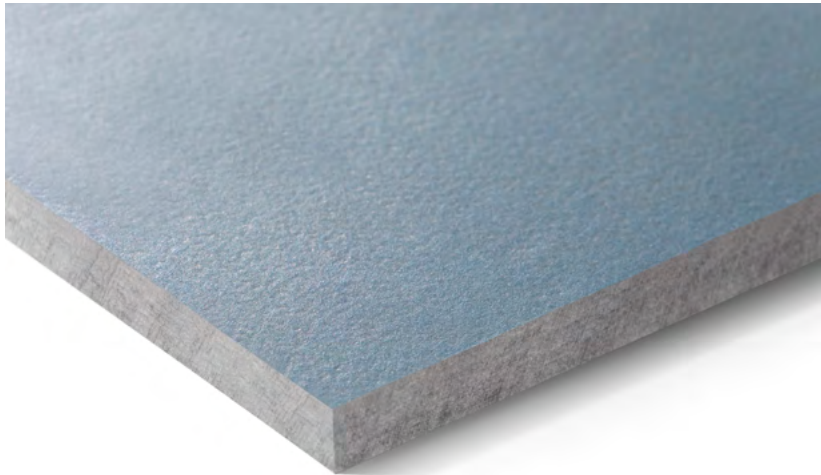


NOBILIS

Natural elegance through authenticity.
The translucent, slightly pigmented
surface highlights the fibre cement texture
in all its natural beauty and elegance.



NOBILIS



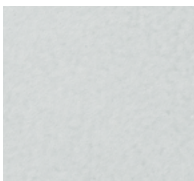
Nobilis is a grey panel with a translucent, lightly pigmented surface that highlights the fibre cement texture in all its natural beauty and elegance.

The colour family combines 13 shades of brown, blue, green and grey, both warmer and cooler hints of grey. The sophisticated shades of Nobilis create an effortless aesthetic and elegant lightness.

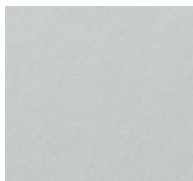
As a naturally dried and lightly pigmented fibre cement panel, Nobilis is restrained and precisely because of this becomes an aesthetic eye-catcher. Whether deliberate combinations of soft grey tones or expressiveness through unity – Nobilis lends simple elegance to facades and interiors.



House XL, Pot na Črnile, Slovenia. Architect: SONO Arhitekti, Lokavec, Slovenia. Photographer: Meraner & Hauser OHG / SNC, Bozen, Italy.



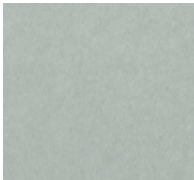
Crystal 124



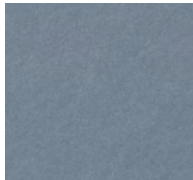
Crystal 122



Crystal 123



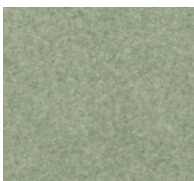
Crystal 125



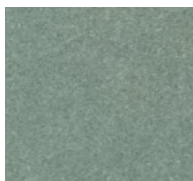
Azurite 421



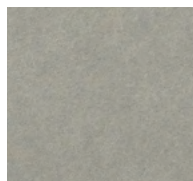
Azurite 422



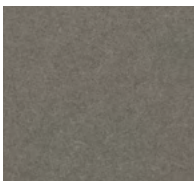
Jade 521



Jade 522



Granite 624



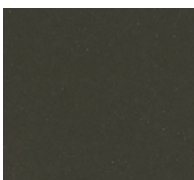
Granite 622



Amber 721



Amber 723



Anthracite 221

Technical data

Panels

The panel is grey based.

Coating: Translucent lightly pigmented

Panel format

Swisspearl Largo:

Maximum usable format 3050 x 1250 mm,
panel thickness 8 mm; 12 mm panels
only available in the format 2510 x 1250 mm

For a detailed summary of the sizing and colour
options, please refer to our delivery program.

Colours

13 standard colours.

Special coating Nobilis HR (optional)

Nobilis HR is a special transparent coating
that has a high scratch resistance and offers
protection against heavy soiling and graffiti.
Nobilis HR is available in all Nobilis standard
colours.

Mounting

Visible on wooden substructure:

Screws with painted heads

Visible on metal substructure:

Blind rivets with painted heads

Invisible on metal substructure:

Undercut anchors

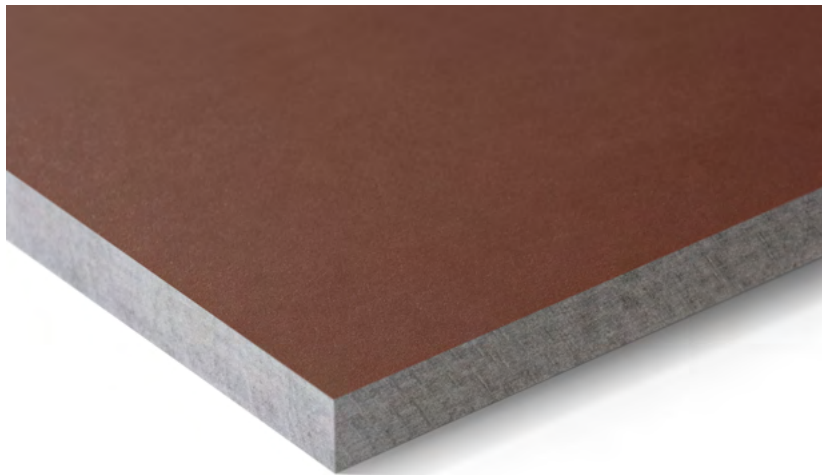
Technical data

Detailed information can be found in
the DIM – "Design and Installation
Manual Largo".

TERRA

Earthy, warm atmosphere.
The finely coordinated colours
are reminiscent of earthy
tones and give the building
shell an earthy, natural look.

TERRA

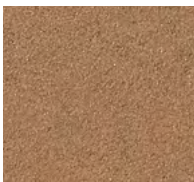


Terra is a naturally dried grey fibre cement panel with a translucent, strongly pigmented surface. The name Terra represents the epitome of the character for the earthy warm tones.

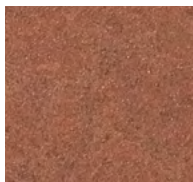
Without noticeably large colour gradations, Terra manages to go from a light to a very dark brown with 6 tones, while preserving the harmony of the colour family. The finely balanced colours are reminiscent of earth tones and give the building envelope an earthy, natural look. Terra allows buildings to merge with their natural surroundings, giving them an approachable warmth and comfort without losing their strength and expressiveness.



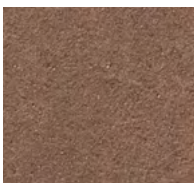
Inspiration atelier 522.



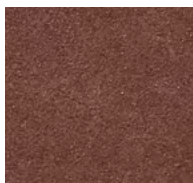
Amber 751



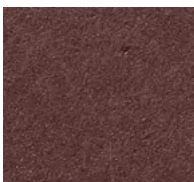
Amber 752



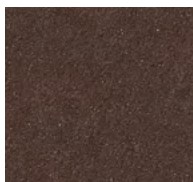
Amber 753



Amber 754



Amber 755



Amber 756

Technical data

Panels

The panel is grey based.

Coating: Translucent strongly pigmented

Panel format

Swisspearl Largo:

Maximum usable format 3050 x 1250 mm,
panel thickness 8 mm; 12 mm panels
only available in the format 2510 x 1250 mm

For a detailed summary of the sizing and colour
options, please refer to our delivery program.

Colours

6 standard colours.

Mounting

Visible on wooden substructure:

Screws with painted heads

Visible on metal substructure:

Blind rivets with painted heads

Invisible on metal substructure:

Undercut anchors

Technical data

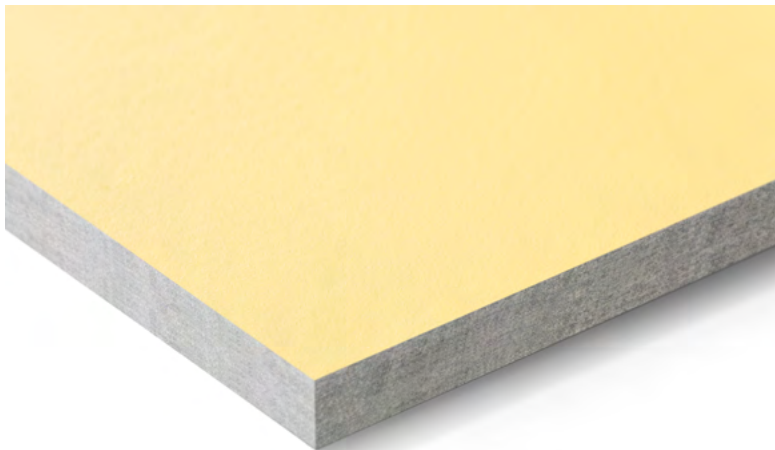
Detailed information can be found in
the DIM – “Design and Installation
Manual Largo”.



PLANEA

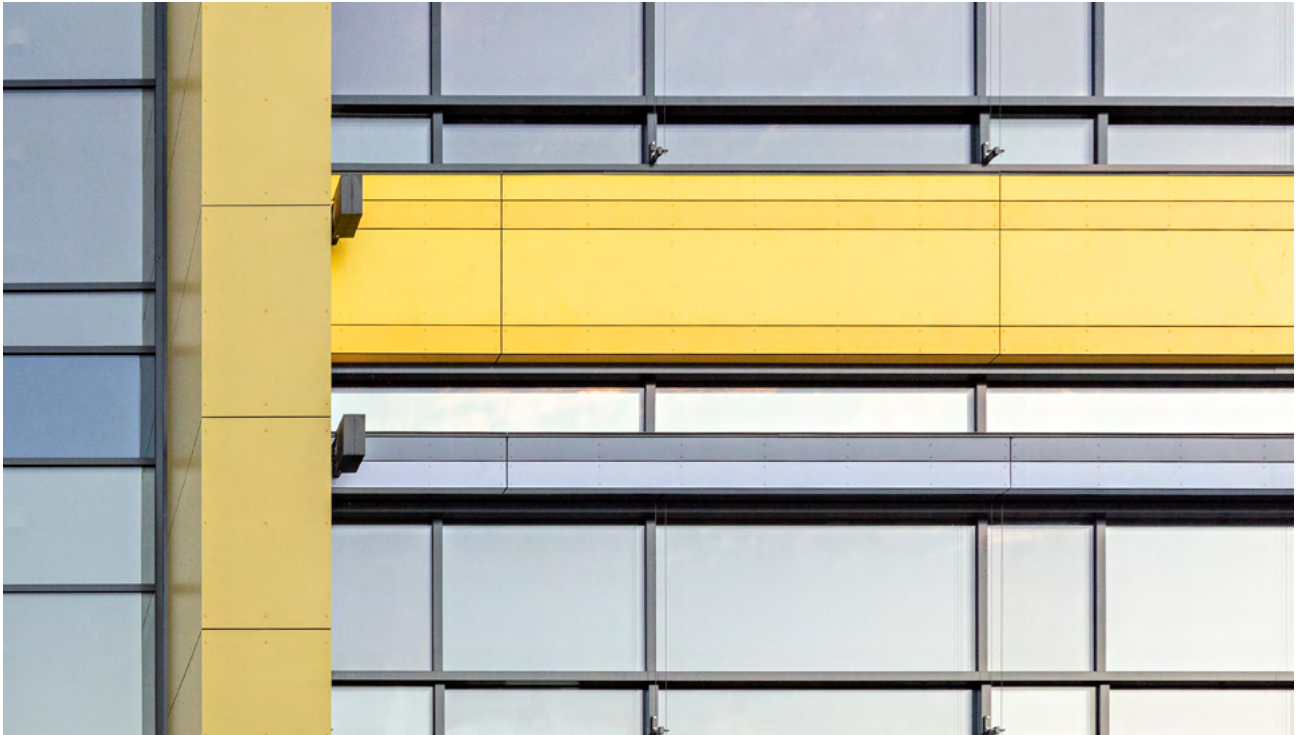
Fresh, colourful creativity. The matt, smooth surface emphasises the clear, light and intense colours and thus creates a particularly expressive effect.

PLANE A

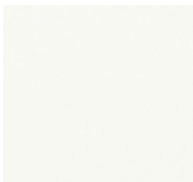


Planea is a naturally dried grey fibre cement panel with an opaque, strong surface coating. Strong, vibrant and particularly colour-intensive are also the shades of the colour family, which is composed of two sunny yellows, two refreshing greens and four pastel to dark reds. Fine gradations of white and light grey and a strong shade of black form an exciting addition to the colour palette and allow for strong contrasts or gentle accentuation.

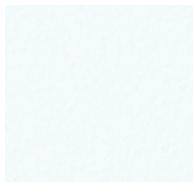
The matt, smooth surface highlights the clear and intense colours, making them particularly expressive. Planea can be used to create a colour-intensive building envelope that brings a bright contrast to the surroundings.



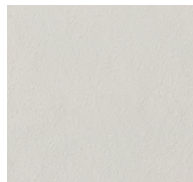
Bergi Music and Art Primary School, Garkalnes Novads, Latvia. Architect: Ozola & Bula, Riga, Latvia. Photographer: Meraner & Hauser OHG/SNC, Bolzano, Italy.



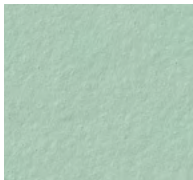
Snowflake 930



Igloo 932



Skylight 131



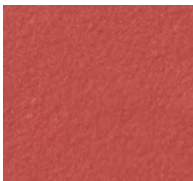
Cactus 531



Jungle 532



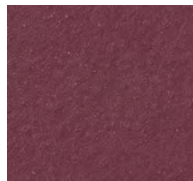
Midnight 231



Dragon 332



Crimson 333



Ruby 334



Sunrise 831



Sunset 832

Technical data

Panels

The panel is grey based.

Coating: Opaque

Panel format

Swisspearl Largo:

Maximum usable format 3050 x 1250 mm,
panel thickness 8 mm and 12 mm.

For a detailed summary of the sizing
and colour options, please refer to
our delivery program.

Colours

11 standard colours.

Special colours available on request.

Mounting

Visible on wooden substructure:

Screws with painted heads

Visible on metal substructure:

Blind rivets with painted heads

Invisible on metal substructure:

Undercut anchors

Technical data

Detailed information can be found in
the DIM – "Design and Installation
Manual Largo".

ZENOR

Simple elegance.

The selected range offers
cost-effective yet high-
quality implementation.



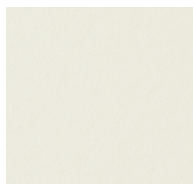
ZENOR



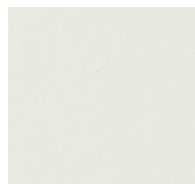
Zenor is a large-format fibre cement panel with an opaque coating. The selected colour range offers cost-effective yet high-quality implementation from production to assembly. All-round protection for building shells with simple elegance.



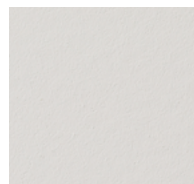
AHS Wien West, Vienna, Austria. Architect: Shibukawa Eder Architects / FP Architekten, Vienna, Austria. Photographer: Kurt Kuball, Vienna, Austria.



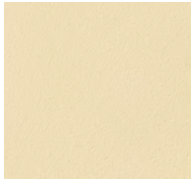
11115



11006



15015



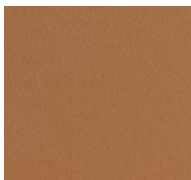
23057



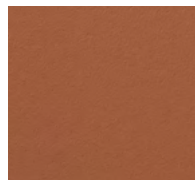
65061



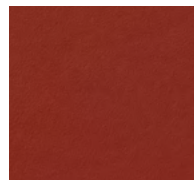
67007



35154



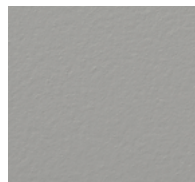
33106



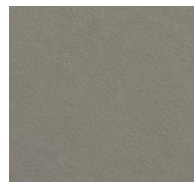
35005



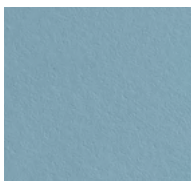
51101



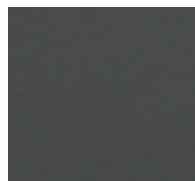
65126



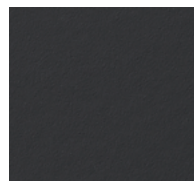
63077



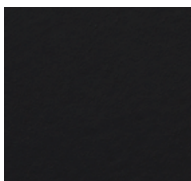
41055



69055



67014



67159

Technical data

Panels

The panel is coloured through in a similar shade to the surface.
Coating: Opaque

Panel format

Swisspearl Largo:

Maximum usable format 3050 x 1250 mm,
panel thickness 8 mm.

For a detailed summary of the sizing and colour options, please refer to our delivery program.

Colours

16 standard colours.

Special coating Zenor HR (optional)

Zenor HR (high-resistance) is a special transparent coating that has a high scratch resistance and offers protection against heavy soiling and graffiti. Zenor HR is available in all Zenor standard colours.

Mounting

Visible on wooden substructure:

Screws with painted heads

Visible on metal substructure:

Blind rivets with painted heads

Invisible on metal substructure:

Undercut anchors

Technical data

Detailed information can be found in the DIM – “Design and Installation Manual Largo”.



[swisspearl.com](https://www.swisspearl.com)



(888)826-8453 | [claddingcorp.com](https://www.claddingcorp.com)